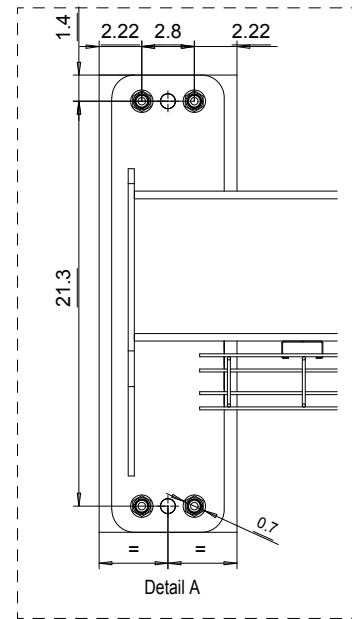
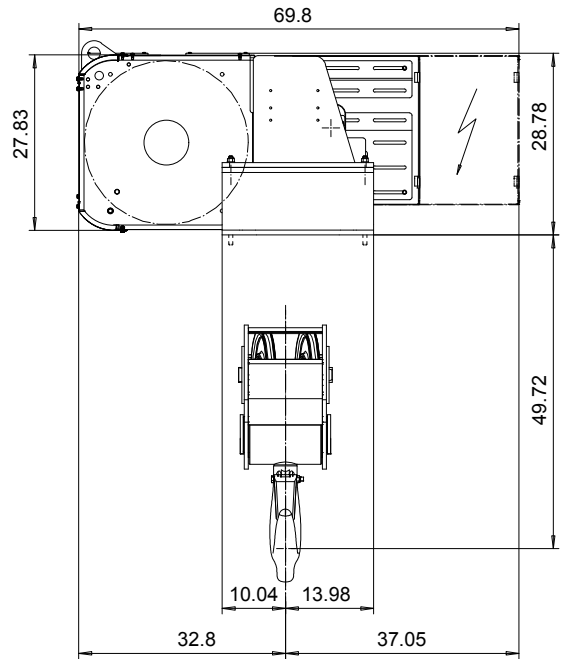
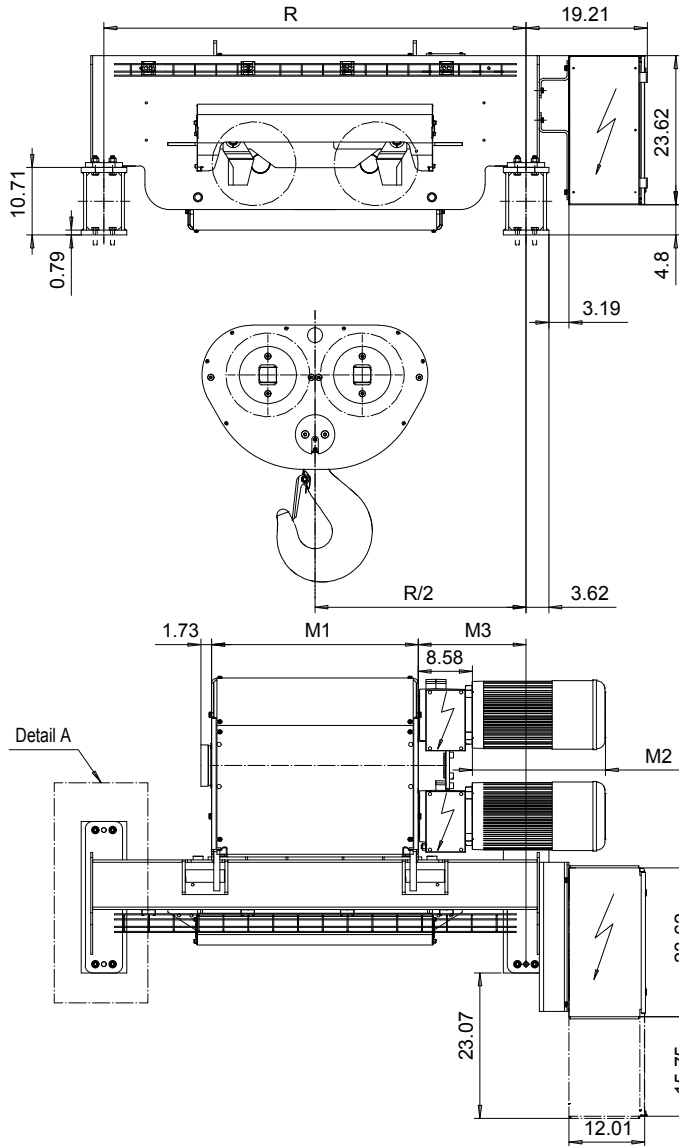


FOOT MOUNT, 4 PART DOUBLE
Hoist type:
SX7 042...F0

US-60Hz



Load (TON)	Class ASME	Hoisting motor				
		Hoisting speed (ft/min): Gear code				
		15.7/2.3: E	19.7/3: F	24.6/4: G	31.5: H	39.2: J
25	H4+	P6,T6	P6,T6	P7,T7	T8	T9
30	H4	P6,T6	P6,T6	P7,T7	T8	T9
40	H3	P6,T6	P7,T7	T8	T9	-

HOL (ft)	Length code	M1 (inch)	M3 (inch)	R (inch)	Weight (lb)
24'-6"	F	32.75	17.1	66.9	3308
32'-9"	G	40.23	13.3	66.9	3308
44'-3"	H	50.07	22.2	94.5	3749
60'-8"	J	63.85	15.3	94.5	3969
75'-5"	K	75.66	13.3	122	4631
90'-2"	L	89.44	16.3	122	4851
101'-8"	M	99.29	33.1	149.6	5513
116'-5"	N	111.10	27.2	149.6	5733

Motor	P6,T6,T7,T8	P7	T9
M2 (inch)	21.10	22.67	21.1
Wgt (lb)	187	232	203

Hoist weight calculated with P6 motor weight.

This document is the absolute property of R&M Materials Handling, Inc. This document must not be copied without the written permission of R&M Materials Handling, Inc. The contents thereof must not be disclosed to a third party nor be used for any unauthorized purpose. Contravention will be prosecuted.

ETTPAL Design	ETTPAL Chd	Appd	Ref Drawing	QE-F-24
2003-01-13 Date	HOIST; FIXED			
SLEDDOCV Owner Dept	2x4 ROPE FALLS			
R&M MATERIALS HANDLING INC.	R&M MATERIALS HANDLING INC.	HOIST & CRANE PRODUCTS	SPRINGFIELD, OHIO	D006945-A
				1:13 Folder
				Issue 1/2011