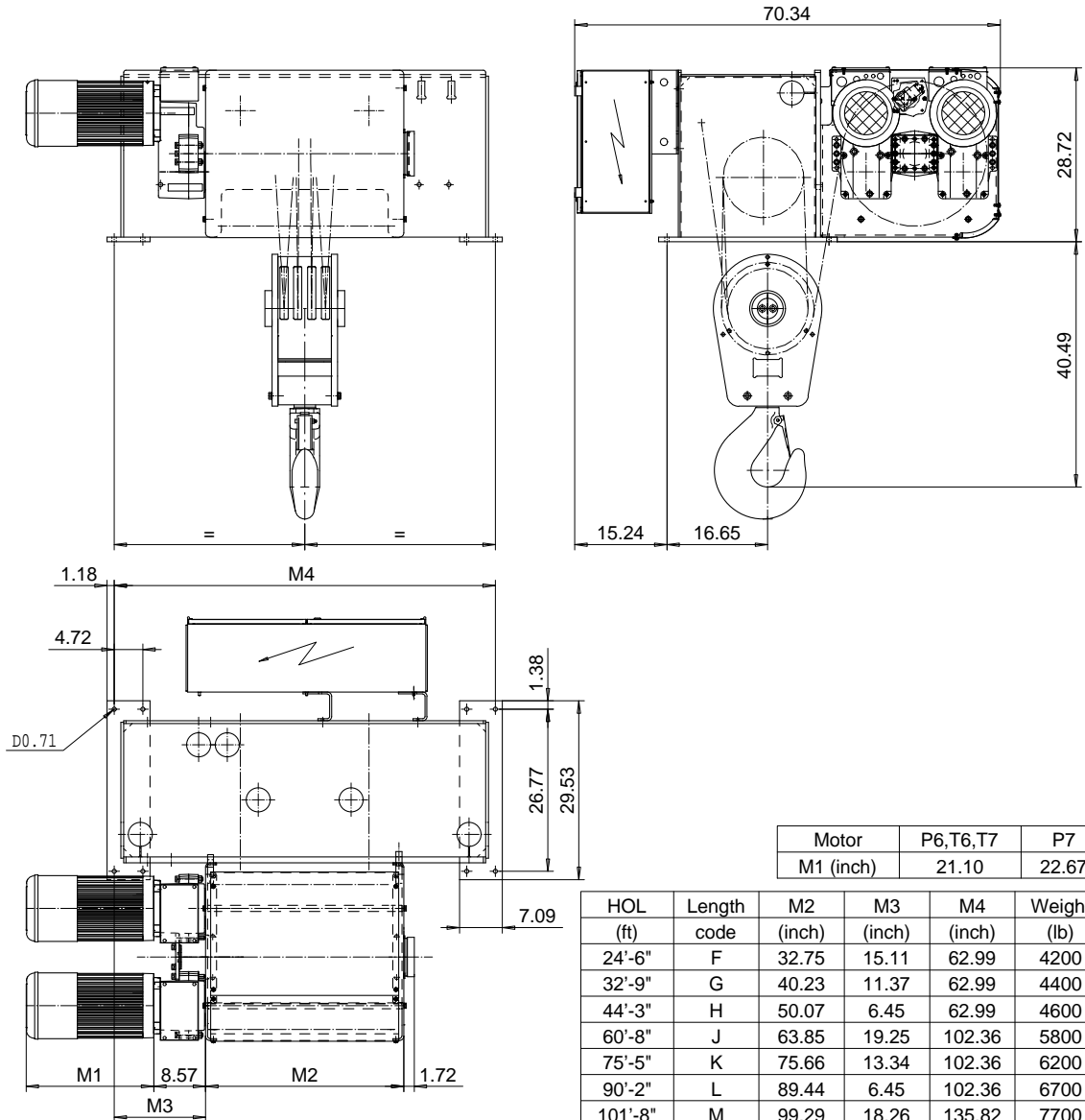


**FOOT MOUNT, 4 PART DOUBLE**  
**Hoist type:**  
**SX7 042...F0**

**US-60Hz**



Motor	P6,T6,T7	P7
M1 (inch)	21.10	22.67

HOL (ft)	Length code	M2 (inch)	M3 (inch)	M4 (inch)	Weight (lb)
24'-6"	F	32.75	15.11	62.99	4200
32'-9"	G	40.23	11.37	62.99	4400
44'-3"	H	50.07	6.45	62.99	4600
60'-8"	J	63.85	19.25	102.36	5800
75'-5"	K	75.66	13.34	102.36	6200
90'-2"	L	89.44	6.45	102.36	6700
101'-8"	M	99.29	18.26	135.82	7700
116'-5"	N	111.10	12.36	135.82	8100

Load (TON)	Class ASME	Hoisting motor				
		Hoisting speed (ft/min): Gear code				
		15.7/2.3: E	19.7/3: F	24.6/4: G	31.5: H	39.2: J
25	H4+	P6,T6	P6,T6	P7,T7	T8	T9
30	H4	P6,T6	P6,T6	P7,T7	T8	T9
40	H3	P6,T6	P7,T7	T8	T9	-

This document is the absolute property of R&M Materials Handling, Inc. This document must not be copied without the written permission of R&M Materials Handling, Inc. The contents thereof must not be disclosed to a third party nor be used for any unauthorized purpose. Contravention will be prosecuted.

ETFPAL Design 2003-01-13 Date	ETFPAL Chd Appd	Ref Drawing	QE-F-24
SLEQDOCV Owner Dept	HOIST; FIXED 2x4 ROPE FALLS		1 of 13 Folder
R&M MATERIALS HANDLING, INC. HOIST & CRANE PRODUCTS SHELBYVILLE, KY	D002333-A		Issue 6