

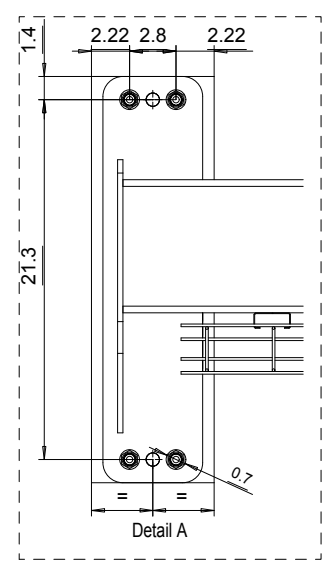
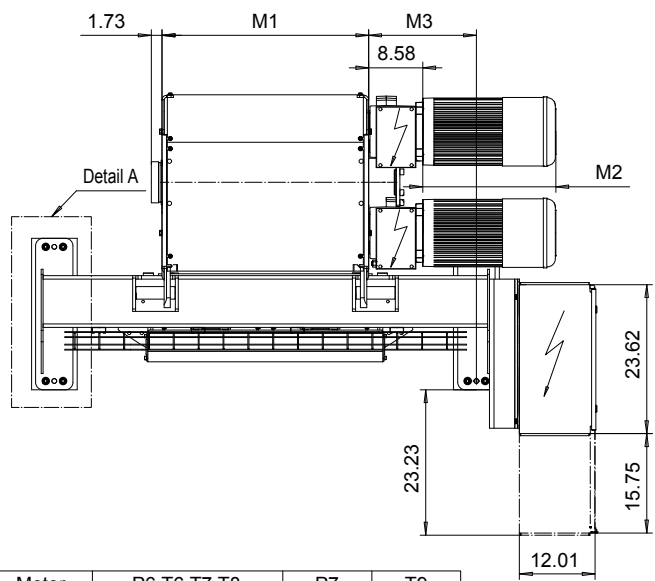
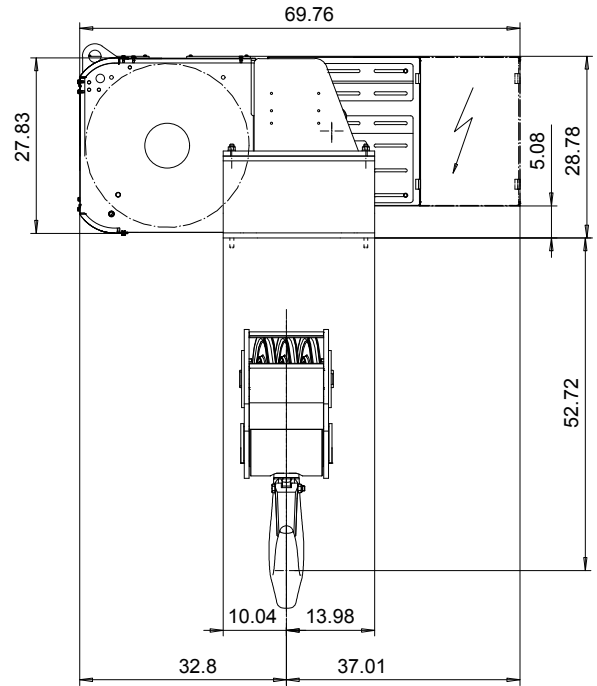
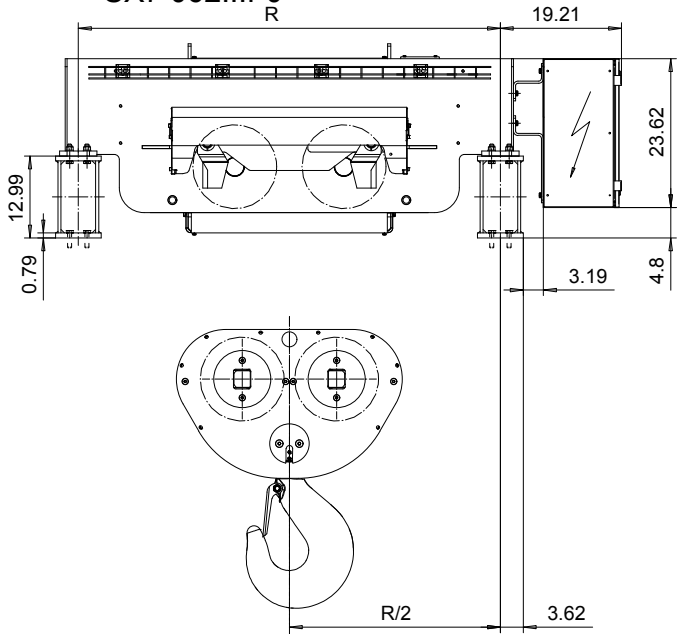
# FOOT MOUNT, 6 PART DOUBLE

Hoist type:

SX7 062...F0

R

US-60Hz



Motor	P6,T6,T7,T8	P7	T9
M2 (inch)	21.10	22.67	21.1
Wgt (lb)	187	232	203

HOL (ft)	Length code	M1 (inch)	M3 (inch)	R (inch)	Weight (lb)
16'-4"	F	32.75	17.1	66.9	3528
21'-3"	G	40.23	13.3	66.9	3749
29'-6"	H	50.07	22.2	94.5	4190
41'-0"	J	63.85	15.3	94.5	4410
49'-2"	K	75.66	13.3	122	5292
60'-8"	L	89.44	16.3	122	5733
67'-6"	M	99.29	33.1	149.6	6615
77'-1"	N	111.10	27.2	149.6	6836

Load (TON)	Class ASME	Hoisting speed (ft/min): Gear code				
		10/1.6: E	12.5/1.9: F	16/2.3: G	20: H	25: J
40	H4+	P6,T6	P6,T6	P7,T7	T8	T9
50	H4	P6,T6	P6,T6	P7,T7	T8	T9
60	H3	P6,T6	P7,T7	T8	T9	-

Hoist weight calculated with P6 motor weight.

This document is the absolute property of R&M Materials Handling, Inc. This document must not be copied without the written permission of R&M Materials Handling, Inc. The contents thereof must not be disclosed to a third party nor be used for any unauthorized purpose. Contravention will be prosecuted.

ETTPAL Design	ETTPAL Chd	Appd	Ref Drawing	QE-F-26
2003-01-13	HOIST; FIXED			
SLEDDOCV	2X6 ROPE FALLS			
R&M MATERIALS HANDLING INC.	D006946-A			
1/2011	1/13			