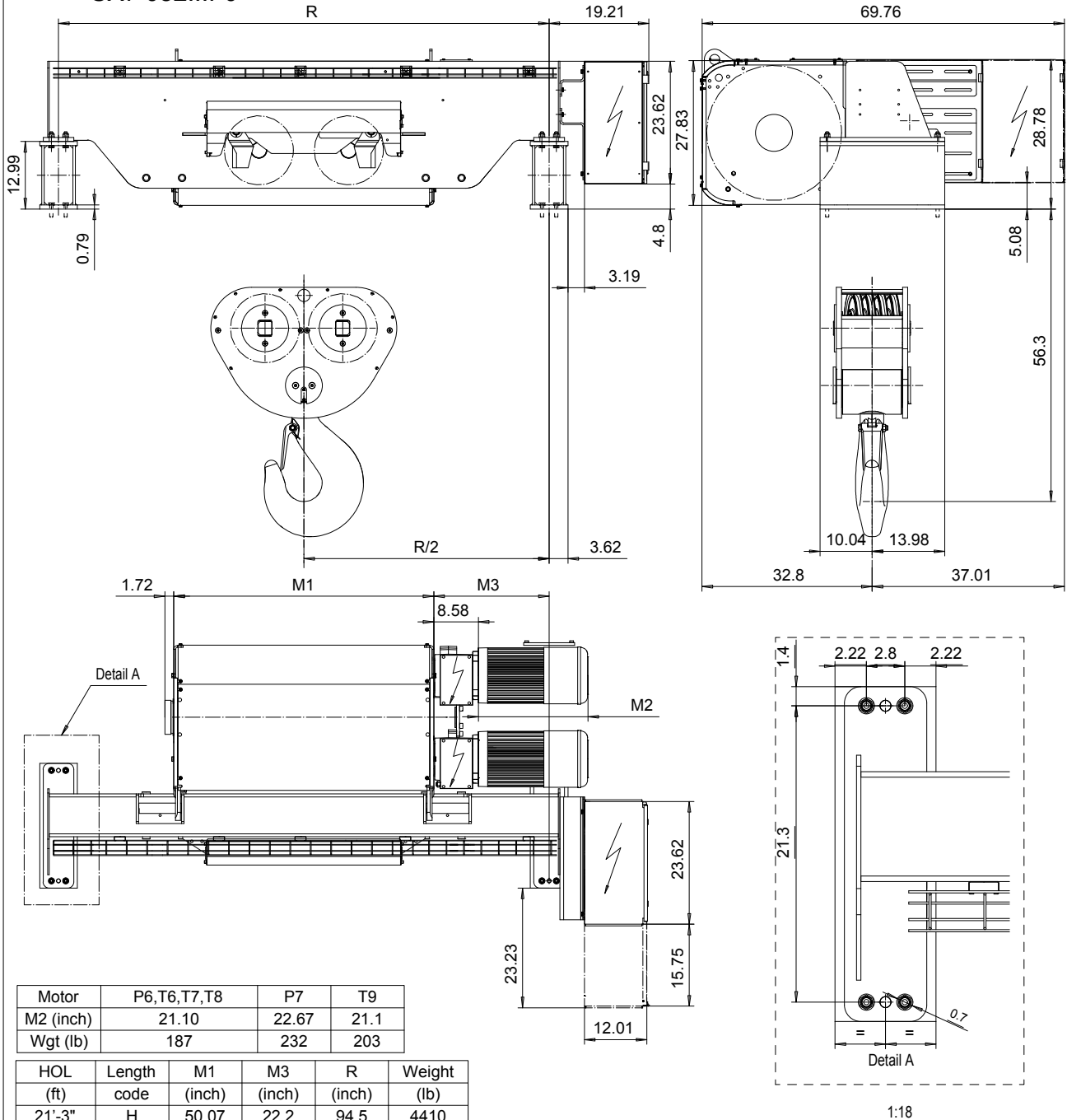


# FOOT MOUNT, 8 PART DOUBLE

Hoist type:  
SX7 082...F0

US-60Hz



Motor	P6,T6,T7,T8	P7	T9
M2 (inch)	21.10	22.67	21.1
Wgt (lb)	187	232	203

HOL (ft)	Length code	M1 (inch)	M3 (inch)	R (inch)	Weight (lb)
21'-3"	H	50.07	22.2	94.5	4410
29'-6"	J	63.85	15.3	94.5	4851
36'-1"	K	75.66	13.3	122	5733
44'-3"	L	89.44	16.3	122	5954
50'-10"	M	99.29	33.1	149.6	6836
57'-4"	N	111.10	27.2	149.6	7056

Load (TON)	Class ASME	Hoisting motor					
		Hoisting speed (ft/min): Gear code					
		8/1.2: E	10/1.6: F	12.8/2: G	16: H	20: J	
60	H4	P6,T6	P6,T6	P7,T7	T8	T9	
75	H3	P6,T6	P7,T7	T8	T9	-	

Hoist weight calculated with P6 motor weight.

This document is the absolute property of R&M Materials Handling, Inc. This document must not be copied without the written permission of R&M Materials Handling, Inc. The contents thereof must not be disclosed to a third party nor be used for any unauthorized purpose. Contravention will be prosecuted.

ETTPAL Design 2003-01-13 Date	ETTPAL Chd	Appd	Ref Drawing	QE-F-28
SLEODOCV Owner Dept	HOIST; FIXED 2X8 ROPE FALLS			1:13 Folder
R&M MATERIALS HANDLING INC.	R&M MATERIALS HANDLING INC. HOIST & CRANE PRODUCTS SPRINGFIELD, OHIO	D006947-A		Issue 1/2011