

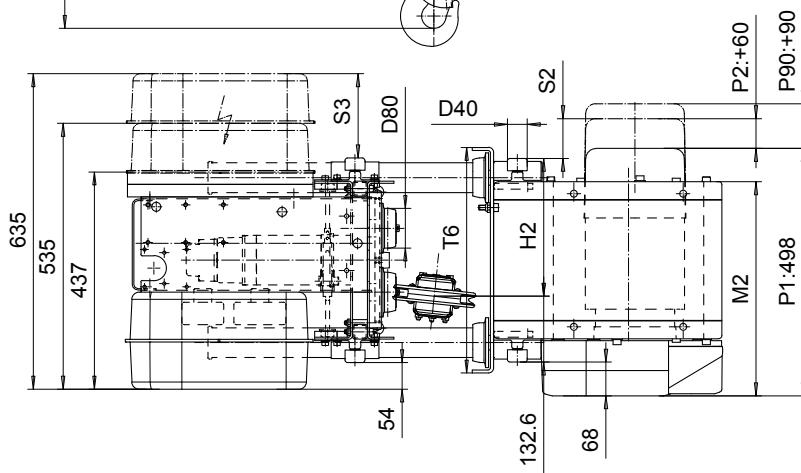
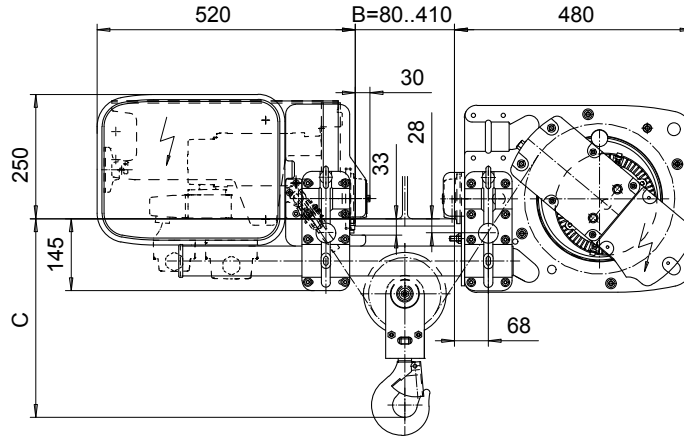
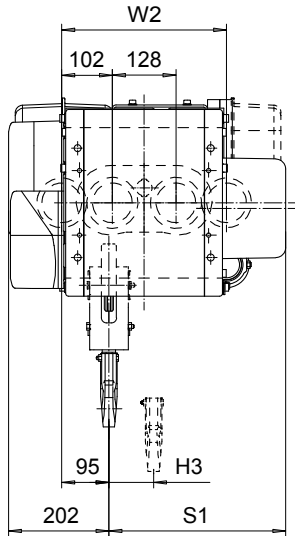
LOW HEADROOM, 2 PART SINGLE

Hoist type:

SI-50Hz

SX2 021..L0

SX3 021..L0



HEADROOM TABLE	
Flange Width, B (mm)	Headroom, C (mm)
80 - 270	400
271 - 320	430
321 - 370	460
371 - 410	485

Headroom is related to the flange width

Load (kg)	Class Fem/ISO	Hoisting speed (m/min)			
		Gear+Motor code:			
		F+P1	F+P2	G+P2	H+P3
800	3m/M6	10/1.7	10/1.7	12.5/2.1	16/2.7
1000	2m/M5	10/1.7	10/1.7	12.5/2.1	16/2.7
1250	3m/M6	-	10/1.7	12.5/2.1	16/2.7
1600	2m/M5	-	10/1.7	12.5/2.1	16/2.7
+weight (kg):		-	10	10	13

HOL	Length	M2	H2	H3	S1(mm)			S2(mm)			S3	T6	W2	Weight
(m)	code	(mm)	(mm)	(mm)	P1	P2	P3	P1	P2	P3	(mm)	(mm)	(mm)	(kg)
12	A	431	276	90	298	356	386	22	80	110	170	454	332	175
19	C	561	406	144	359	359	386	83	83	110	66	584	462	195

Note: S1,S2 are the dimensions to the outermost part in each case, without the second control enclosure

This document is the absolute property of R&M Materials Handling, Inc. This document must not be copied without the written permission of R&M Materials Handling, Inc. The contents thereof must not be disclosed to a third party nor be used for any unauthorized purpose. Contravention will be prosecuted.

Design	Chg	Appd	Ref Drawing	QA-L-02
Date	TROLLEY; LOW HEADROOM			
SLE/ME/CE	2 ROPE FALLS			
Drawn	D002075-A			
Sheet	4			