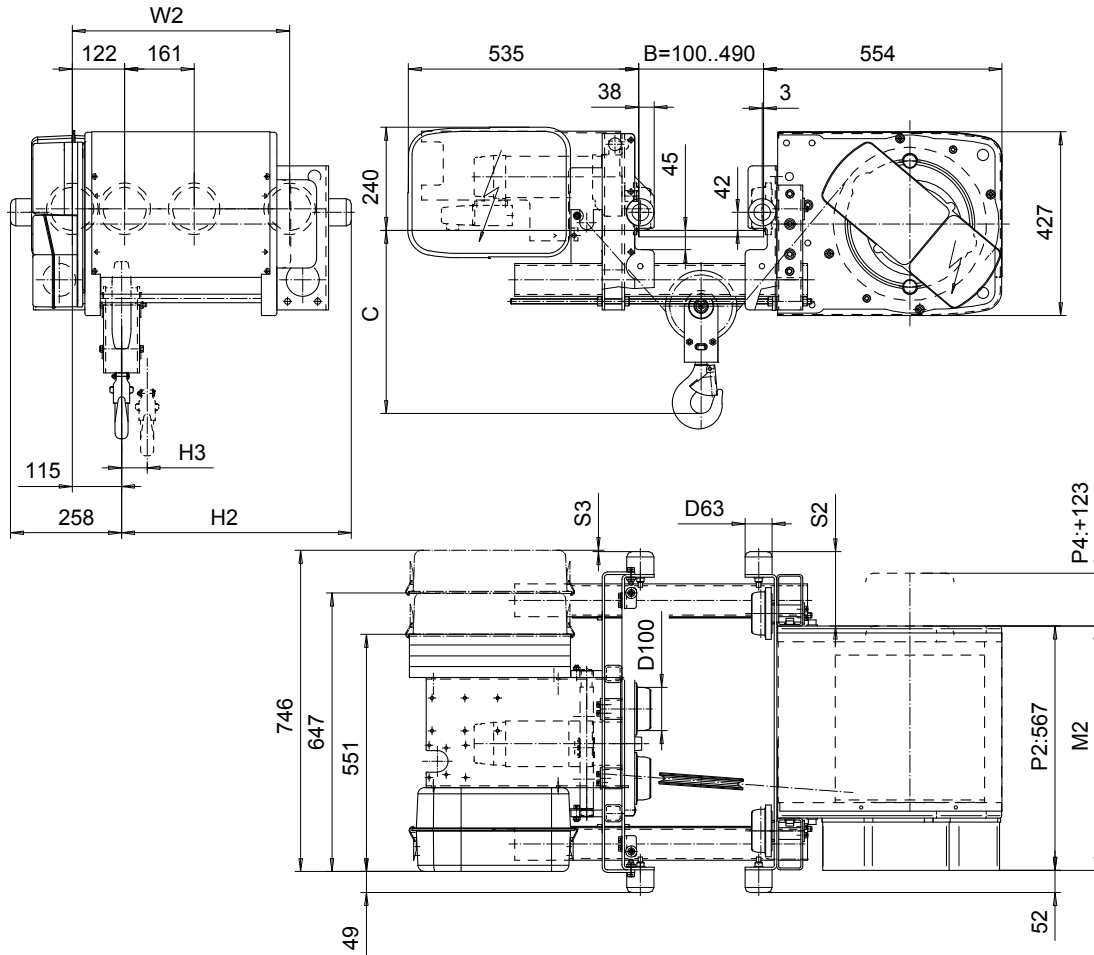


LOW HEADROOM, 2 PART SINGLE (A2), SPECIAL
Hoist type:
SX4 021 (A2)...L0

SI-50Hz



Flange Width, B (mm)	Headroom, C (mm)
100 - 250	410
251 - 300	440
301 - 350	475
351 - 400	505
401 - 450	540
451 - 490	570

Headroom is related to the flange width

Load (kg)	Class Fem/ISO	Hoisting speed (m/min)		
		Gear+Motor code:		
		E+P2	F+P2	H+P4
1000	3m/M6	8/1.3	10/1.7	16/2.7
1250	3m/M6	8/1.3	10/1.7	16/2.7
1600	2m/M5	8/1.3	10/1.7	16/2.7
+ weight (kg):		-	-	40

HOL	Length	M2	H2	H3	S2	S3	W2	Weight
(m)	code	(mm)	(mm)	(mm)	(mm)	(mm)	(mm)	(kg)
22.5	C	567	534	144	173	3	505	320
30	D	667	634	193	273	-97	605	340

This document is the absolute property of R&M Materials Handling, Inc. This document must not be copied without the written permission of R&M Materials Handling, Inc. The contents thereof must not be disclosed to a third party nor be used for any unauthorized purpose. Contravention will be prosecuted.

CSDPAL Design	CSDPAL Title	Appd.	Ref. Drawing	QB-L-A2
2002-08-28 Date	TROLLEY; LOW HEADROOM			 1:1-7.5 Position
SLEQRNG1 Drawn/Dept	2 ROPE FALLS, 1600 kg			
 R&M MATERIALS HANDLING, INC. 1001 S. 10TH AVENUE CHICAGO, IL 60606	D002106-A			Drawn 3