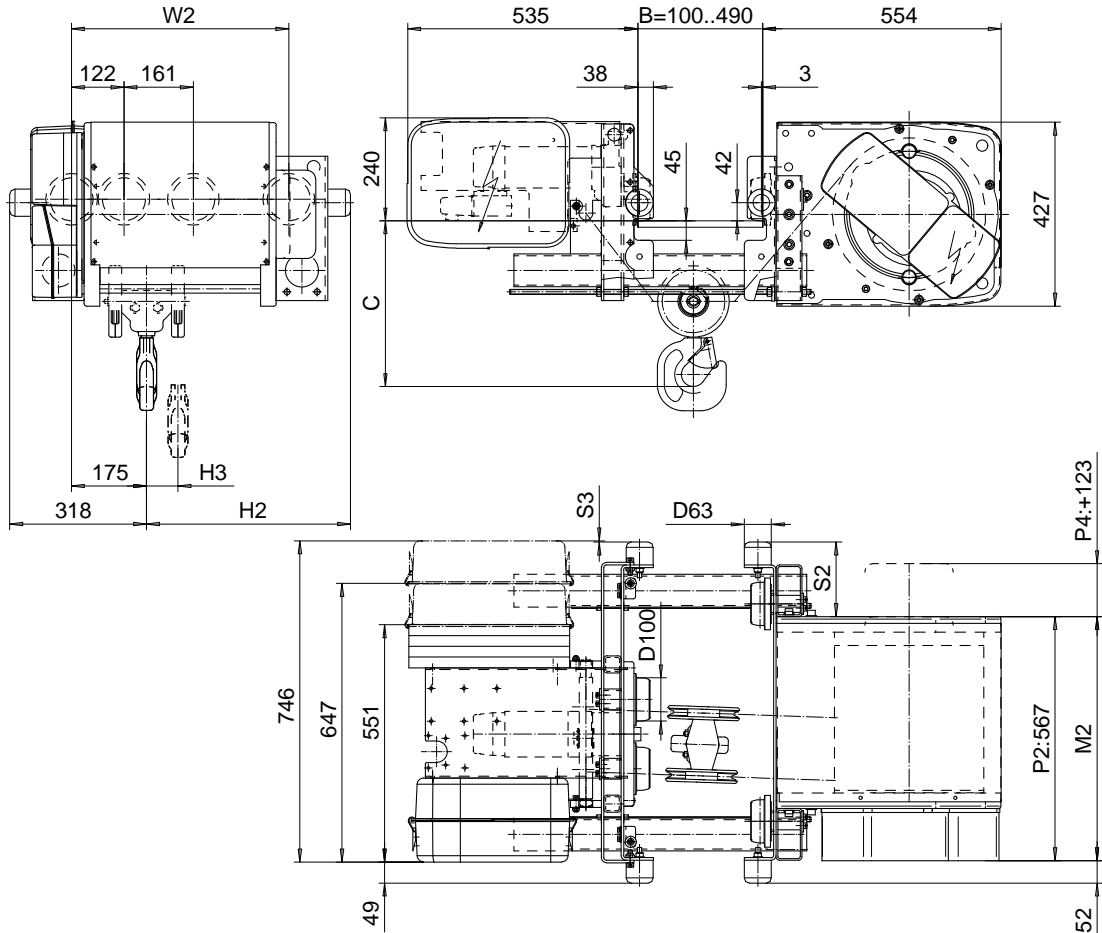


# LOW HEADROOM, 4 PART SINGLE (A4), SPECIAL

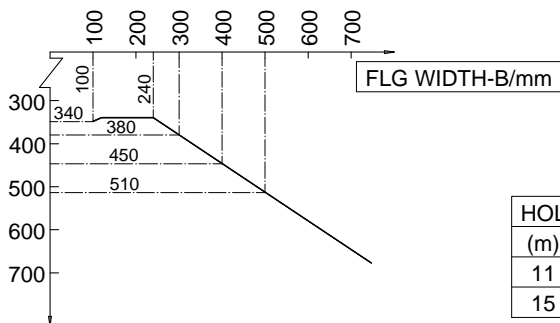
Hoist type:

SX4 041 (A4)...L0

SI-50Hz



## HEADROOM CHART



| Load (kg)      | Class Fem/ISO | Hoisting speed (m/min) |       |       |
|----------------|---------------|------------------------|-------|-------|
|                |               | Gear+Motor code:       |       |       |
|                |               | E+P2                   | F+P2  | H+P4  |
| 2000           | 3m/M6         | 4/0.7                  | 5/0.8 | 8/1.3 |
| 2500           | 3m/M6         | 4/0.7                  | 5/0.8 | 8/1.3 |
| 3200           | 2m/M5         | 4/0.7                  | 5/0.8 | 8/1.3 |
| + weight (kg): |               | -                      | -     | 40    |

| HOL (m) | Length code | M2 (mm) | H2 (mm) | H3 (mm) | S2 (mm) | S3 (mm) | W2 (mm) | Weight (kg) |
|---------|-------------|---------|---------|---------|---------|---------|---------|-------------|
| 11      | C           | 567     | 474     | 73      | 173     | 3       | 505     | 335         |
| 15      | D           | 667     | 574     | 99      | 273     | -97     | 605     | 355         |

HEADROOM-C/mm

This document is the absolute property of R&M Materials Handling, Inc. This document must not be copied without the written permission of R&M Materials Handling, Inc. The contents thereof must not be disclosed to a third party nor be used for any unauthorized purpose. Contravention will be prosecuted.

|   |                       |      |             |                       |
|---|-----------------------|------|-------------|-----------------------|
| CSDPAL<br>Design  | CSDPAL<br>Title       | Appd | Ref Drawing | QB-L-A4               |
| 2002-08-28<br>Date  | TROLLEY; LOW HEADROOM |      |             | 1:1, 7:5<br>Pictorial |
| SLEPQEN01<br>Owner Dept   | 4 ROPE FALLS, 3200 kg |      |             |                       |
| R&M<br>MATERIALS HANDLING, INC.<br>EQUIPMENT DIVISION<br>SHEPHERD, PA | D002107-A             |      |             | Drawn<br>3            |