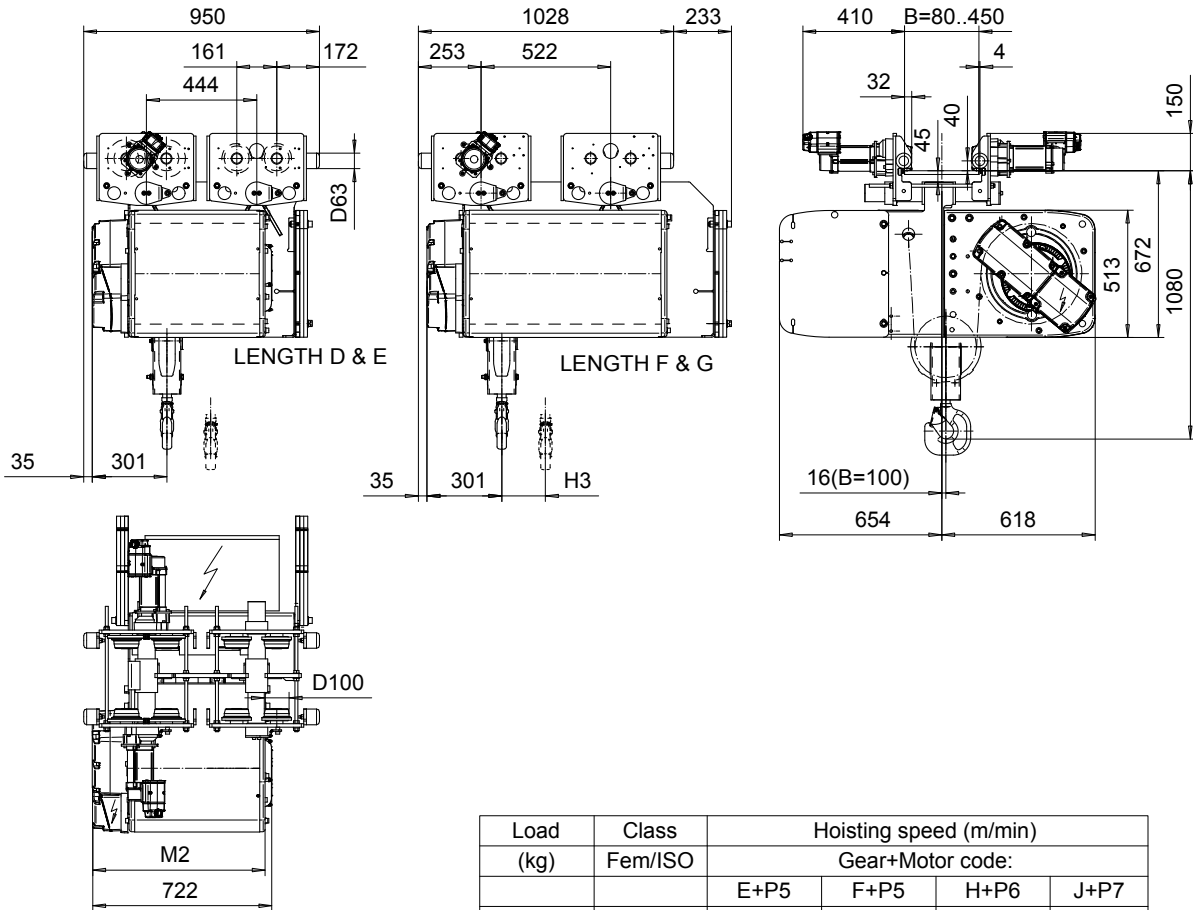


NORMAL HEADROOM, 2 PART SINGLE

Hoist type:
SX5 021...N0

SI-50Hz



Load (kg)	Class Fem/ISO	Hoisting speed (m/min)			
		Gear+Motor code:			
		E+P5	F+P5	H+P6	J+P7
4000	3m/M6	8/1.3	10/1.7	16/2.7	20/3.3
5000	2m/M5	8/1.3	10/1.7	16/2.7	20/3.3
+ weight (kg):		-	-	60	80

HOL (m)	Length code	M2 (mm)	H3 (mm)	Weight (kg)
18	D	697	176	555
24	E	817	235	605
32	F	967	309	660
40	G	1157	403	710

This document is the absolute property of R&M Materials Handling, Inc. This document must not be copied without the written permission of R&M Materials Handling, Inc. The contents thereof must not be disclosed to a third party nor be used for any unauthorized purpose. Contravention will be prosecuted.

ETFPAL Design	ETFPAL Chd	Appd	Ref Drawing	QC-N-02
2002-08-29 Date	TROLLEY; NORMAL HEADROOM			1 of 15 Folder
SLEQDCV Owner Dept	2 ROPE FALLS			
R&M MATERIALS HANDLING, INC. HOIST & CRANE PRODUCTS SERRAVALLO, OHIO	D002114-A			Issue 3