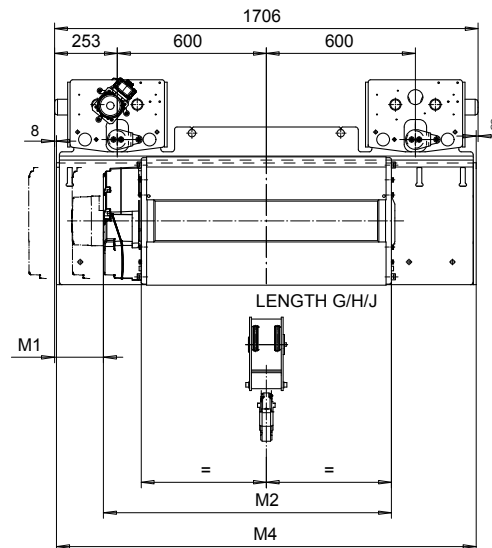
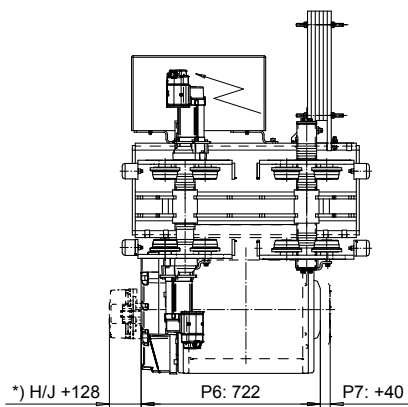
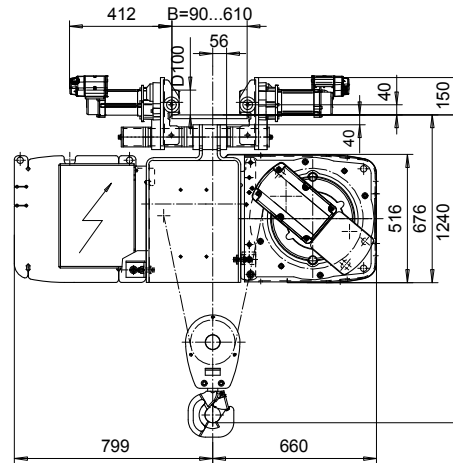
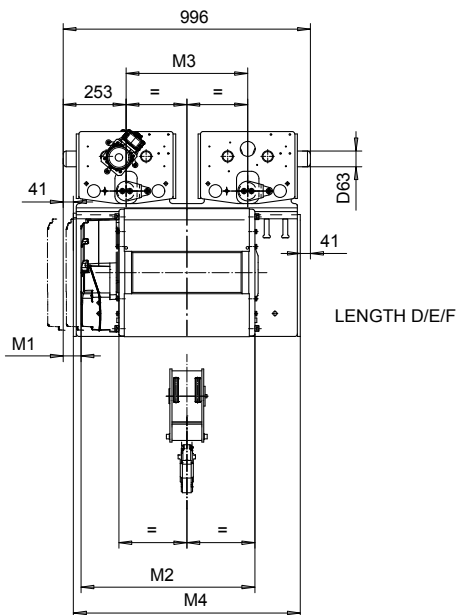


# NORMAL HEADROOM, 2 PART DOUBLE

Hoist type:

SX5022...N0

SI-50Hz



Load (kg)	Class Fem/ISO	Hoisting speed (m/min)			
		Gear+Motor code:			
		E+P5	F+P5	H+P6	J+P7
4000	3m/M6	8/1.3	10/1.7	16/2.7	20/3.3
5000	2m/M5	8/1.3	10/1.7	16/2.7	20/3.3
+ weight (kg):		-	-	60	80

HOL (m)	Length code	M1 (mm)	M2 (mm)	M3 (mm)	M4 (mm)	Weight (kg)
8.5	D	72	697	490	914	770
13	E	12	817	490	914	790
18	F	-63	967	490	914	810
25	G	197	1157	1200	1690	1030
33.5	H	72	1407	1200	1690	1070
46	J	-103	1757	1200	1690	1120

Note:  
Weight calculated with P5, when B=300 mm.

Note:  
\*) Gear brake as standard brake for drum lengths H and J

This document is the absolute property of R&M Materials Handling, Inc. This document must not be copied without the written permission of R&M Materials Handling, Inc. The contents thereof must not be disclosed to a third party nor be used for any unauthorized purpose. Contravention will be prosecuted.

ETVPH Design	ETVPH Chd	Appd	Ref Drawing	QC-N-22
2004-04-27			TROLLEY; NORMAL HEADROOM	
SLEQDCV			2x2 ROPE FALLS	
R&M				
			D003134-A	
				3