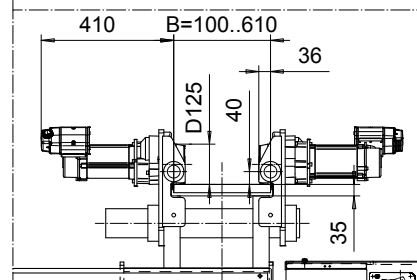
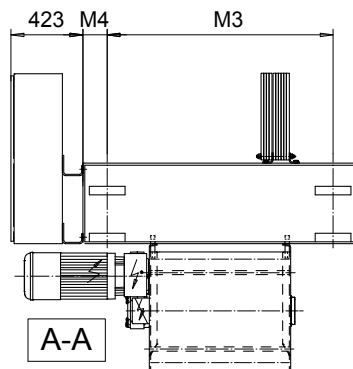
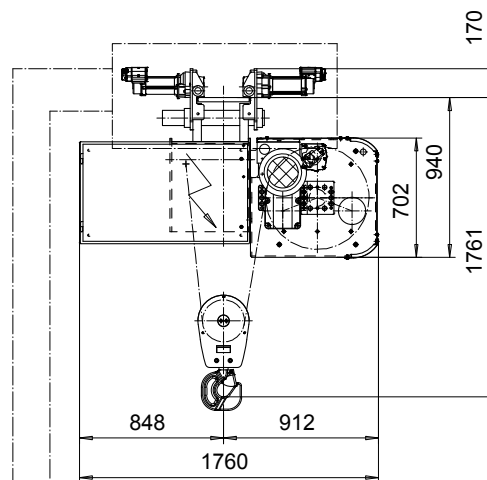
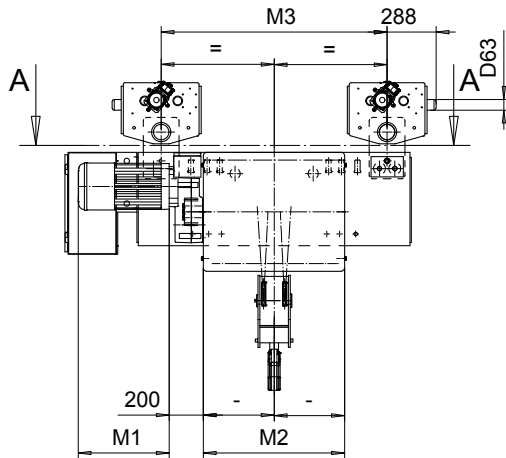
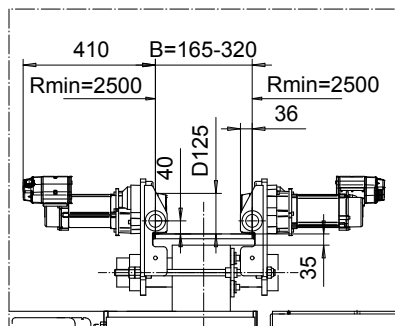


**NORMAL HEADROOM, 2 PART DOUBLE**  
**Hoist type:**  
**SX6 022...N0**

SI-50Hz



OPTION: CURVED TRACK SUSPENSION



Motor	P6,T6,T7,T8,T9	P7,TA	P8
M1 (mm)	536	576	711

HOL (m)	Length code	M2 (mm)	M3 (mm)	M4 (mm)	Weight (kg)
16.5	E	682	1330	145	1600
22	F	832	1330	145	1700
29.5	G	1022	1330	145	1800
39	H	1272	1930	145	2000
52	J	1622	1930	145	2250
63.5	K	1922	1330	530	2450
77	L	2272	1330	530	2800
86.5	M	2522	1330	805	3000
98	N	2822	1330	805	3250

Note: Weight when B = 300mm

Load (kg)	Class Fem/ISO	Hoisting motor				
		Hoisting speed (m/min): Gear code				
		8/1.3: E	10/1.7: F	12.5/2.1: G	16: H	20: J
6300	3m/M6	P6,T6	P6,T6	P7,T7	T8	T9
8000	2m/M5	P6,T6	P6,T6	P7,T7	T8	T9
10000	1Am/M4	P6,T6	P7,T7	P8,T8	T9	TA

CSDTLI Design 2003-04-15 Date	KHHMKKH Chd Appd	Ref Drawing	QD-N-22
SLEQDOCV Owner Dept	TROLLEY; NORMAL HEADROOM 2X2 ROPE FALLS		1 of 19 Folder
R&M R&M MATERIALS HANDLING, INC. HOIST & CRANE PRODUCTS SHERBOURNE, ONT.	D002535-A		Issue 3

This document is the absolute property of R&M Materials Handling, Inc. This document must not be copied without the written permission of R&M Materials Handling, Inc. The contents thereof must not be disclosed to a third party nor be used for any unauthorized purpose. Contravention will be prosecuted.