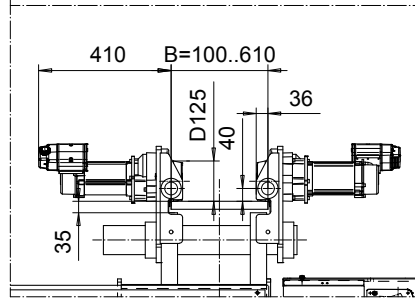
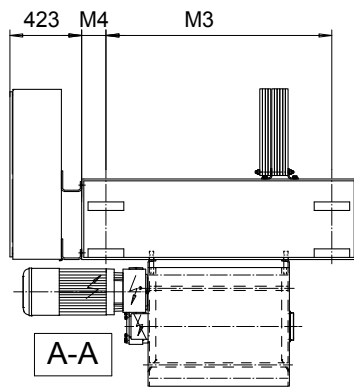
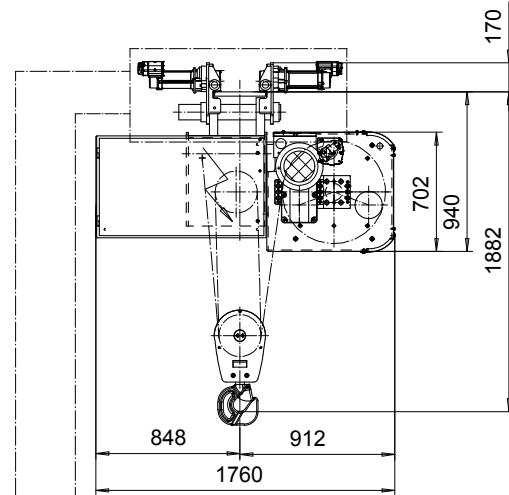
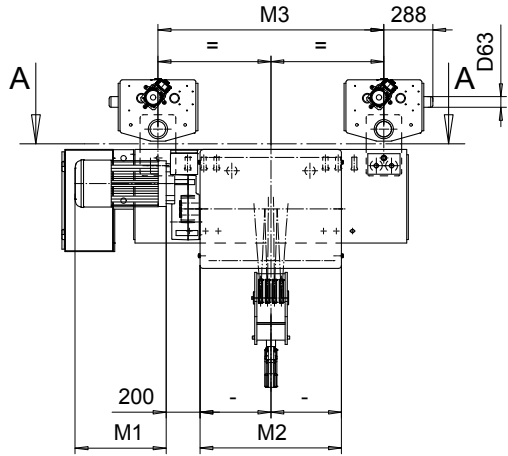
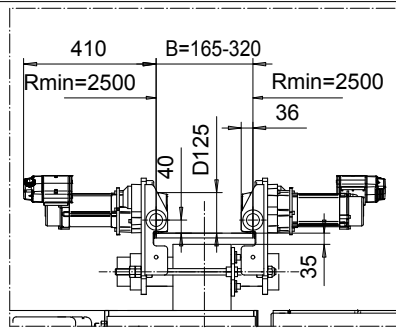


NORMAL HEADROOM, 4 PART DOUBLE
Hoist type:
SX6 042...N0

SI-50Hz



OPTION: CURVED TRACK SUSPENSION



Motor	P6,T6,T7,T8,T9	P7,TA	P8
M1 (mm)	536	576	711

HOL (m)	Length code	M2 (mm)	M3 (mm)	M4 (mm)	Weight (kg)
8	E	682	1330	145	1650
11	F	832	1330	145	1750
14.5	G	1022	1330	145	1850
19.5	H	1272	1930	145	2050
26	J	1622	1930	145	2300
31.5	K	1922	1330	530	2500
38.5	L	2272	1330	530	2850
43	M	2522	1330	805	3050
49	N	2822	1330	805	3300

Note: Weight when B = 300mm

Load (kg)	Class	Hoisting motor				
		Hoisting speed (m/min): Gear code				
	Fem/ISO	4/0.7: E	5/0.8: F	6.3/1.1: G	8: H	10: J
12500	3m/M6	P6,T6	P6,T6	P7,T7	T8	T9
16000	2m/M5	P6,T6	P6,T6	P7,T7	T8	T9
20000	1Am/M4	P6,T6	P7,T7	P8,T8	T9	TA

This document is the absolute property of R&M Materials Handling, Inc. This document must not be copied without the written permission of R&M Materials Handling, Inc. The contents thereof must not be disclosed to a third party nor be used for any unauthorized purpose. Contravention will be prosecuted.

CSDTLI Design 2003-04-14 Date	KHHMKKH Chd	Appd	Ref Drawing	QD-N-24
SLEQDCV Owner Dept	TROLLEY; NORMAL HEADROOM 2x4 ROPE FALLS			1 of 19 Folder
R&M R&M MATERIALS HANDLING, INC. HOIST & CRANE PRODUCTS GREENSBORO, NC	D002531-A			Issue 3