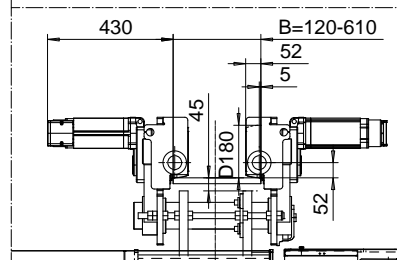
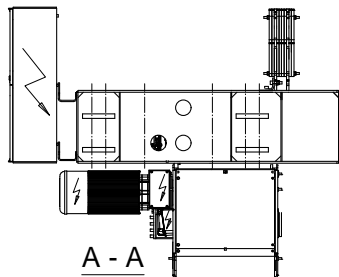
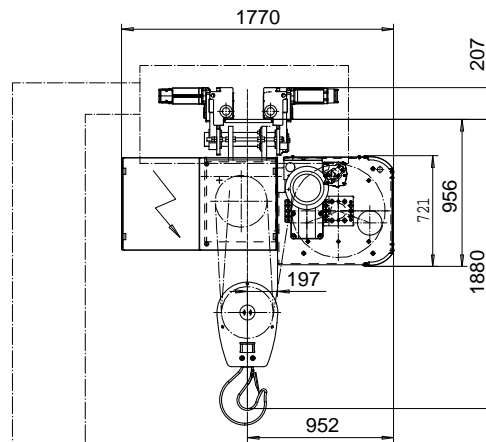
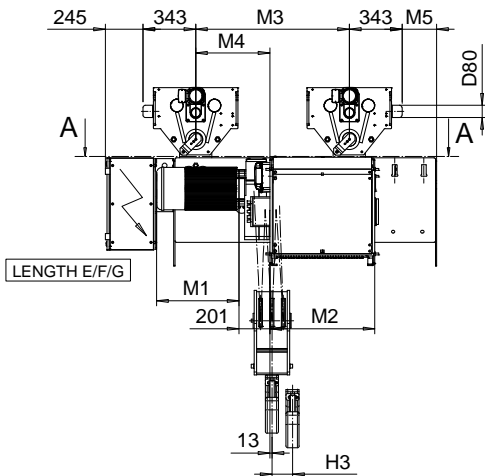


SI-50Hz

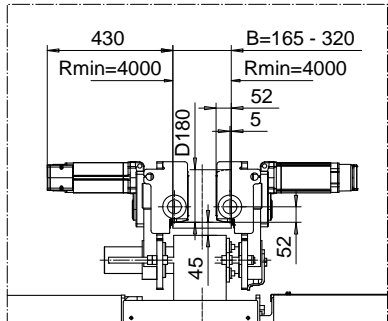
NORMAL HEADROOM, 6 PART SINGLE

Hoist type:

SX6 061...N0



OPTION: CURVED TRACK SUSPENSION



| | | | |
|---------|----------------|-------|-----|
| Motor | P6,T6,T7,T8,T9 | P7,TA | P8 |
| M1 (mm) | 536 | 576 | 711 |

| HOL (m) | Length code | M2 (mm) | M3 (mm) | M4 (mm) | M5 (mm) | H3 (mm) | Weight (kg) |
|---------|-------------|---------|---------|---------|---------|---------|-------------|
| 5 | C | 462 | 1200 | 484 | -200 | 46 | 1975 |
| 7 | D | 562 | 1200 | 484 | -200 | 63 | 2000 |
| 9 | E | 682 | 1000 | 484 | 225 | 84 | 2100 |
| 12 | F | 832 | 1000 | 484 | 225 | 107 | 2200 |
| 15.5 | G | 1022 | 1000 | 484 | 225 | 140 | 2350 |
| 20 | H | 1272 | 1450 | 574 | 765 | 182 | 2650 |
| 26.5 | J | 1622 | 1450 | 574 | 765 | 240 | 2950 |
| 32 | K | 1922 | 1450 | 574 | 765 | 289 | 3150 |

Note: Weight when B = 300mm

| Load (kg) | Class | Hoisting motor | | | | |
|-----------|---------|-----------------------------------|------------|----------|------|--------|
| | | Hoisting speed (m/min): Gear code | | | | |
| | Fem/ISO | 2.5/0.4: E | 3.2/0.5: F | 4/0.7: G | 5: H | 6.3: J |
| 20000 | 3m/M6 | P6,T6 | P6,T6 | P7,T7 | T8 | T9 |
| 25000 | 2m/M5 | P6,T6 | P6,T6 | P7,T7 | T8 | T9 |
| 30000 | 1Am/M4 | P6,T6 | P7,T7 | P8,T8 | T9 | TA |

This document is the absolute property of R&M Materials Handling, Inc. This document must not be copied without the written permission of R&M Materials Handling, Inc. The contents thereof must not be disclosed to a third party nor be used for any unauthorized purpose. Contravention will be prosecuted.

| | | | | |
|--------------------------------------------------------------------------|--------------------------|------|-------------|----------------------|
| ETVPH Design | ETTPAL Cltd | Appd | Ref Drawing | QD-N-06 |
| 2003-09-09 Date | TROLLEY; NORMAL HEADROOM | | | 1 of 19 Folio/rev |
| SLEQDOCV Owner Dept | 6 ROPE FALLS | | | |
| R&M MATERIALS HANDLING, INC. SERIES 6 ROPE FALLS SUSPENDED, STD | D002711-A | | | Issue 2 |