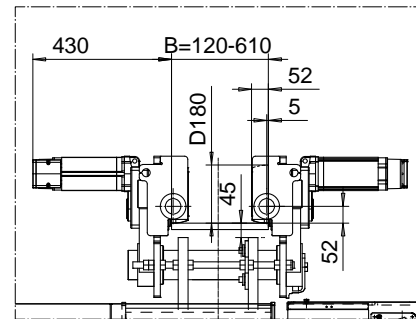
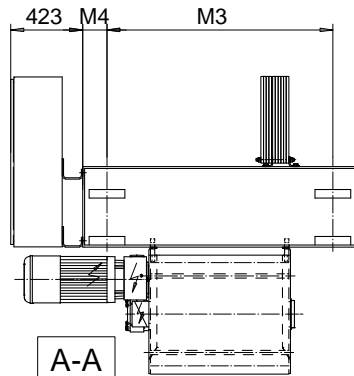
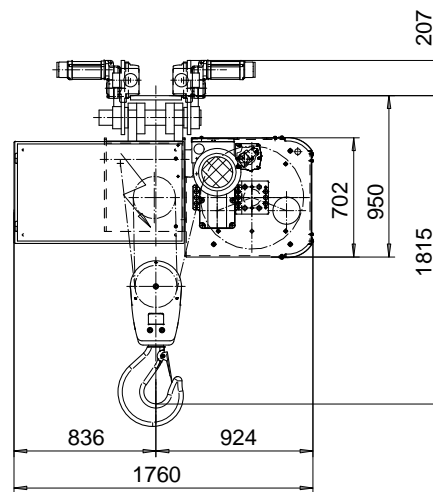
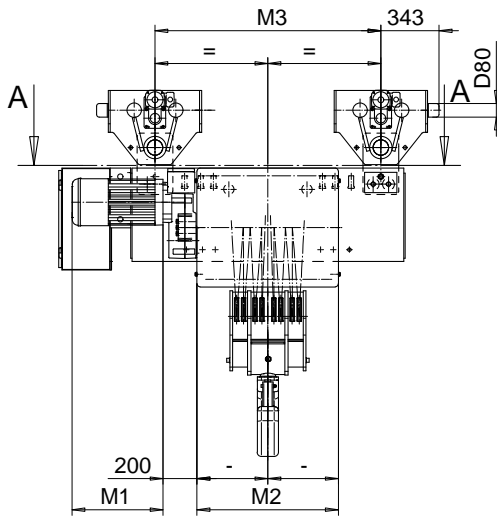
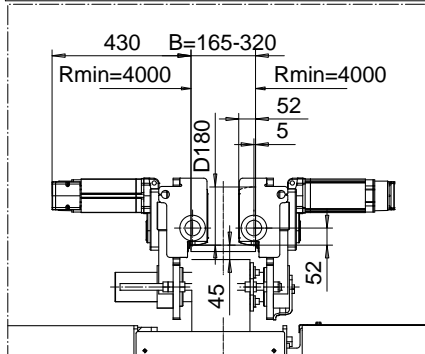


NORMAL HEADROOM, 8 PART DOUBLE
Hoist type:
SX6 082...N0

SI-50Hz



OPTION: CURVED TRACK SUSPENSION



Motor	P6,T6,T7,T8,T9	P7,TA	P8
M1 (mm)	536	576	711

HOL (m)	Length code	M2 (mm)	M3 (mm)	M4 (mm)	Weight (kg)
5.5	F	832	1330	145	2050
7	G	1022	1330	145	2150
9.5	H	1272	1930	145	2350
13	J	1622	1930	145	2600
15.5	K	1922	1330	530	2800
19	L	2272	1330	530	3150
21.5	M	2522	1330	805	3350
24.5	N	2822	1330	805	3600

Note: Weight when B = 300mm

Load (kg)	Class	Hoisting motor				
		Hoisting speed (m/min): Gear code				
		2/0.3: E	2.5/0.4: F	3.2/0.5: G	4: H	5: J
32000	2m/M5	P6,T6	P6,T6	P7,T7	T8	T9
40000	1Am/M4	P6,T6	P7,T7	P8,T8	T9	TA

This document is the absolute property of R&M Materials Handling, Inc. This document must not be copied without the written permission of R&M Materials Handling, Inc. The contents thereof must not be disclosed to a third party nor be used for any unauthorized purpose. Contravention will be prosecuted.

CSDTLI	KHHMKH			QD-N-28
Design	Chd	Appd	Ref Drawing	
2003-04-16				
Date	TROLLEY; NORMAL HEADROOM			1 of 19
SLEQDOCV	2X8 ROPE FALLS			Folder
Owner Dept				
R&M	R&M MATERIALS HANDLING, INC.			Issue
	HOIST & CRANE PRODUCTS			3
	SHREVEPORT, LOUISIANA	D002538-A		