

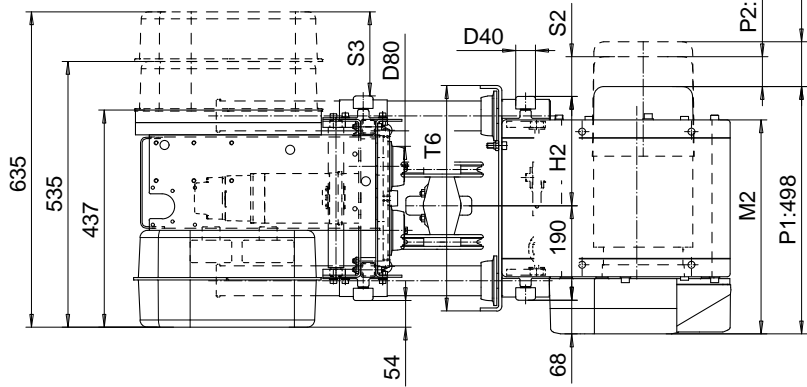
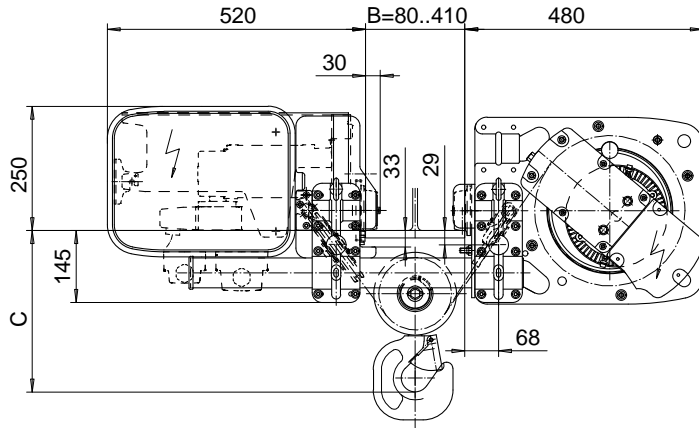
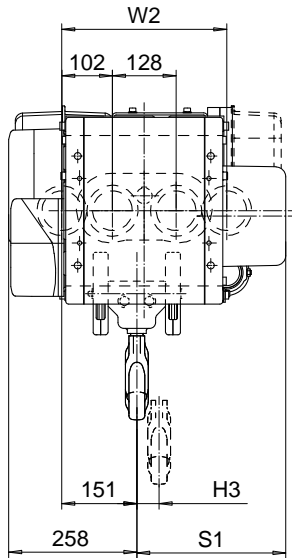
# LOW HEADROOM, 4 PART SINGLE

Hoist type:

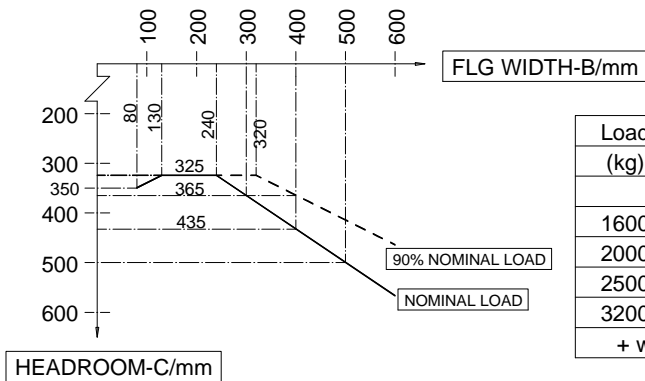
SX2 041..L0

SX3 041..L0

SI-60Hz



## HEADROOM CHART



Load (kg)	Class Fem/ISO	Hoisting speed (m/min)			
		Gear+Motor code:			
		F+P1	F+P2	G+P2	H+P3
1600	3m/M6	6/1	6/1	7.5/1.3	9.5/1.6
2000	2m/M5	6/1	6/1	7.5/1.3	9.5/1.6
2500	3m/M6	-	6/1	7.5/1.3	9.5/1.6
3200	2m/M5	-	6/1	7.5/1.3	9.5/1.6
+ weight (kg):		-	10	10	13

HOL (m)	Length code	M2 (mm)	H2 (mm)	H3 (mm)	S1(mm)			S2(mm)			S3 (mm)	T6 (mm)	W2 (mm)	Weight (kg)
					P1	P2	P3	P1	P2	P3				
6	A	431	220	45	242	300	330	22	80	110	170	454	332	180
9.5	C	561	350	72	303	303	330	83	83	110	66	584	462	200

Note: S1,S2 are the dimensions to the outermost part in each case, without the second control enclosure

This document is the absolute property of R&M Materials Handling, Inc. This document must not be copied without the written permission of R&M Materials Handling, Inc. The contents thereof must not be disclosed to a third party nor be used for any unauthorized purpose. Contravention will be prosecuted.

Design	Rev	Appd	Ref Drawing	QA-L-04
Date	TROLLEY; LOW HEADROOM			
DESIGNED BY	4 ROPE FALLS			
OWNER/DEPT				
R&M	R&M MATERIALS HANDLING, INC. ELECTRIC & CONVEYOR SYSTEMS SHEWAN/UMC			
	D002080-A			
	4			