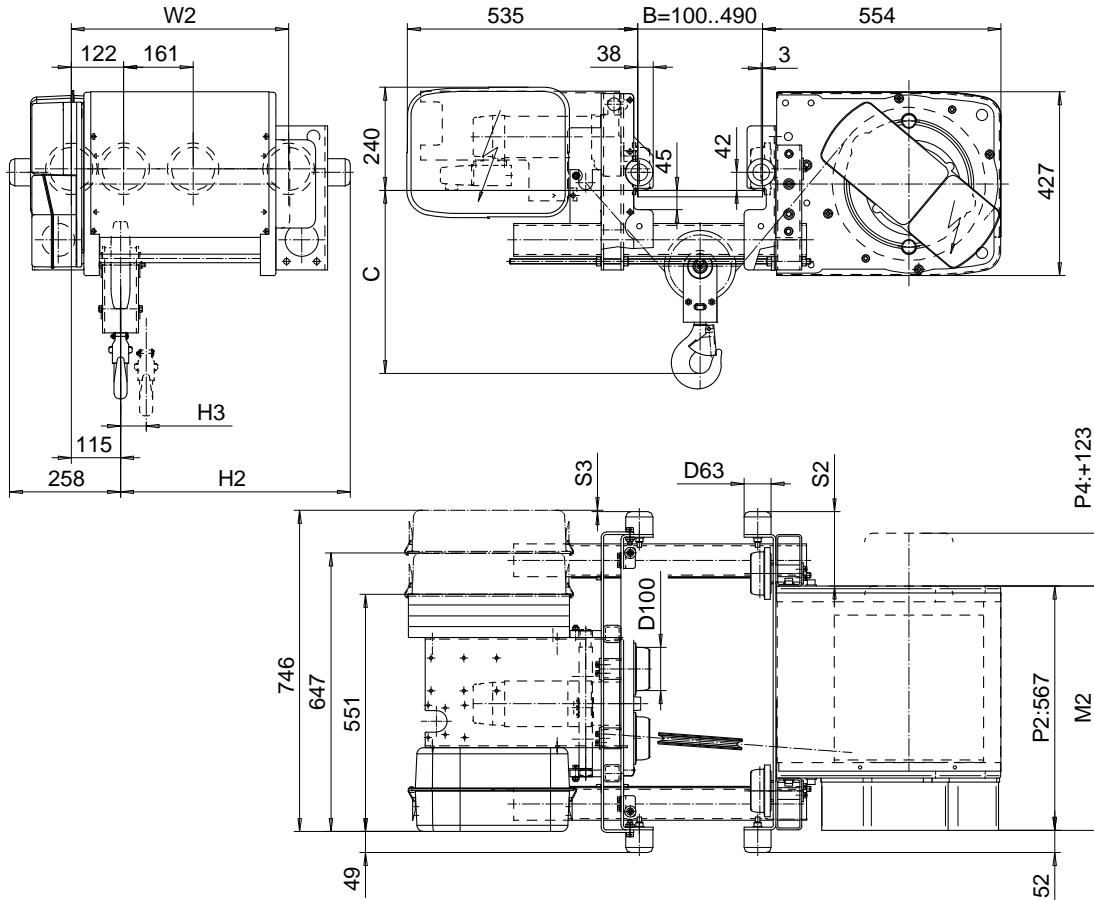


LOW HEADROOM, 2 PART SINGLE (A2), SPECIAL

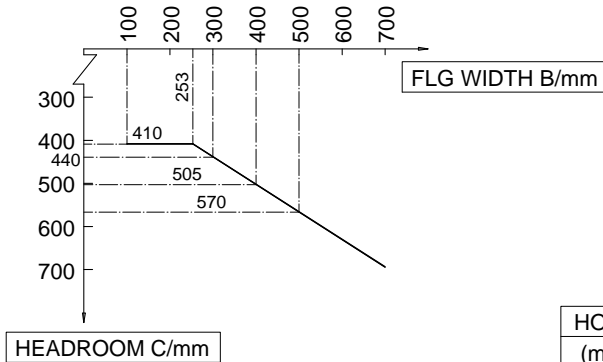
Hoist type:

SX4 021 (A2)...L0

SI-60Hz



HEADROOM CHART



Load (kg)	Class Fem/ISO	Hoisting speed (m/min)		
		Gear+Motor code:		
		E+P2	F+P2	H+P4
1000	3m/M6	9.5/1.6	12/2	19/3.2
1250	3m/M6	9.5/1.6	12/2	19/3.2
1600	2m/M5	9.5/1.6	12/2	19/3.2
+ weight (kg):		-	-	40

HOL (m)	Length code	M2 (mm)	H2 (mm)	H3 (mm)	S2 (mm)	S3 (mm)	W2 (mm)	Weight (kg)
22.5	C	567	534	144	173	3	505	320
30	D	667	634	193	273	-97	605	340

This document is the absolute property of R&M Materials Handling, Inc. This document must not be copied without the written permission of R&M Materials Handling, Inc. The contents thereof must not be disclosed to a third party nor be used for any unauthorized purpose. Contravention will be prosecuted.

CSDPAL Design	CSDPAL Title	Appd	Ref Drawing	QB-L-A2
2002-08-28 Date	TROLLEY; LOW HEADROOM			1:1, 7.5
SLE@RNG1 Owner Dept	2 ROPE FALLS, 1600 kg			Tol:Min
R&M MATERIALS HANDLING, INC. R&M & CONE PRODUCTS SHEPHERD, OHIO	D002106-A			Drawn 3