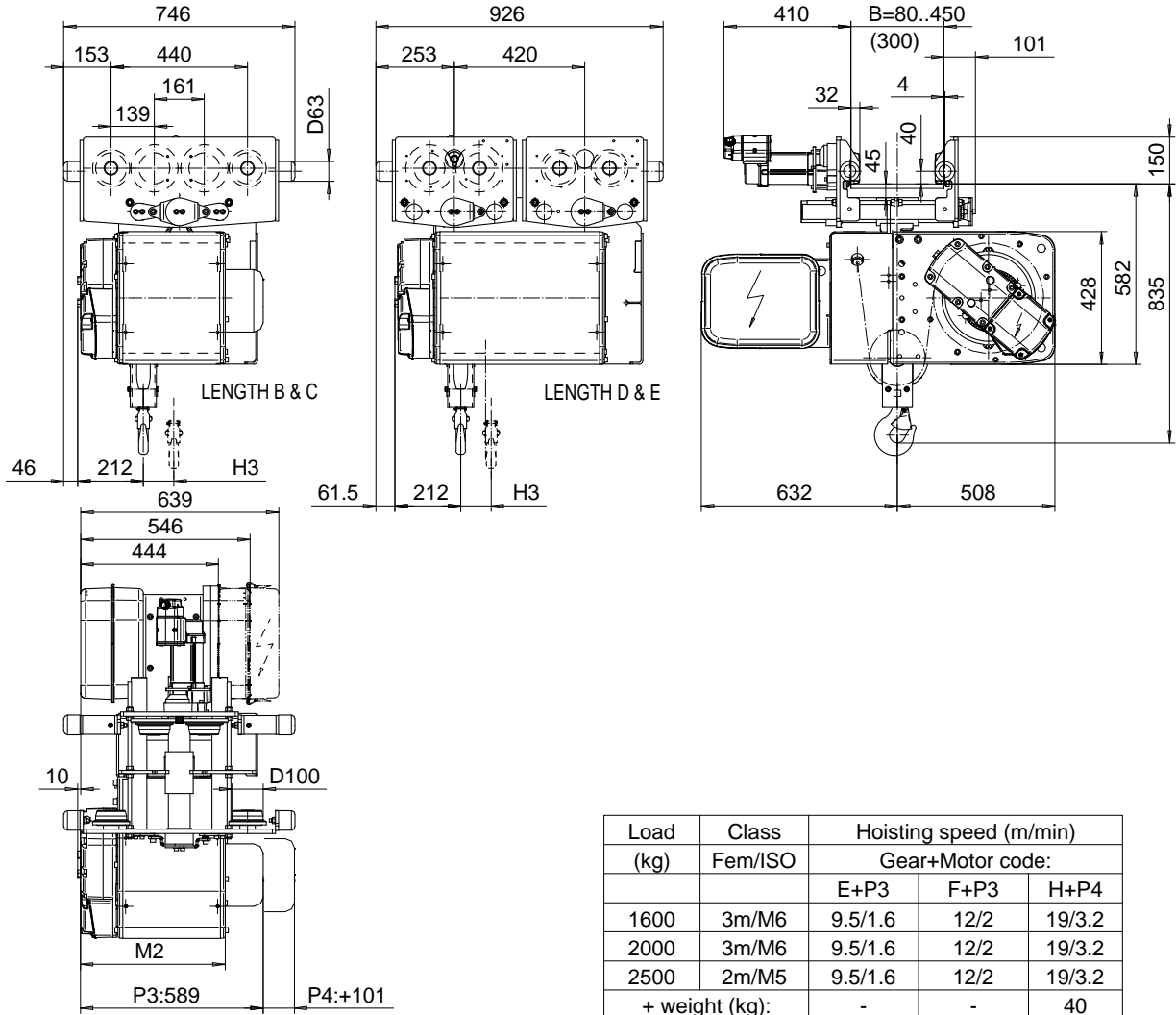


NORMAL HEADROOM, 2 PART SINGLE

Hoist type:

SX4 021...N0

SI-60Hz



Load (kg)	Class Fem/ISO	Hoisting speed (m/min)		
		Gear+Motor code:		
		E+P3	F+P3	H+P4
1600	3m/M6	9.5/1.6	12/2	19/3.2
2000	3m/M6	9.5/1.6	12/2	19/3.2
2500	2m/M5	9.5/1.6	12/2	19/3.2
+ weight (kg):		-	-	40

Note: Weight calculated, when B = 300mm

HOL (m)	Length code	M2 (mm)	H3 (mm)	Weight (kg)
12	B	467	98	325
18	C	567	147	345
24	D	667	198	405
30	E	787	258	425

This document is the absolute property of R&M Materials Handling, Inc. This document must not be copied without the written permission of R&M Materials Handling, Inc. The contents thereof must not be disclosed to a third party nor be used for any unauthorized purpose. Contravention will be prosecuted.

ETFPAL Design	ETFPAL Chd	Appd	Ref Drawing	QB-N-02
2002-08-27 Date	TROLLEY; NORMAL HEADROOM			1-10
SLEQDOCV Owner Dept	2 ROPE FALLS			Folder
R&M MATERIALS HANDLING, INC. HOIST & CRANE PRODUCTS SARASOTA, FL 34235	D002090-A			Issue 3