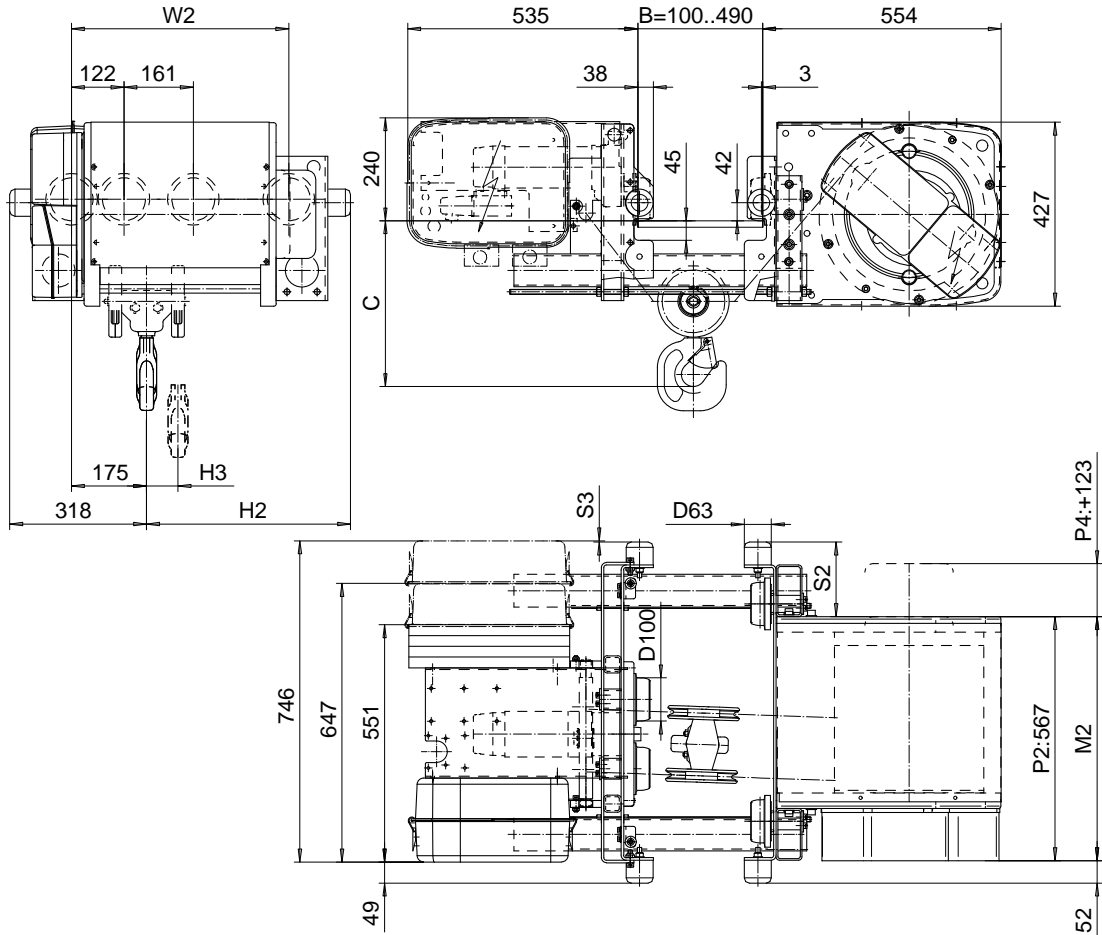


LOW HEADROOM, 4 PART SINGLE (A4), SPECIAL

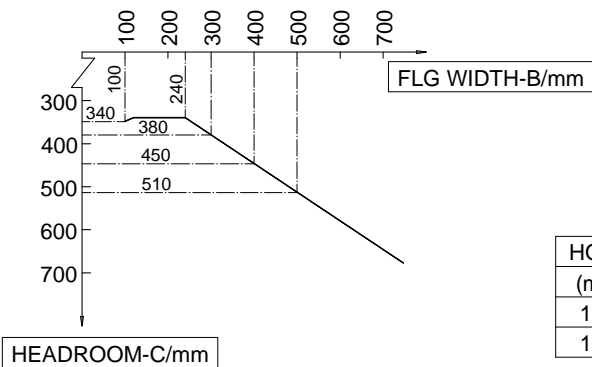
Hoist type:

SX4 041 (A4)...L0

SI-60Hz



HEADROOM CHART



Load (kg)	Class Fem/ISO	Hoisting speed (m/min)		
		Gear+Motor code:		
		E+P2	F+P2	H+P4
2000	3m/M6	4.8/0.8	6/1	9.5/1.6
2500	3m/M6	4.8/0.8	6/1	9.5/1.6
3200	2m/M5	4.8/0.8	6/1	9.5/1.6
+ weight (kg):		-	-	40

HOL (m)	Length code	M2 (mm)	H2 (mm)	H3 (mm)	S2 (mm)	S3 (mm)	W2 (mm)	Weight (kg)
11	C	567	474	73	173	3	505	335
15	D	667	574	99	273	-97	605	355

This document is the absolute property of R&M Materials Handling, Inc. This document must not be copied without the written permission of R&M Materials Handling, Inc. The contents thereof must not be disclosed to a third party nor be used for any unauthorized purpose. Contravention will be prosecuted.

CSDPAL Design	CSDPAL Title	Appd	Ref Drawing	QB-L-A4
2002-08-28 Date	TROLLEY; LOW HEADROOM			1:1, 7:5 Tol:0.1
SLEPQEN01 Owner Dept	4 ROPE FALLS, 3200 kg			
R&M MATERIALS HANDLING, INC. RISER & CONE DIVISION SHEPHERD, PA	D002107-A			Drawn 3