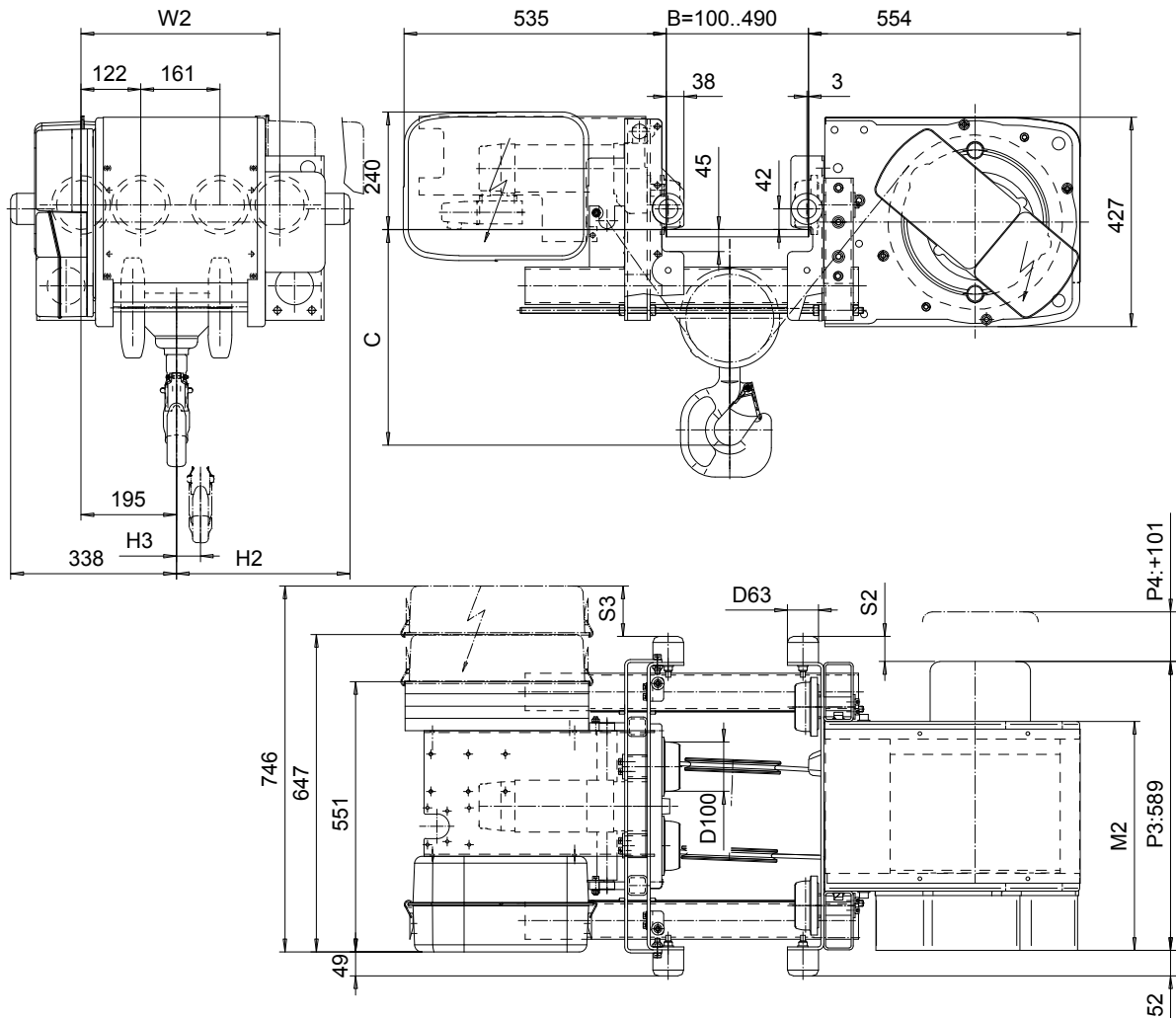


# LOW HEADROOM, 4 PART SINGLE

Hoist type:

SX4 041...L0

SI-60Hz



HEADROOM CHART

HEADROOM TABLE	
Flange Width, B (mm)	Headroom, C (mm)
100 - 199	490
200 - 249	460
250 - 300	425
301 - 350	455
351 - 400	490
401 - 450	520
451 - 490	550

Headroom is related to the flange width

Load (kg)	Class Fem/ISO	Hoisting speed (m/min)		
		Gear+Motor code:		
		E+P3	F+P3	H+P4
3000	3m/M6	4.8/0.8	6/1	9.5/1.6
4000	3m/M6	4.8/0.8	6/1	9.5/1.6
5000	2m/M5	4.8/0.8	6/1	9.5/1.6
+ weight (kg):			-	40

HOL (m)	Length code	M2 (mm)	H2 (mm)	H3 (mm)	S2 (mm)	S3 (mm)	W2 (mm)	Weight (kg)
6	B	467	354	49	51	78	405	383
9	C	567	454	74	151	-22	505	403
12	D	667	554	99	251	-122	605	423

This document is the absolute property of R&M Materials Handling, Inc. This document must not be copied without the written permission of R&M Materials Handling, Inc. The contents thereof must not be disclosed to a third party nor be used for any unauthorized purpose. Contravention will be prosecuted.

CSDPAL Design	CSDPAL Chd	Appd	Ref Drawing	QB-L-04
2002-08-27 Date	TROLLEY; LOW HEADROOM			1:6.5
SLEIENG1 Owner Dept	4 ROPE FALLS			10/06
R&M MATERIALS HANDLING INC.	R&M MATERIALS HANDLING, INC HOIST & CRANE PRODUCTS SPRINGFIELD, OHIO	D002092-A		3