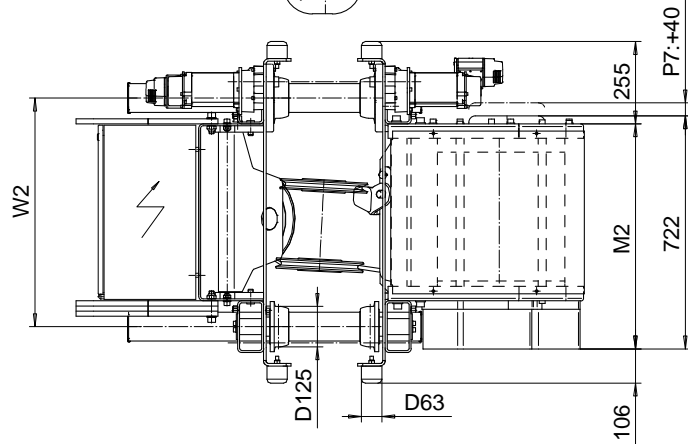
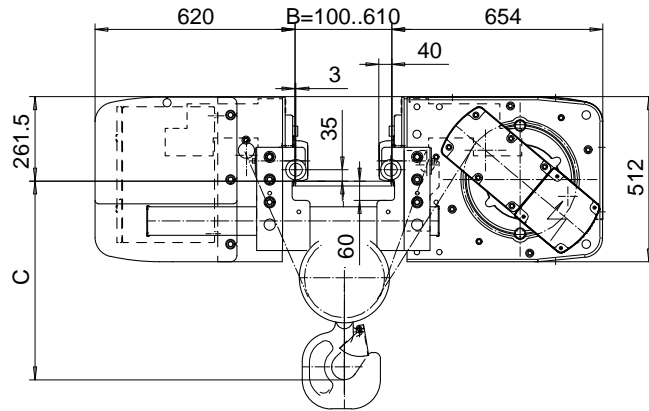
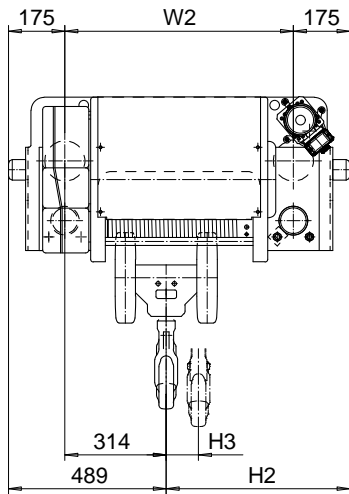
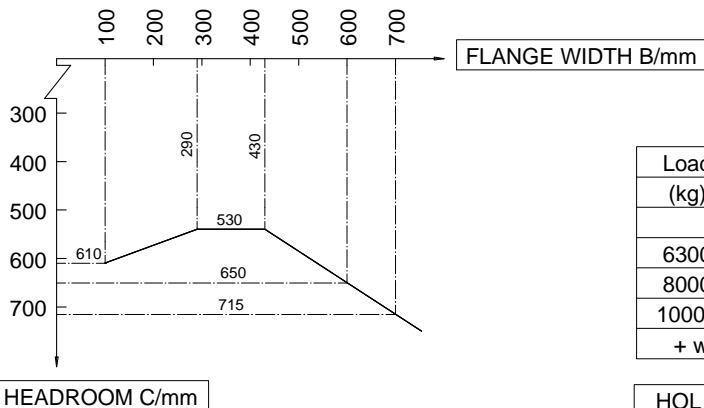


**LOW HEADROOM, 4 PART SINGLE**  
**Hoist type:**  
**SX5 041...L0**

**SI-60Hz**



**HEADROOM CHART**



| Load (kg)      | Class Fem/ISO | Hoisting speed (m/min) |      |         |      |
|----------------|---------------|------------------------|------|---------|------|
|                |               | Gear+Motor code:       |      |         |      |
|                |               | E+P5                   | F+P5 | H+P6    | J+P7 |
| 6300           | 3m/M6         | 4.8/0.8                | 6/1  | 9.5/1.6 | 12/2 |
| 8000           | 3m/M6         | 4.8/0.8                | 6/1  | 9.5/1.6 | 12/2 |
| 10000          | 2m/M5         | 4.8/0.8                | 6/1  | 9.5/1.6 | 12/2 |
| + weight (kg): |               | -                      | -    | 60      | 80   |

| HOL (m) | Length code | M2 (mm) | H2 (mm) | H3 (mm) | W2 (mm) | Weight (kg) |
|---------|-------------|---------|---------|---------|---------|-------------|
| 9       | D           | 697     | 569     | 88      | 708     | 610         |
| 12      | E           | 817     | 689     | 118     | 828     | 660         |
| 16      | F           | 967     | 839     | 156     | 978     | 710         |

This document is the absolute property of R&M Materials Handling, Inc. This document must not be copied without the written permission of R&M Materials Handling, Inc. The contents thereof must not be disclosed to a third party nor be used for any unauthorized purpose. Contravention will be prosecuted.

|   |                                       |                |
|---|---------------------------------------|----------------|
| ETPAL<br>Design<br>2002-08-29<br>Date   | ETPAL<br>Chd<br>Appd<br>Ref Drawing   | QC-L-04        |
| SLEQDOCV<br>Owner Dept  | TROLLEY; LOW HEADROOM<br>4 ROPE FALLS | 1-10<br>Folder |
| R&M<br>R&M MATERIALS HANDLING, INC.<br>HOIST & GEAR PRODUCTS<br>SHELBYVILLE, OHIO | D002117-A                             | Issue<br>4     |