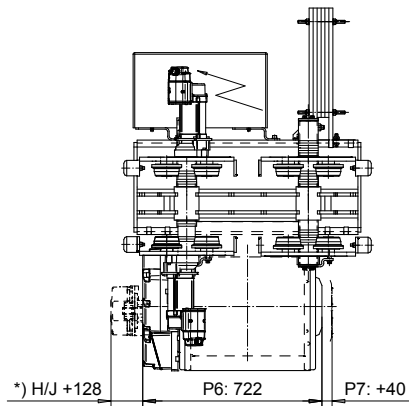
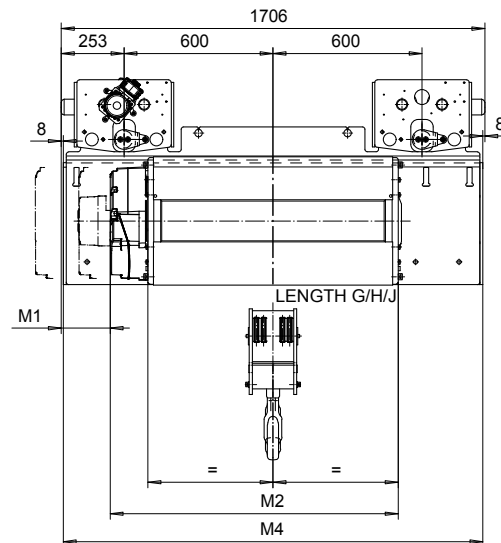
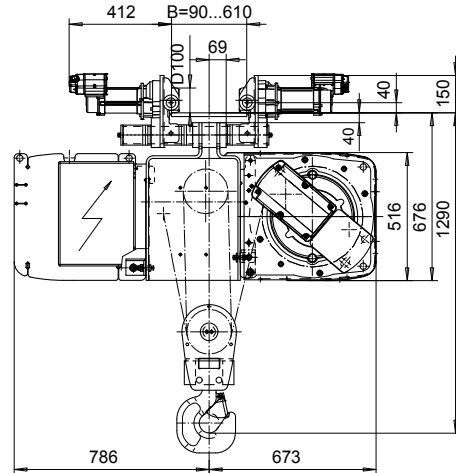
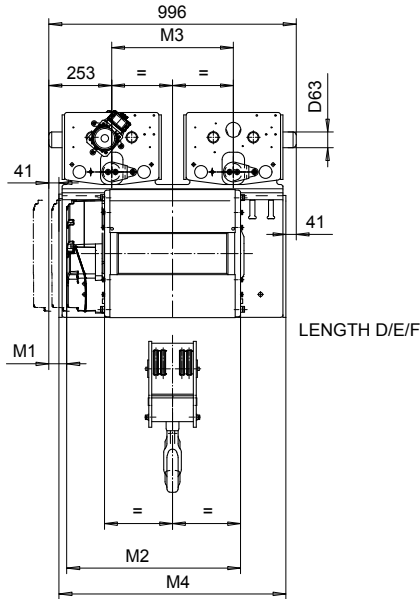


NORMAL HEADROOM, 4 PART DOUBLE  
 Hoist type:  
 SX5042...N0

SI-60Hz



Load (kg)	Class Fem/ISO	Hoisting speed (m/min)			
		Gear+Motor code:			
		E+P5	F+P5	H+P6	J+P7
6300	3m/M6	4.8/0.8	6/1	9.5/1.6	12/2
8000	3m/M6	4.8/0.8	6/1	9.5/1.6	12/2
10000	2m/M5	4.8/0.8	6/1	9.5/1.6	12/2
+ weight (kg):		-	-	60	80

HOL (m)	Length code	M1 (mm)	M2 (mm)	M3 (mm)	M4 (mm)	Weight (kg)
4	D	72	697	490	914	900
6.5	E	12	817	490	914	950
9	F	-63	967	490	914	1000
12.5	G	197	1157	1200	1690	1180
16.5	H	72	1407	1200	1690	1230
23	J	-103	1757	1200	1690	1300

Note:  
 Weight calculated, when B=300mm

Note:  
 \*) Gear brake as standard brake for drum lengths H and J

This document is the absolute property of R&M Materials Handling, Inc. This document must not be copied without the written permission of R&M Materials Handling, Inc. The contents thereof must not be disclosed to a third party nor be used for any unauthorized purpose. Contravention will be prosecuted.

ETTPH Design	ETTPH Chd	Appd	Ref Drawing	QC-N-24
2004-04-27 Date	TROLLEY; NORMAL HEADROOM			1 of 15 Folder
SLEQDCV Owner Dept	2x4 ROPE FALLS			
R&M MATERIALS HANDLING, INC. HOIST & CRANE PRODUCTS	D003135-A			Issue 3