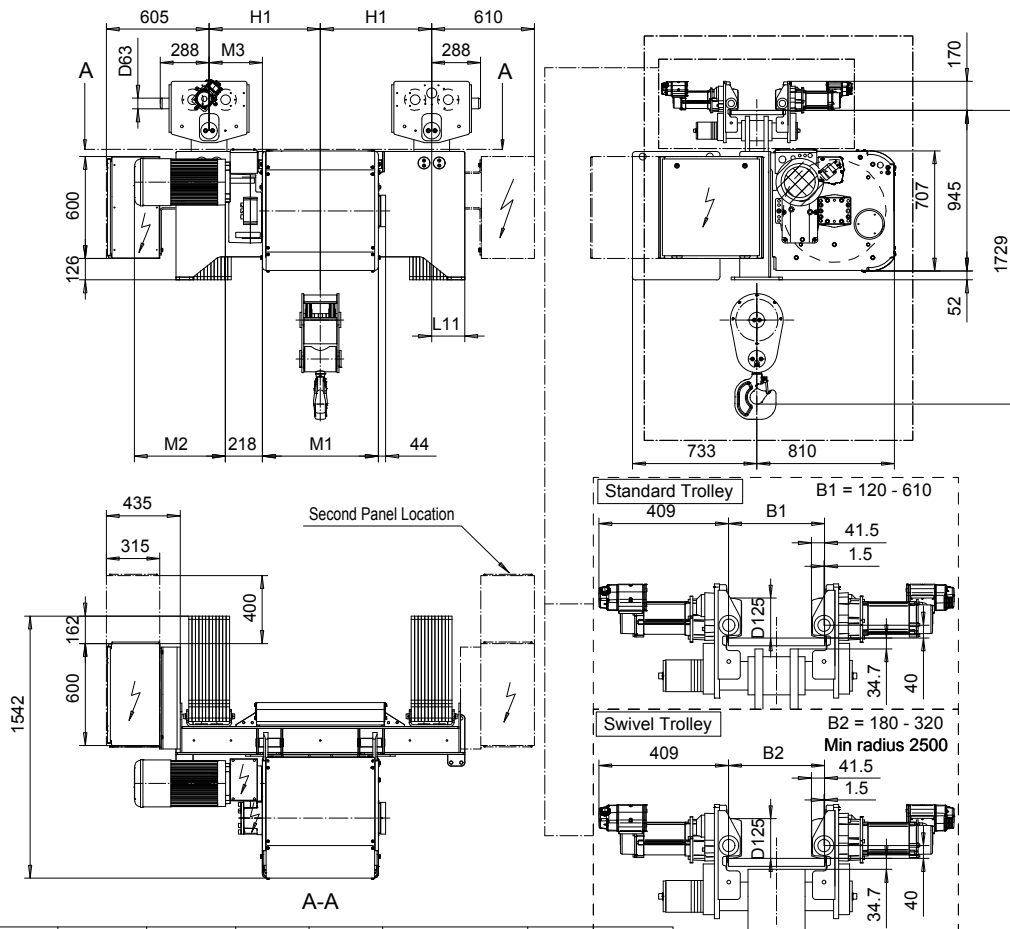


NORMAL HEADROOM, 2 PART DOUBLE
Hoist type:
SX6 022...N0

SI-60Hz



HOL (m)	Length code	M1 (mm)	M3 (mm)	H1 (mm)	L11 (mm)	Wgt - Std Trolley (kg)	Wgt - Swivel Trolley (kg)
16.5	E	682	314	655	195	2000	2200
22	F	832	239	655	195	2100	2300
29.5	G	1022	144	655	195	2300	2500
39	H	1272	319	955	195	2500	2800
52	J	1622	144	955	195	2800	3100
63.5	K	1922	-306	655	520	3000	3300
77	L	2272	-481	655	520	3300	3600
86.5	M	2522	-306	955	495	3600	4000
98	N	2822	-456	955	495	3800	4300

Note: Weight when B = 300mm

Load (kg)	Class Fem/ISO	Hoisting motor					
		Hoisting speed (m/min): Gear code					
		9.5/1.6: E	12/2: F	15/2.5: G	19: H	24: J	
6300	3m/M6	P6,T6	P6,T6	P7,T7	T8	T9	
8000	2m/M5	P6,T6	P6,T6	P7,T7	T8	T9	
10000	1Am/M4	P6,T6	P7,T7	P8,T8	T9	TA	

Motor	P6,T6,T7,T8,T9	P7,TA	P8
M2 (mm)	536	576	711

Hoist Panel Dimensions WxD (mm) + Configuration for Monorail Hoists				
Trolley control type	2-spd or CMXC	CM Select 002	CM Select 003-004	CM Select 005-007
Panel size + 2nd panel size - 380-500V	1000 x 600	1000 x 600	1000 x 600	1000 x 600 + 1000 x 600
Panel size + 2nd panel size - Other Voltages	1000 x 600	1000 x 600	1000 x 600 + 600 x 400	1000 x 600 + 1000 x 600

This document is the absolute property of R&M Materials Handling, Inc. This document must not be copied without the written permission of R&M Materials Handling, Inc. The contents thereof must not be disclosed to a third party nor be used for any unauthorized purpose. Contravention will be prosecuted.

CSDTLI Design 2010-11-30 Date	KHHMKH Chd	Appd	Ref Drawing	QD-N-22
SLEODOCV Owner Dept	TROLLEY; NORMAL HEADROOM 2X2 ROPE FALLS			1 of 19 Folder
R&M MATERIALS HANDLING INC.	R&M MATERIALS HANDLING, INC HOIST & CRANE PRODUCTS SPRINGFIELD, OHIO	D006895-A		Issue 02/2011