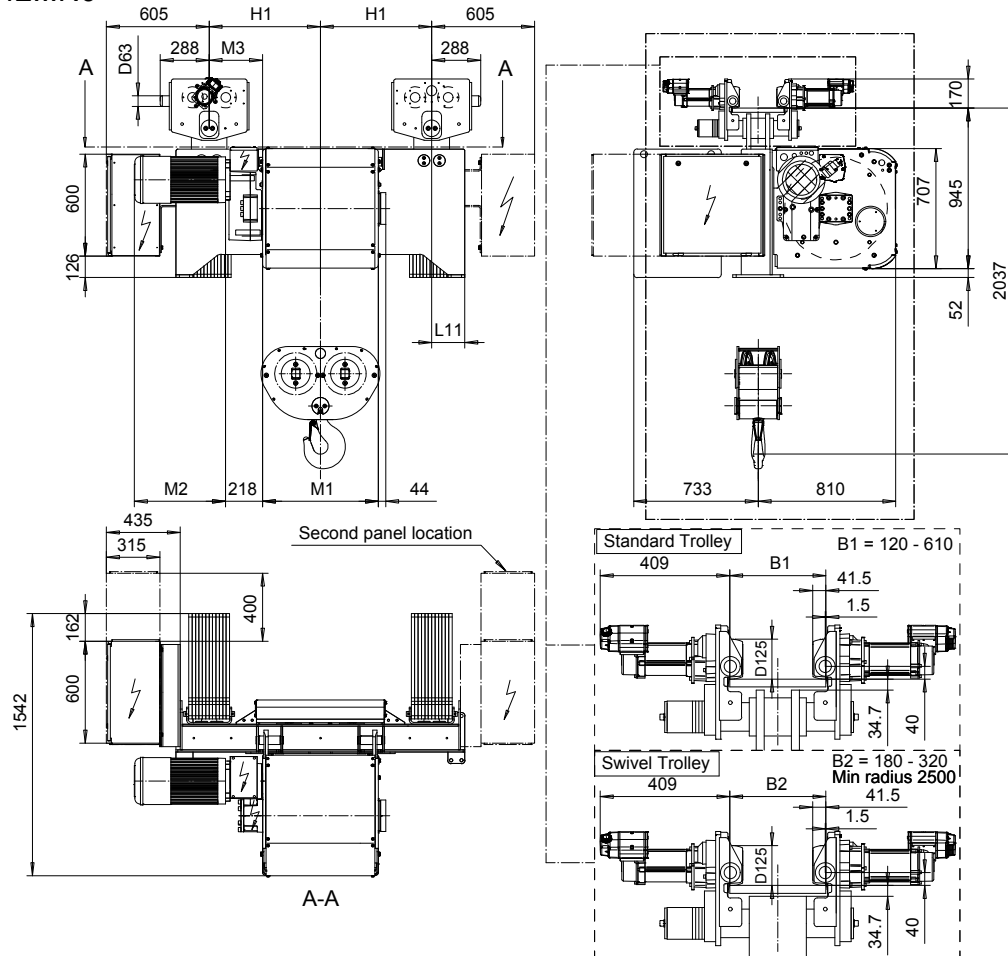


NORMAL HEADROOM, 4 PART DOUBLE

Hoist type:

SX6 042...N0

SI-60Hz



HOL	Length	M1	M3	H1	L11	Wgt - Std Trlly	Wgt - Swivel Trlly
(m)	code	(mm)	(mm)	(mm)	(mm)	(kg)	(kg)
8	E	682	314	655	195	2100	2300
11	F	832	239	655	195	2200	2400
14.5	G	1022	144	655	195	2400	2600
19.5	H	1272	319	955	195	2600	2900
26	J	1622	144	955	195	2900	3100
31.5	K	1922	-306	655	520	3100	3400
38.5	L	2272	-481	655	520	3400	3700
43	M	2522	-306	955	495	3700	4100
49	N	2822	-456	955	495	3900	4300

Note: Weight when B = 300mm

Motor	P6,T6,T7,T8,T9	P7,TA	P8
M2 (mm)	536	576	711

Load (kg)	Class Fem/ISO	Hoisting motor					
		Hoisting speed (m/min): Gear code					
		4.8/0.8: E	6/1: F	7.5/1.2: G	9.5: H	12: J	
12500	3m/M6	P6,T6	P6,T6	P7,T7	T8	T9	
16000	2m/M5	P6,T6	P6,T6	P7,T7	T8	T9	
20000	1Am/M4	P6,T6	P7,T7	P8,T8	T9	TA	

Hoist Panel Dimensions WxD (mm) + Configuration for Monorail Hoists				
Trolley control type	2-spd or CMXC	CM Select 002	CM Select 003-004	CM Select 005-007
Panel size + 2nd panel size - 380-500V	1000 x 600	1000 x 600	1000 x 600	1000 x 600 + 1000 x 600
Panel size + 2nd panel size - Other Voltages	1000 x 600	1000 x 600	1000 x 600 + 600 x 400	1000 x 600 + 1000 x 600

This document is the absolute property of R&M Materials Handling, Inc. This document must not be copied without the written permission of R&M Materials Handling, Inc. The contents thereof must not be disclosed to a third party nor be used for any unauthorized purpose. Contravention will be prosecuted.

CSDTLI Design 2010-11-30 Date	KHHMKH Chd	Appd	Ref Drawing	QD-N-24
SLEODOCV Owner Dept	TROLLEY; NORMAL HEADROOM 2x4 ROPE FALLS			1 of 19 Folder
R&M MATERIALS HANDLING INC.	R&M MATERIALS HANDLING, INC HOIST & CRANE PRODUCTS SPRINGFIELD, OHIO	D006896-A		Issue 11/2010