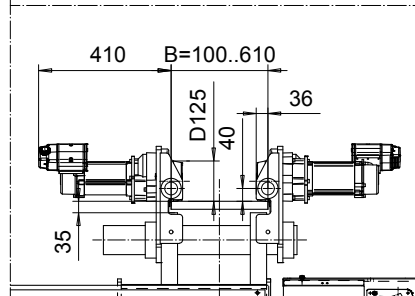
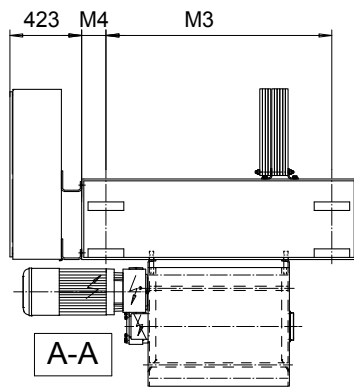
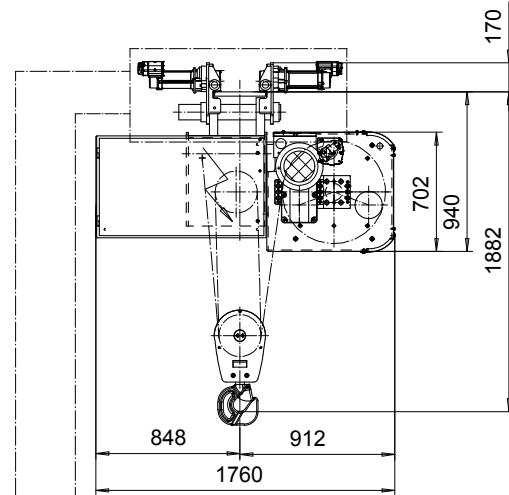
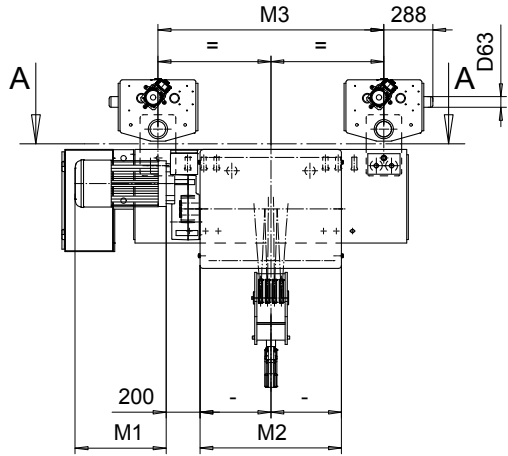
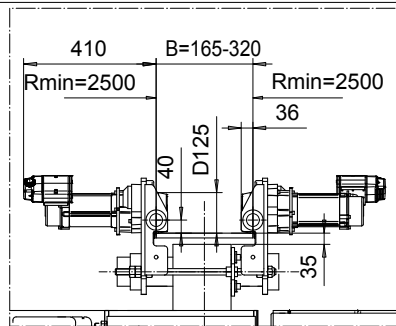


NORMAL HEADROOM, 4 PART DOUBLE
Hoist type:
SX6 042...N0

SI-60Hz



OPTION: CURVED TRACK SUSPENSION



Motor	P6,T6,T7,T8,T9	P7,TA	P8
M1 (mm)	536	576	711

HOL (m)	Length code	M2 (mm)	M3 (mm)	M4 (mm)	Weight (kg)
8	E	682	1330	145	1650
11	F	832	1330	145	1750
14.5	G	1022	1330	145	1850
19.5	H	1272	1930	145	2050
26	J	1622	1930	145	2300
31.5	K	1922	1330	530	2500
38.5	L	2272	1330	530	2850
43	M	2522	1330	805	3050
49	N	2822	1330	805	3300

Note: Weight when B = 300mm

Load (kg)	Class	Hoisting motor				
		Hoisting speed (m/min): Gear code				
		4.8/0.8: E	6/1: F	7.5/1.2: G	9.5: H	12: J
12500	3m/M6	P6,T6	P6,T6	P7,T7	T8	T9
16000	2m/M5	P6,T6	P6,T6	P7,T7	T8	T9
20000	1Am/M4	P6,T6	P7,T7	P8,T8	T9	TA

CSDTLI Design	KHHMKKH Chd	Appd	Ref Drawing	QD-N-24
2003-04-14 Date	TROLLEY; NORMAL HEADROOM			1 of 19 Folder
SLEQDOCV Owner Dept	2x4 ROPE FALLS			
R&M	S&W MATERIALS HANDLING, INC. HOIST & CRANE PRODUCTS	D002531-A		Issue 3

This document is the absolute property of R&M Materials Handling, Inc. This document must not be copied without the written permission of R&M Materials Handling, Inc. The contents thereof must not be disclosed to a third party nor be used for any unauthorized purpose. Contravention will be prosecuted.