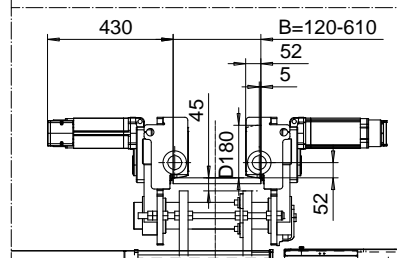
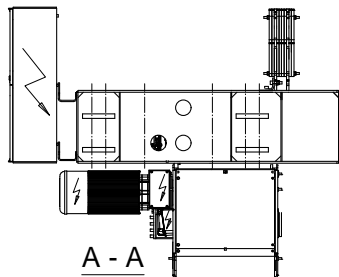
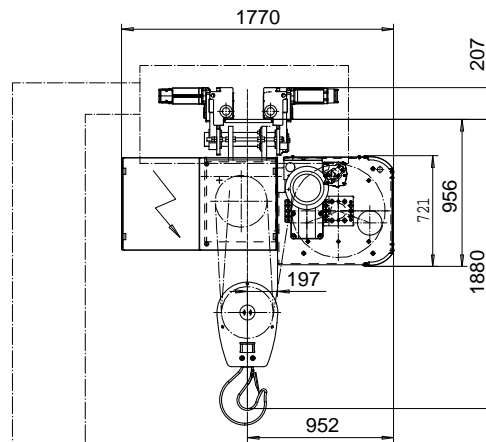
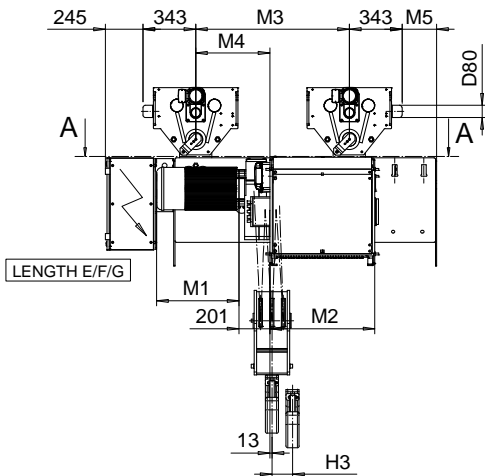


SI-60Hz

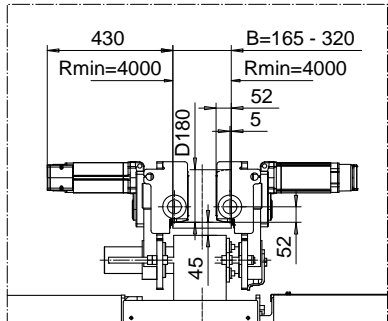
NORMAL HEADROOM, 6 PART SINGLE

Hoist type:

SX6 061...N0



OPTION: CURVED TRACK SUSPENSION



Motor	P6,T6,T7,T8,T9	P7,TA	P8
M1 (mm)	536	576	711

HOL (m)	Length code	M2 (mm)	M3 (mm)	M4 (mm)	M5 (mm)	H3 (mm)	Weight (kg)
5	C	462	1200	484	-200	46	1975
7	D	562	1200	484	-200	63	2000
9	E	682	1000	484	225	84	2100
12	F	832	1000	484	225	107	2200
15.5	G	1022	1000	484	225	140	2350
20	H	1272	1450	574	765	182	2650
26.5	J	1622	1450	574	765	240	2950
32	K	1922	1450	574	765	289	3150

Note: Weight when B = 300mm

Load (kg)	Class Fem/ISO	Hoisting motor				
		Hoisting speed (m/min): Gear code				
		3/0.5: E	3.8/0.6: F	4.8/0.8: G	6: H	7.5: J
20000	3m/M6	P6,T6	P6,T6	P7,T7	T8	T9
25000	2m/M5	P6,T6	P6,T6	P7,T7	T8	T9
30000	1Am/M4	P6,T6	P7,T7	P8,T8	T9	TA

This document is the absolute property of R&M Materials Handling, Inc. This document must not be copied without the written permission of R&M Materials Handling, Inc. The contents thereof must not be disclosed to a third party nor be used for any unauthorized purpose. Contravention will be prosecuted.

ETVPH Design	ETTPAL Cltd	Appd	Ref Drawing	QD-N-06
2003-09-09 Date	TROLLEY; NORMAL HEADROOM			1 of 19 Folio/rev
SLEQDOCV Owner Dept	6 ROPE FALLS			
R&M MATERIALS HANDLING, INC. SERIES 1000 PRODUCTS SUNBELT, IND.	D002711-A			Issue 2