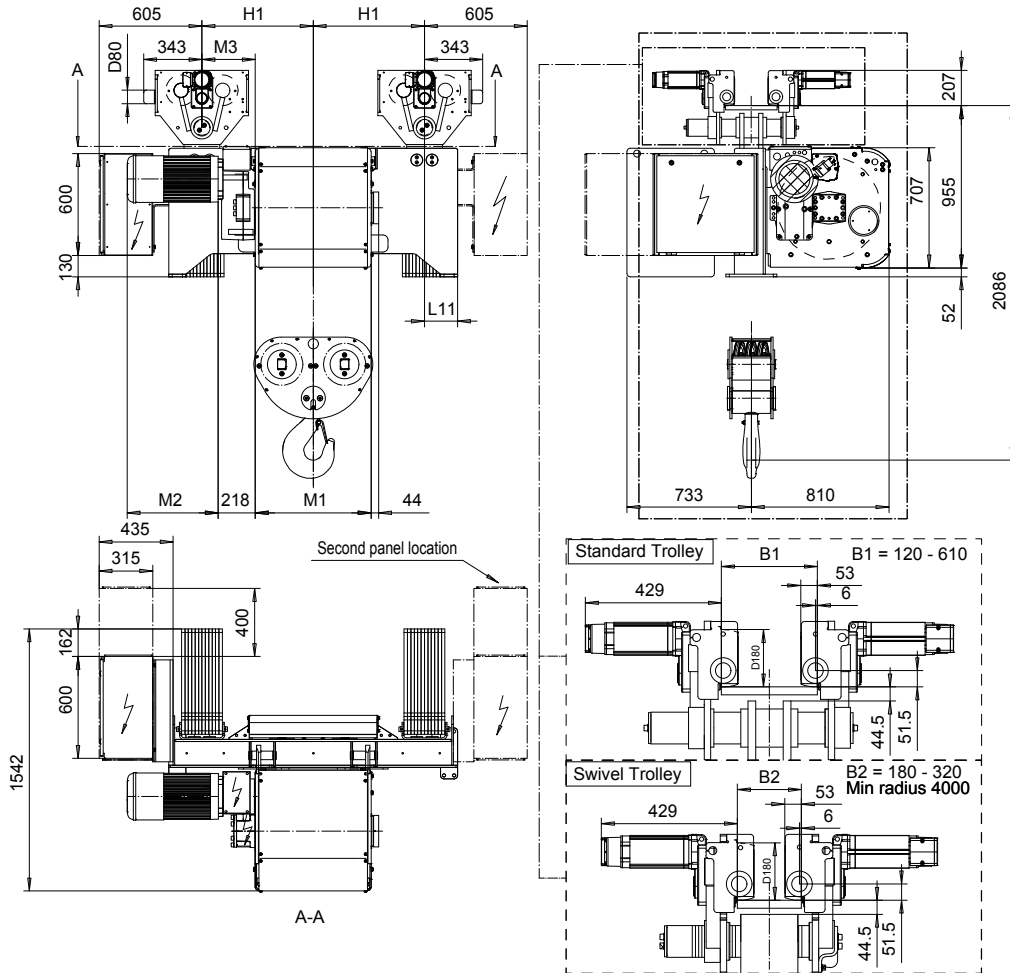


NORMAL HEADROOM, 6 PART DOUBLE
Hoist type:
SX6 062...N0

SI-60Hz



HOL	Length	M1	M3	H1	L11	Wgt - Std Ttry	Wgt - Swivel Ttry
(m)	code	(mm)	(mm)	(mm)	(mm)	(kg)	(kg)
5.5	E	682	314	655	195	2400	2600
7	F	832	239	655	195	2500	2700
9.5	G	1022	144	655	195	2700	2900
13	H	1272	319	955	195	2900	3200
17	J	1622	144	955	195	3200	3500
21	K	1922	-306	655	520	3400	3700
25.5	L	2272	-481	655	520	3700	4000
28.5	M	2522	-306	955	495	4000	4400
32.5	N	2822	-456	955	495	4200	4700

Note: Weight when B = 300mm

Load (kg)	Class	Hoisting motor				
		Hoisting speed (m/min): Gear code				
		3/0.4: E	3.8/0.6: F	4.8/0.8: G	6: H	7.5: J
20000	3m/M6	P6,T6	P6,T6	P7,T7	T8	T9
25000	2m/M5	P6,T6	P6,T6	P7,T7	T8	T9
30000	1Am/M4	P6,T6	P7,T7	P8,T8	T9	TA

Motor	P6,T6,T7,T8,T9	P7,TA	P8
M1 (mm)	536	576	711

Hoist Panel Dimensions WxD (mm) + Configuration for Monorail Hoists				
Trolley control type	2-spd or CMXC	CM Select 002	CM Select 003-004	CM Select 005-007
Panel size + 2nd panel size - 380-500V	1000 x 600	1000 x 600	1000 x 600	1000 x 600 + 1000 x 600
Panel size + 2nd panel size - Other Voltages	1000 x 600	1000 x 600	1000 x 600 + 600 x 400	1000 x 600 + 1000 x 600

This document is the absolute property of R&M Materials Handling, Inc. This document must not be copied without the written permission of R&M Materials Handling, Inc. The contents thereof must not be disclosed to a third party nor be used for any unauthorized purpose. Contravention will be prosecuted.

CSDTLI Design 20103-11-30 Date	KHHMKH Chd Appd	Ref Drawing	QD-N-26
SLEODOCV Owner Dept	TROLLEY; NORMAL HEADROOM 2x6 ROPE FALLS		1 of 19 Folder
R&M MATERIALS HANDLING INC.	R&M MATERIALS HANDLING, INC HOIST & CRANE PRODUCTS SPRINGFIELD, OHIO	D006897-A	Issue 11/2010