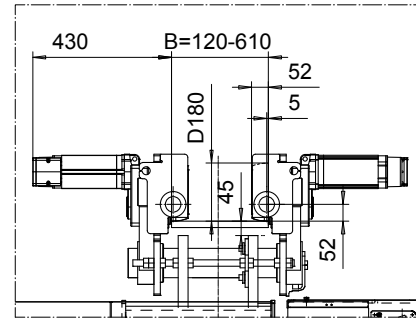
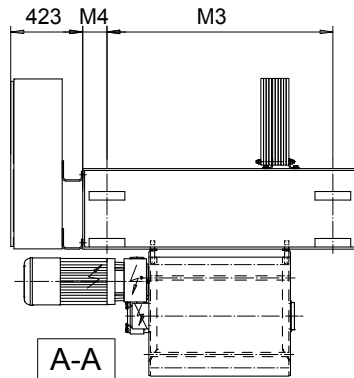
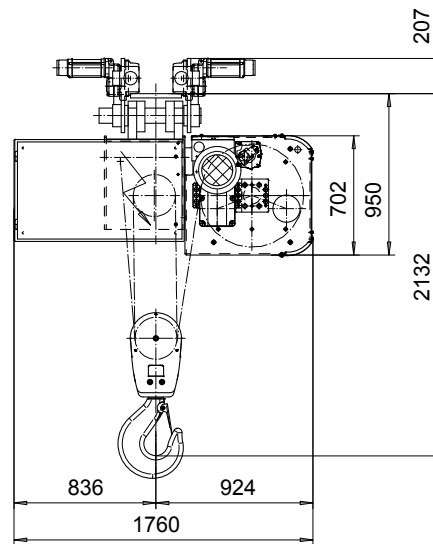
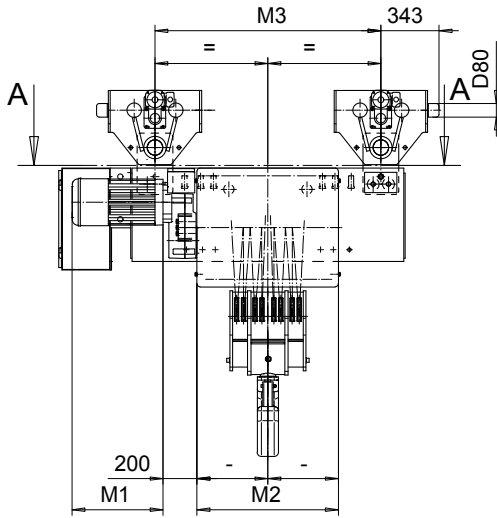
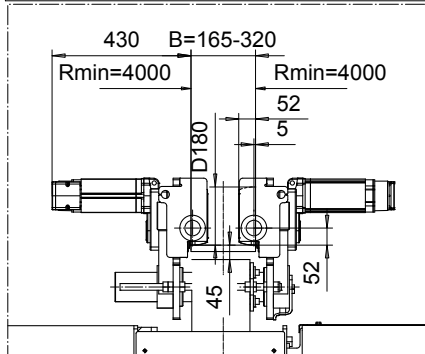


**NORMAL HEADROOM, 8 PART DOUBLE**  
**Hoist type:**  
**SX6 082...N0**

SI-60Hz



**OPTION: CURVED TRACK SUSPENSION**



|         |                |       |     |
|---------|----------------|-------|-----|
| Motor   | P6,T6,T7,T8,T9 | P7,TA | P8  |
| M1 (mm) | 536            | 576   | 711 |

| HOL (m) | Length code | M2 (mm) | M3 (mm) | M4 (mm) | Weight (kg) |
|---------|-------------|---------|---------|---------|-------------|
| 5.5     | F           | 832     | 1330    | 145     | 2050        |
| 7       | G           | 1022    | 1330    | 145     | 2150        |
| 9.5     | H           | 1272    | 1930    | 145     | 2350        |
| 13      | J           | 1622    | 1930    | 145     | 2600        |
| 15.5    | K           | 1922    | 1330    | 530     | 2800        |
| 19      | L           | 2272    | 1330    | 530     | 3150        |
| 21.5    | M           | 2522    | 1330    | 805     | 3350        |
| 24.5    | N           | 2822    | 1330    | 805     | 3600        |

Note: Weight when B = 300mm

| Load (kg) | Class Fem/ISO | Hoisting motor                    |          |            |        |      |
|-----------|---------------|-----------------------------------|----------|------------|--------|------|
|           |               | Hoisting speed (m/min): Gear code |          |            |        |      |
|           |               | 2.4/0.4: E                        | 3/0.5: F | 3.8/0.6: G | 4.8: H | 5: J |
| 32000     | 2m/M5         | P6,T6                             | P6,T6    | P7,T7      | T8     | T9   |
| 40000     | 1Am/M4        | P6,T6                             | P7,T7    | P8,T8      | T9     | TA   |

This document is the absolute property of R&M Materials Handling, Inc. This document must not be copied without the written permission of R&M Materials Handling, Inc. The contents thereof must not be disclosed to a third party nor be used for any unauthorized purpose. Contravention will be prosecuted.

|   |  |             |                   |
|---|--|-------------|-------------------|
| CSDTLI<br>Design<br>2003-04-16<br>Date  | KHHMKKH<br>Chd<br>Appd                     | Ref Drawing | QD-N-28           |
| SLEQDCV<br>Owner Dept   | TROLLEY; NORMAL HEADROOM<br>2X8 ROPE FALLS |             | 1 of 19<br>Folder |
| R&M<br>R&M MATERIALS HANDLING, INC.<br>HOIST & CRANE PRODUCTS<br>GREENSBORO, NC | D002538-A                                  |             | Issue<br>3        |