

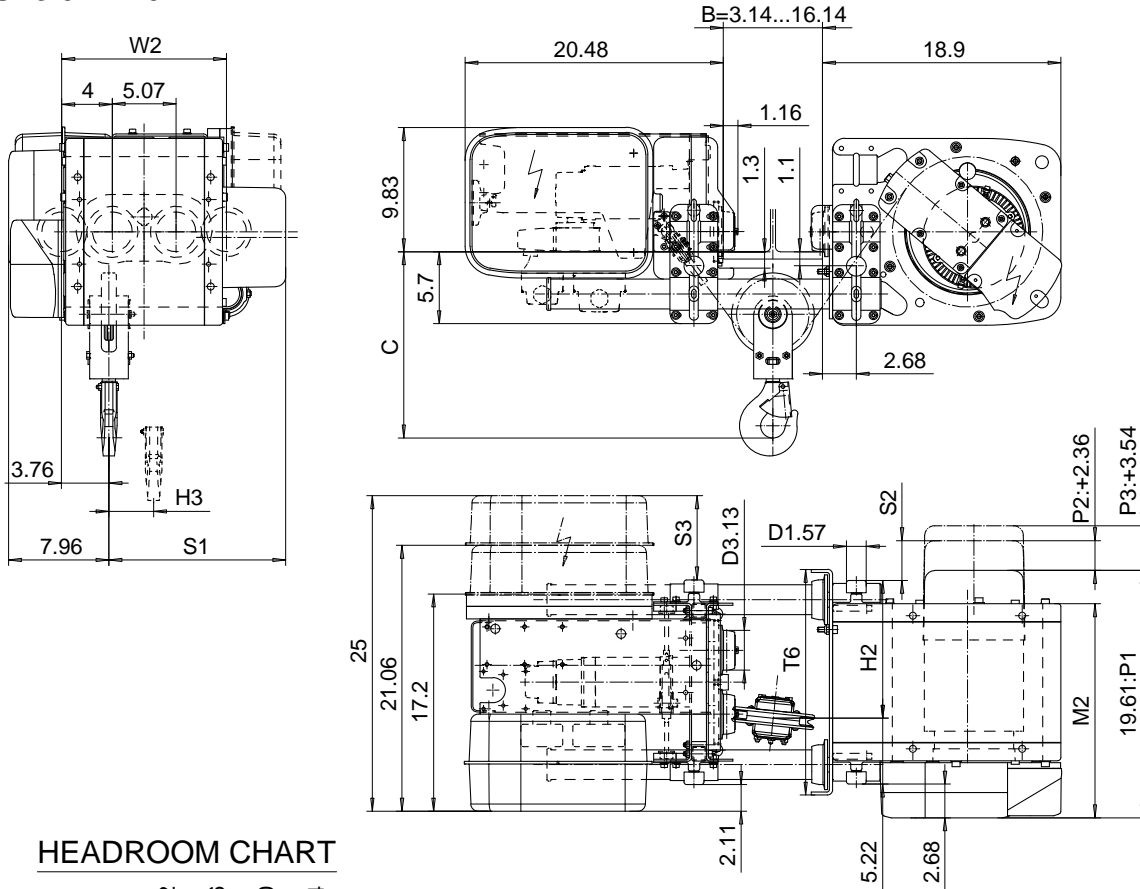
# LOW HEADROOM, 2 PART SINGLE

Hoist type:

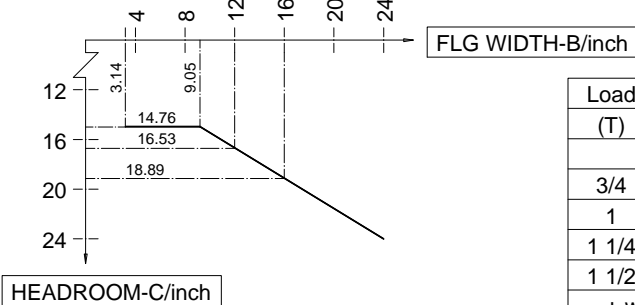
SX2 021..L0

SX3 021..L0

US-60Hz



HEADROOM CHART



Load (T)	Class ASME	Hoisting speed (ft/min)			
		F+P1	F+P2	G+P2	H+P3
3/4	H4+	40/6.7	40/6.7	50/7.8	60/9.8
1	H4	40/6.7	40/6.7	50/7.8	60/9.8
1 1/4	H4+	-	40/6.7	50/7.8	60/9.8
1 1/2	H4	-	40/6.7	50/7.8	60/9.8
+ weight (lb):		-	20	20	26

HOL (ft)	Length code	M2 (inch)	H2 (inch)	H3 (inch)	S1 (inch)			S2 (inch)			S3 (inch)	T6 (inch)	W2 (inch)	Weight (lb)
					P1	P2	P3	P1	P2	P3				
39'-4"	A	16.97	10.86	3.54	11.73	14.02	15.20	0.87	3.15	4.33	6.69	17.87	13.07	350
62'-4"	C	22.08	15.98	5.66	14.13	14.13	15.20	3.27	3.27	4.33	2.59	22.99	18.18	390

Note: S1,S2 are the dimensions to the outermost part in each case, without the second control enclosure

This document is the absolute property of R&M Materials Handling, Inc. This document must not be copied without the written permission of R&M Materials Handling, Inc. The contents thereof must not be disclosed to a third party nor be used for any unauthorized purpose. Contravention will be prosecuted.

Design	Chk	Appd	Ref Drawing	QA-L-02
Date	TROLLEY; LOW HEADROOM			1 of 4
SLEWMECE Owner Dept	2 ROPE FALLS			
R&M MATERIALS HANDLING, INC. EQUIPMENT DIVISION	D002075-A			4