

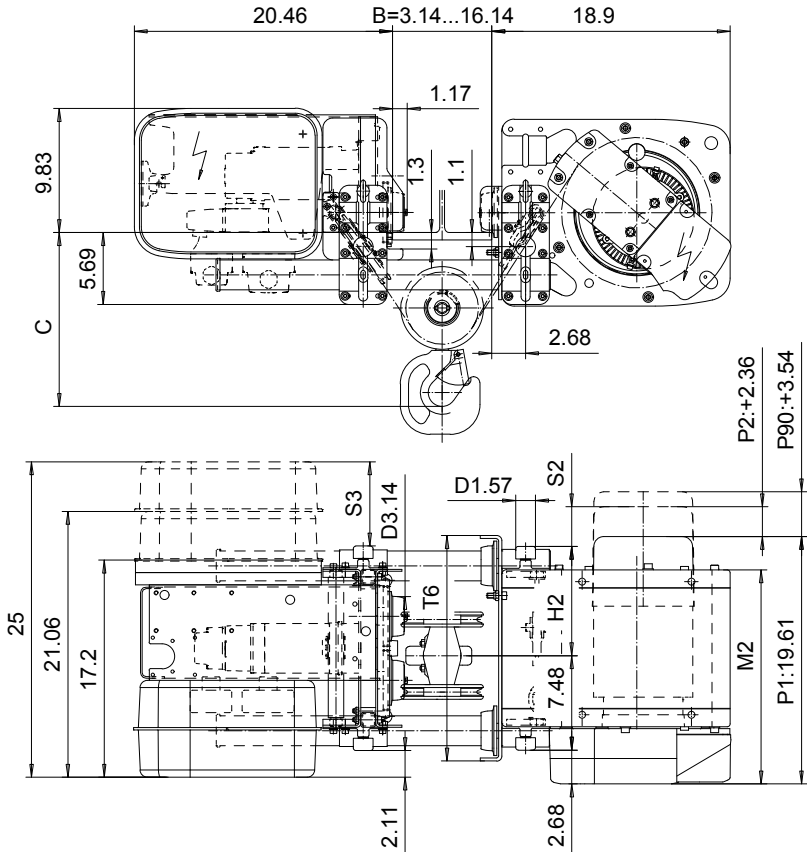
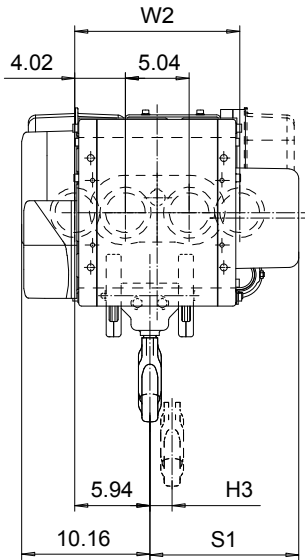
LOW HEADROOM, 4 PART SINGLE

Hoist type:

US-60Hz

SX2 041..L0

SX3 041..L0



HEADROOM TABLE	
Flange Width, B (in)	Headroom, C (in)
3.1 - 10.62	13.78
10.67 - 12.62	15
12.64 - 14.56	16.14
14.6 - 16.14	17.13

Headroom is related to the flange width

Load (TON)	Class ASME	Hoisting speed (ft/min)			
		Gear+Motor code:			
		F+P1	F+P2	G+P2	H+P3
1 1/2	H4+	20/3.1	20/3.1	25/3.9	30/4.9
2	H4	20/3.1	20/3.1	25/3.9	30/4.9
2 1/2	H4+	-	20/3.1	25/3.9	30/4.9
3	H4	-	20/3.1	25/3.9	30/4.9
+ weight (lb):		-	20	20	26

HOL (ft)	Length code	M2 (inch)	H2 (inch)	H3 (inch)	S1(inch)			S2(inch)			S3 (inch)	T6 (inch)	W2 (inch)	Weight (lb)
					P1	P2	P3	P1	P2	P3				
19'-8"	A	16.97	8.66	1.77	9.53	11.81	12.99	0.87	3.14	4.33	6.69	17.87	13.07	474
31'-2"	C	22.08	13.77	2.83	11.93	11.93	12.99	3.26	3.26	4.33	2.59	22.99	18.18	518

Note: S1,S2 are the dimensions to the outermost part in each case, without the second control enclosure

This document is the absolute property of R&M Materials Handling, Inc. This document must not be copied without the written permission of R&M Materials Handling, Inc. The contents thereof must not be disclosed to a third party nor be used for any unauthorized purpose. Contravention will be prosecuted.

Design	Ctrl	Appd	Ref Drawing	QA-L-04
Date	TROLLEY; LOW HEADROOM			
DESIGNED BY	4 ROPE FALLS			
DRWN BY	D002080-A			
R&M MATERIALS HANDLING INC.	R&M MATERIALS HANDLING INC. HOIST & CRANE PRODUCTS SPRINGFIELD, OHIO			
Scale	4			