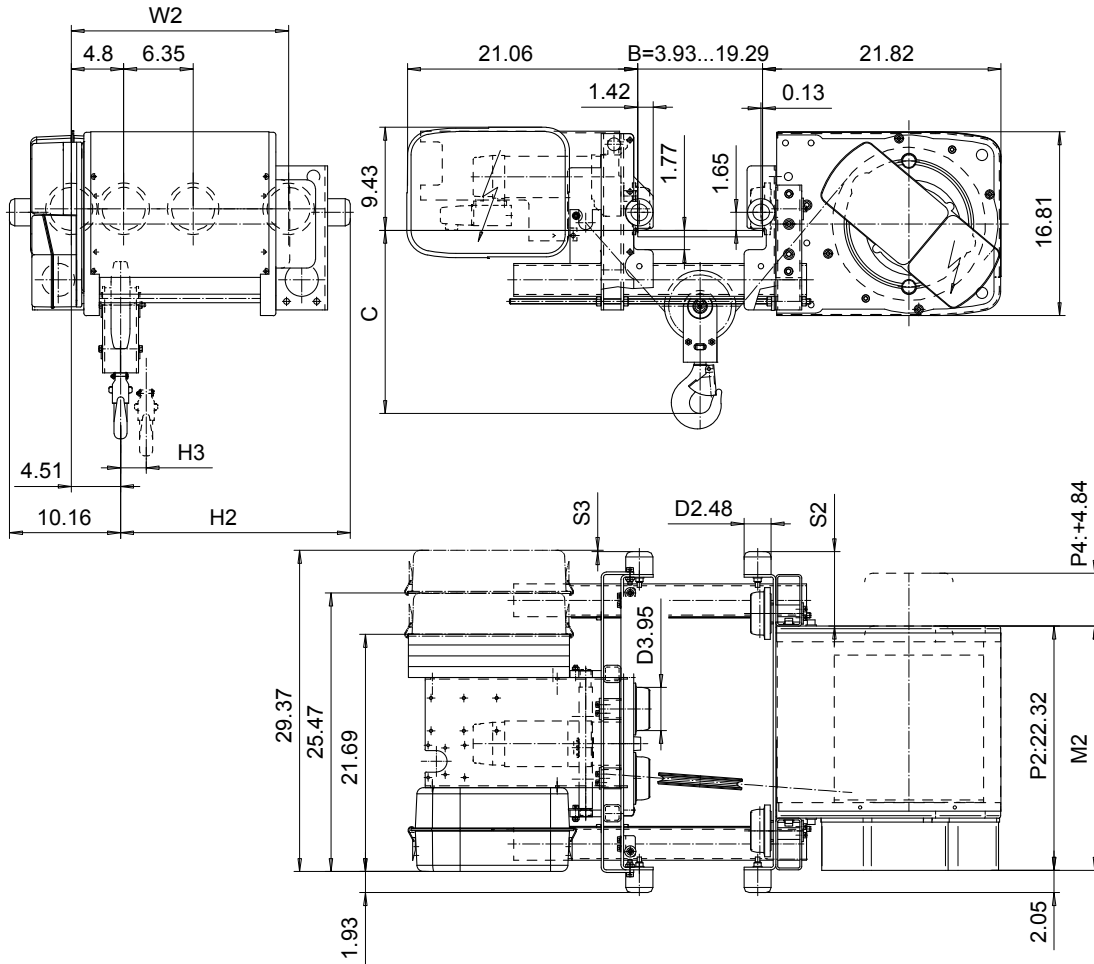


LOW HEADROOM, 2 PART SINGLE (A2), SPECIAL
Hoist type:
SX4 021 (A2)...L0

US-60Hz



Flange Width, B (in)	Headroom, C (in)
3.93 - 9.84	16.2
9.88 - 11.81	17.4
11.85 - 13.78	18.7
13.81 - 15.75	19.9
15.78 - 17.72	21.3
17.75 - 19.3	22.5

Headroom is related to the flange width

Load (TON)	Class ASME	Hoisting speed (ft/min)		
		Gear+ Motor code:		
1	H4+	E+P2	F+P2	H+P4
		30/4.9	40/6.7	60/9.8
1 1/4	H4+	30/4.9	40/6.7	60/9.8
1 1/2	H4	30/4.9	40/6.7	60/9.8
+ weight (lb):		-	-	80

HOL (ft)	Length code	M2 (inch)	H2 (inch)	H3 (inch)	S2 (inch)	S3 (inch)	W2 (inch)	Weight (lb)
73'-9"	C	22.32	21.02	5.66	6.81	0.11	19.88	640
98'-5"	D	26.25	24.96	7.59	10.74	-3.81	23.81	680

This document is the absolute property of R&M Materials Handling, Inc. This document must not be copied without the written permission of R&M Materials Handling, Inc. The contents thereof must not be disclosed to a third party nor be used for any unauthorized purpose. Contravention will be prosecuted.

CSDPAL Design	CSDPAL Title	Appd	Ref Drawing	QB-L-A2
2002-08-28 Date	TROLLEY; LOW HEADROOM			1:1-7.5 Pictorial
SLEQRNG1 Drawn/Dept	2 ROPE FALLS, 1600 kg			
R&M MATERIALS HANDLING, INC. 10011 CASE POINTS SHEPHERD, VA	D002106-A			Drawn 3