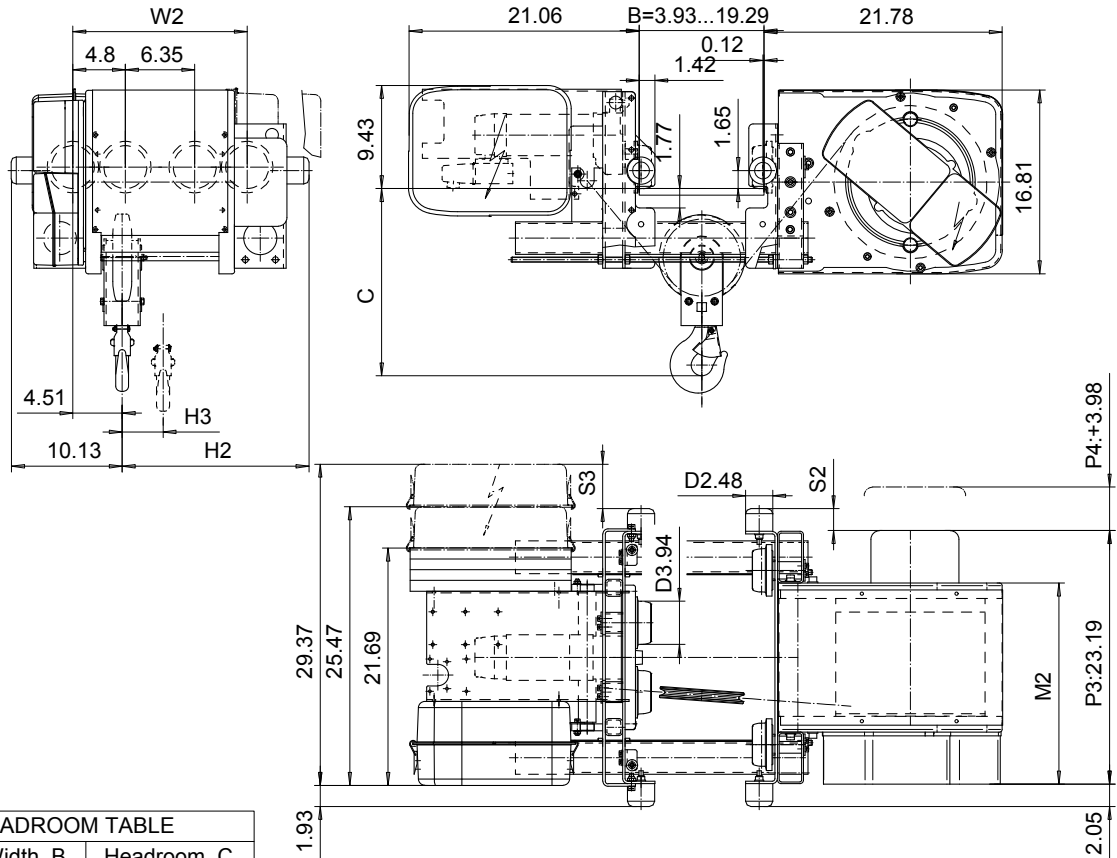


LOW HEADROOM, 2 PART SINGLE
Hoist type:
SX4 021...L0

US-60Hz



HEADROOM TABLE	
Flange Width, B (in)	Headroom, C (in)
3.93 - 9.84	17.3
9.88 - 11.81	18.5
11.85 - 13.78	19.9
13.81 - 15.75	21
15.78 - 17.72	22.5
17.75 - 19.3	23.4

Headroom is related to the flange width

Load (TON)	Class ASME	Hoisting speed (ft/min)		
		Gear+Motor code:		
		E+P3	F+P3	H+P4
1 1/2	H4+	30/4.9	40/6.7	60/9.8
2	H4+	30/4.9	40/6.7	60/9.8
2 1/2	H4	30/4.9	40/6.7	60/9.8
+ weight (lb):		-	-	80

HOL (ft)	Length code	M2 (inch)	H2 (inch)	H3 (inch)	S2 (inch)	S3 (inch)	W2 (inch)	Weight (lb)
39'-4"	B	18.38	17.08	3.74	2.00	3.07	15.94	650
59'-0"	C	22.32	21.02	5.66	5.94	-0.86	19.88	690
78'-8"	D	26.25	24.96	7.59	9.88	-4.80	23.81	730

This document is the absolute property of R&M Materials Handling, Inc. This document must not be copied without the written permission of R&M Materials Handling, Inc. The contents thereof must not be disclosed to a third party nor be used for any unauthorized purpose. Contravention will be prosecuted.

ETFPAL Design	ETFPAL Chd	Appd	Ref Drawing	QB-L-02
2002-08-27 Date	TROLLEY; LOW HEADROOM			1 of 5 Folder
SLEQDOCV Owner Dept	2 ROPE FALLS			
R&M MATERIALS HANDLING, INC. HOIST & CRANE PRODUCTS	D002087-A			Issue 3