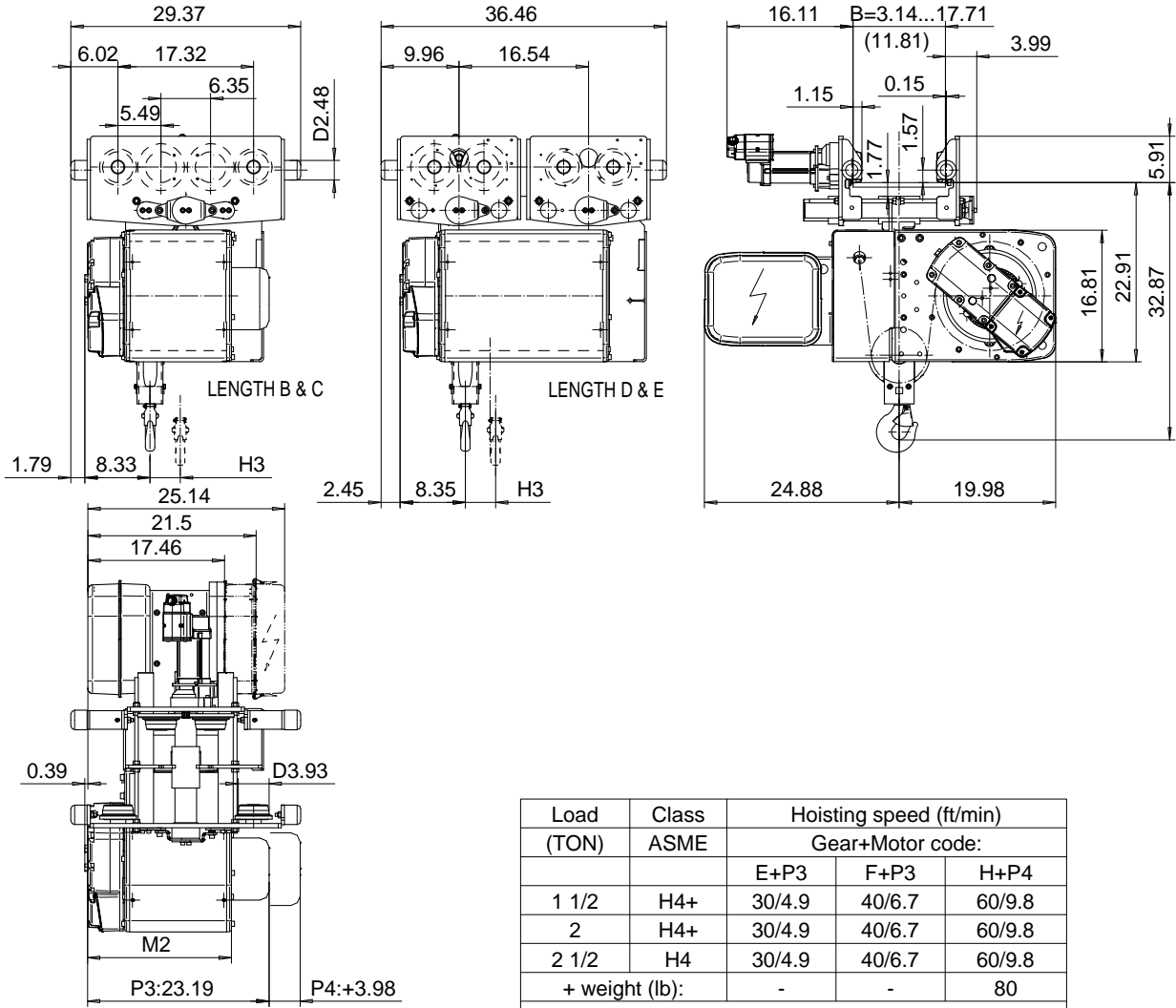


NORMAL HEADROOM, 2 PART SINGLE

Hoist type:

SX4 021...N0

US-60Hz



Load (TON)	Class ASME	Hoisting speed (ft/min)		
		Gear+Motor code:		
		E+P3	F+P3	H+P4
1 1/2	H4+	30/4.9	40/6.7	60/9.8
2	H4+	30/4.9	40/6.7	60/9.8
2 1/2	H4	30/4.9	40/6.7	60/9.8
+ weight (lb):		-	-	80

Note: Weight calculated, when B = 11.81

HOL (ft)	Length code	M2 (inch)	H3 (inch)	Weight (lb)
39'-4"	B	18.38	3.85	650
59'-0"	C	22.32	5.78	690
78'-8"	D	26.25	7.79	810
98'-5"	E	30.98	10.15	850

ETFPAL Design	ETFPAL Chd	Appd	Ref Drawing	QB-N-02
2002-08-27 Date	TROLLEY; NORMAL HEADROOM			1-10
SLEQDOCV Owner Dept	2 ROPE FALLS			Folder
R&M R&M MATERIALS HANDLING, INC. HOIST & GEAR PRODUCTS SHELTON, CT	D002090-A			Issue 3

This document is the absolute property of R&M Materials Handling, Inc. This document must not be copied without the written permission of R&M Materials Handling, Inc. The contents thereof must not be disclosed to a third party nor be used for any unauthorized purpose. Contravention will be prosecuted.