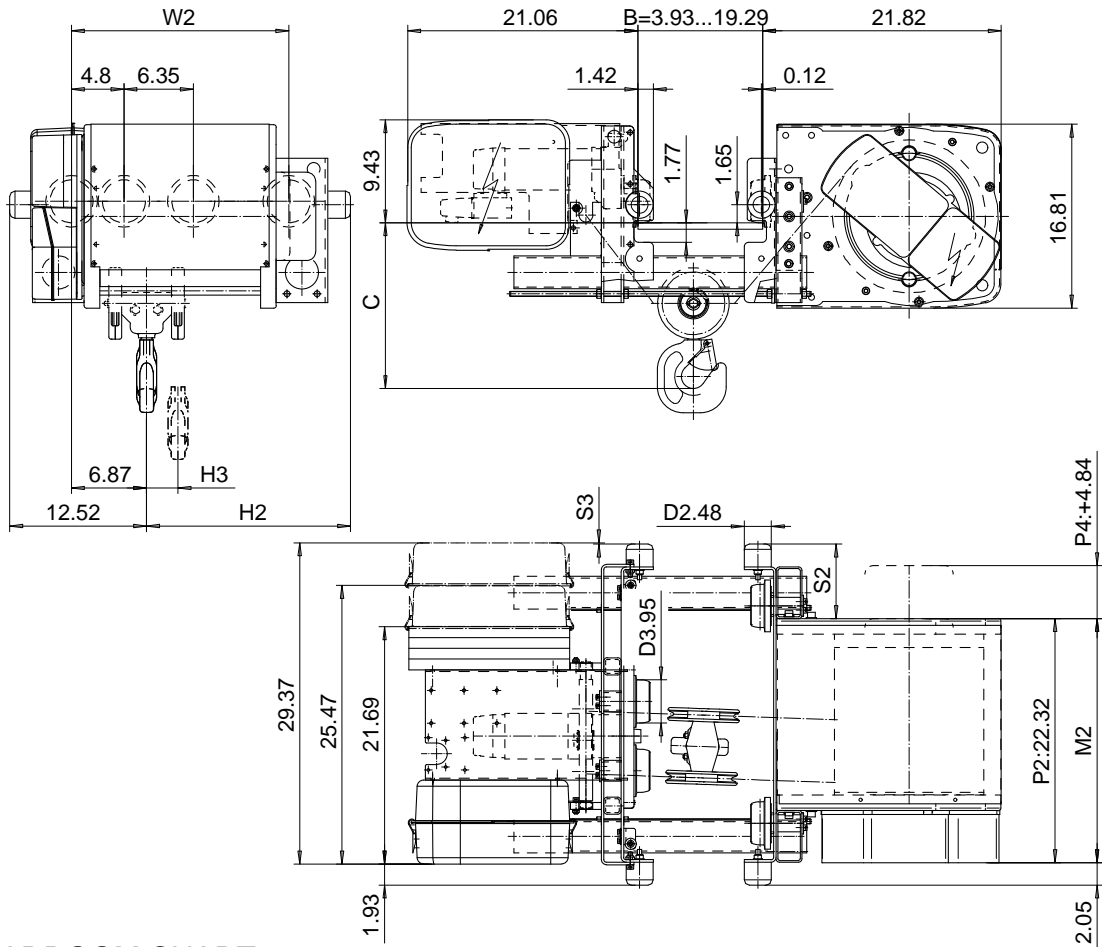


LOW HEADROOM, 4 PART SINGLE (A4), SPECIAL

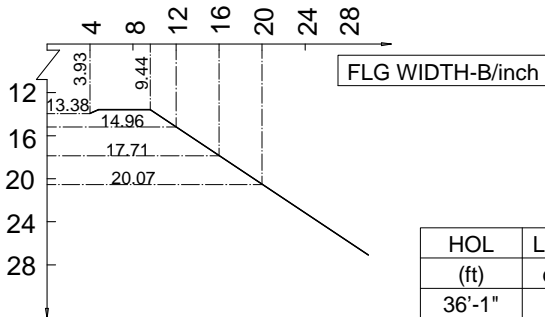
Hoist type:

SX4 041 (A4)...L0

US-60Hz



HEADROOM CHART



HEADROOM-C/inch

Load (T)	Class ASME	Hoisting speed (ft/min)		
		Gear+Motor code:		
		E+P2	F+P2	H+P4
2	H4+	16/2.4	20/3.1	30/4.9
2 1/2	H4+	16/2.4	20/3.1	30/4.9
3	H4	16/2.4	20/3.1	30/4.9
+ weight (lb):		-	-	80

HOL (ft)	Length code	M2 (inch)	H2 (inch)	H3 (inch)	S2 (inch)	S3 (inch)	W2 (inch)	Weight (lb)
36'-1"	C	22.32	18.66	2.87	6.81	0.11	19.88	670
49'-2"	D	26.25	22.59	3.89	10.74	-3.81	23.81	710

This document is the absolute property of R&M Materials Handling, Inc. This document must not be copied without the written permission of R&M Materials Handling, Inc. The contents thereof must not be disclosed to a third party nor be used for any unauthorized purpose. Contravention will be prosecuted.

CSDPAL Design	CSDPAL Title	Appd	Ref Drawing	QB-L-A4
2002-08-28 Date	TROLLEY; LOW HEADROOM			1 of 3 P/100
SLEPQEN01 Owner Dept	4 ROPE FALLS, 3200 kg			
R&M MATERIALS HANDLING, INC. RUST & CORB INDUSTRIES SHEPHERD, PA	D002107-A			Drawn 3