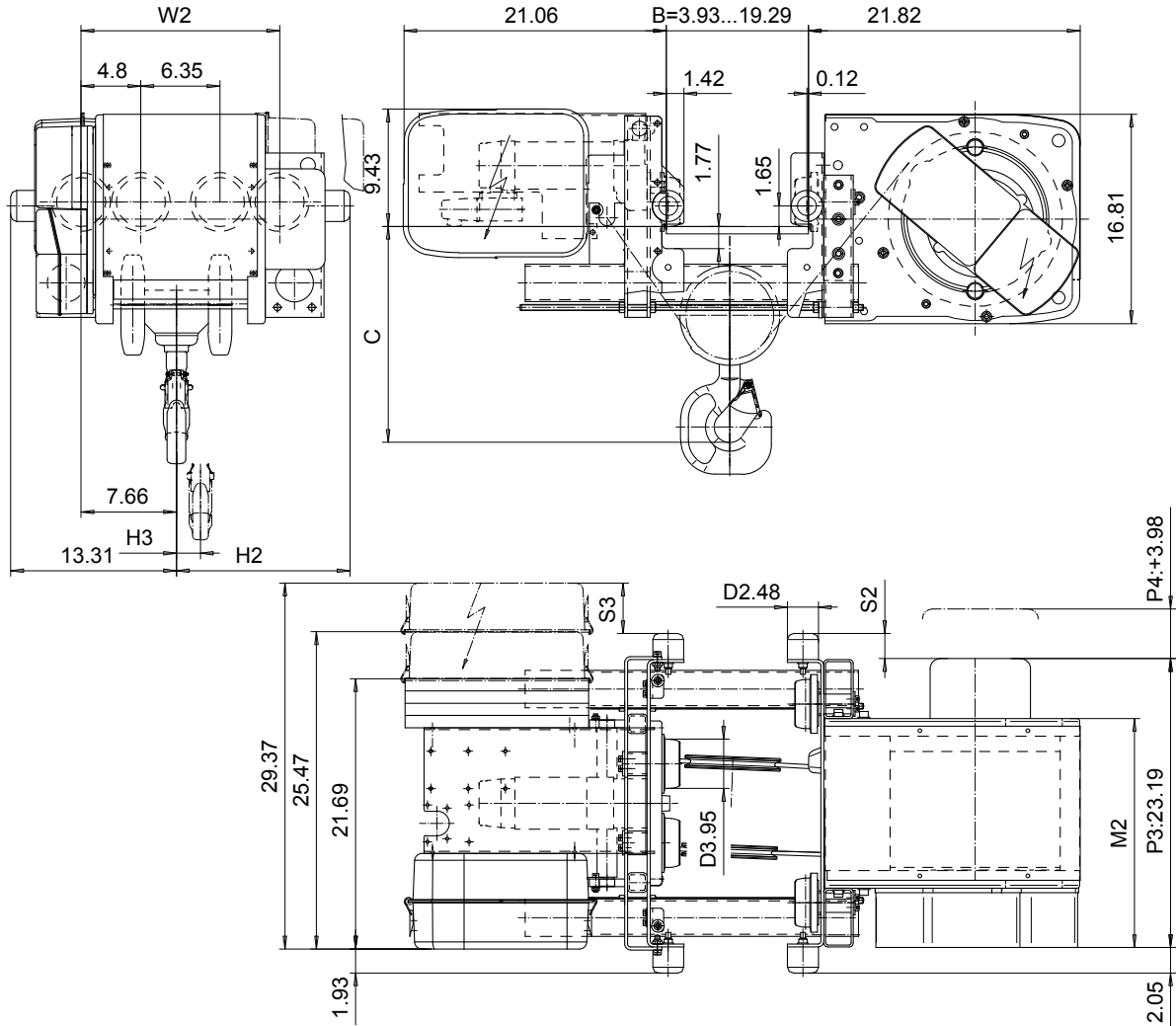


LOW HEADROOM, 4 PART SINGLE

Hoist type:

SX4 041...L0

US-60Hz



HEADROOM TABLE	
Flange Width, B (in)	Headroom, C (in)
3.93 - 9.84	17.3
9.88 - 11.81	18.5
11.85 - 13.78	19.9
13.81 - 15.75	21
15.78 - 17.72	22.5
17.75 - 19.3	23.4

Headroom is related to the flange width

Load (TON)	Class ASME	Hoisting speed (ft/min)		
		Gear+Motor code:		
		E+P3	F+P3	H+P4
3	H4+	16/2.8	20/3.1	30/4.9
4	H4+	16/2.8	20/3.1	30/4.9
5	H4	16/2.8	20/3.1	30/4.9
+ weight (lb):		-	-	80

HOL (ft)	Length code	M2 (inch)	H2 (inch)	H3 (inch)	S2 (inch)	S3 (inch)	W2 (inch)	Weight (lb)
19'-8"	B	18.38	13.93	1.92	2.00	3.07	15.94	660
29'-6"	C	22.32	17.87	2.91	5.94	-0.86	19.88	700
39'-4"	D	26.25	21.81	3.89	9.88	-4.80	23.81	740

This document is the absolute property of R&M Materials Handling, Inc. This document must not be copied without the written permission of R&M Materials Handling, Inc. The contents thereof must not be disclosed to a third party nor be used for any unauthorized purpose. Contravention will be prosecuted.

CSDPAL Design	CSDPAL Title	Appd	Ref Drawing	QB-L-04
2002-08-27 Date	TROLLEY; LOW HEADROOM			1 of 2 PAGES
SLE/ENG1 Drawn/Eng	4 ROPE FALLS			
R&M MATERIALS HANDLING, INC. EQUIPMENT DIVISION SHEWAN/UPONOR	D002092-A			3