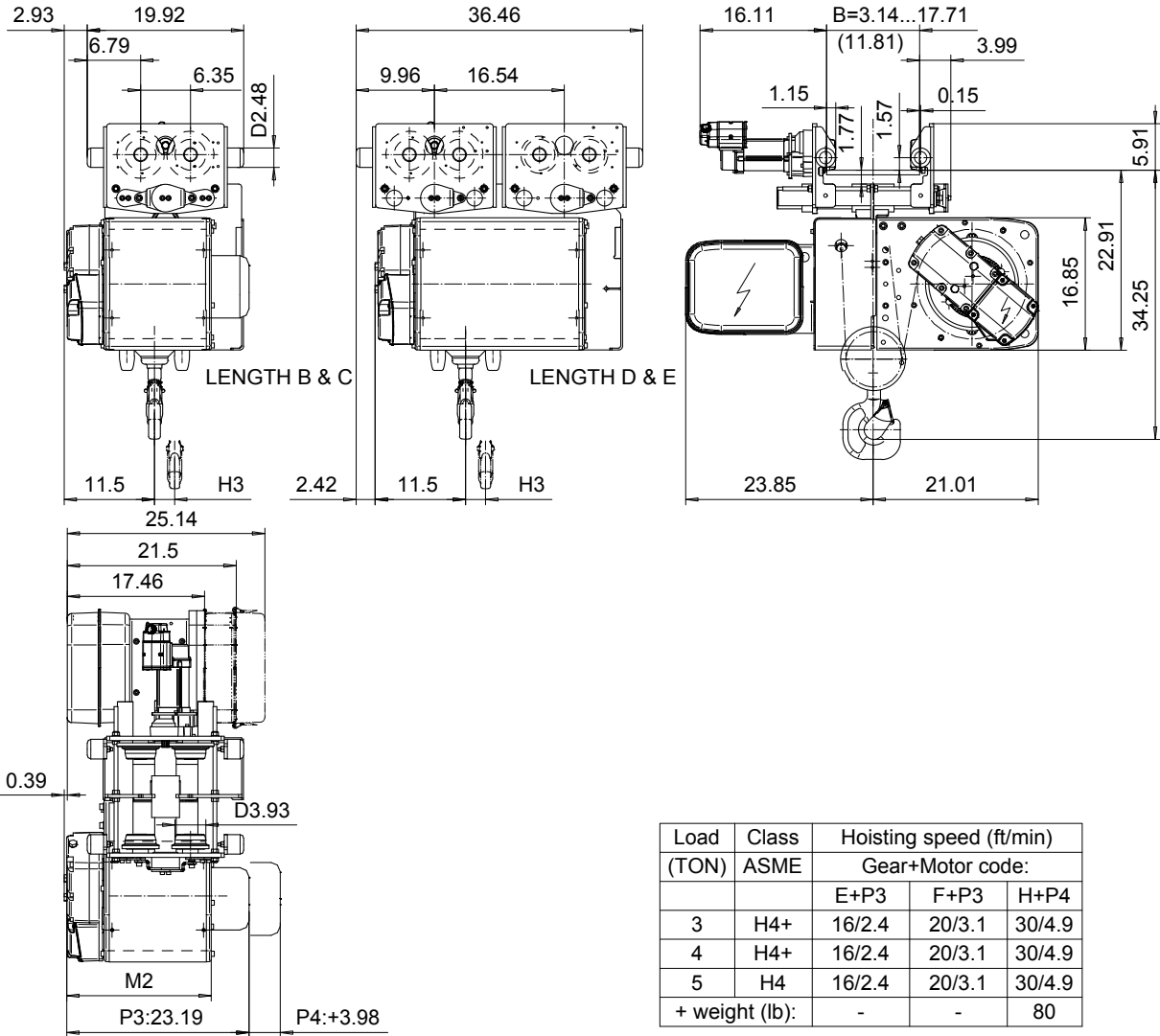


**NORMAL HEADROOM, 4 PART SINGLE**  
**Hoist type:**  
**SX4 041...N0**

**US-60Hz**



Load (TON)	Class ASME	Hoisting speed (ft/min)		
		Gear+Motor code:		
		E+P3	F+P3	H+P4
3	H4+	16/2.4	20/3.1	30/4.9
4	H4+	16/2.4	20/3.1	30/4.9
5	H4	16/2.4	20/3.1	30/4.9
+ weight (lb):		-	-	80

HOL (ft)	Length code	M2 (inch)	H3 (inch)	Weight (lb)
19'-8"	B	18.38	1.92	660
29'-6"	C	22.32	2.87	700
39'-4"	D	26.25	3.81	820
49'-2"	E	30.98	4.76	860

This document is the absolute property of R&M Materials Handling, Inc. This document must not be copied without the written permission of R&M Materials Handling, Inc. The contents thereof must not be disclosed to a third party nor be used for any unauthorized purpose. Contravention will be prosecuted.

ETFPAL Design	ETFPAL Chd	Appd	Ref Drawing	QB-N-04
2002-08-28 Date	TROLLEY; NORMAL HEADROOM			1:10 Folder
SLEQDCV Owner Dept	4 ROPE FALLS			
R&M MATERIALS HANDLING, INC. HOIST & CRANE PRODUCTS SHEWAN/UNION INDUSTRIAL, OHIO	D002097-A			Issue 3