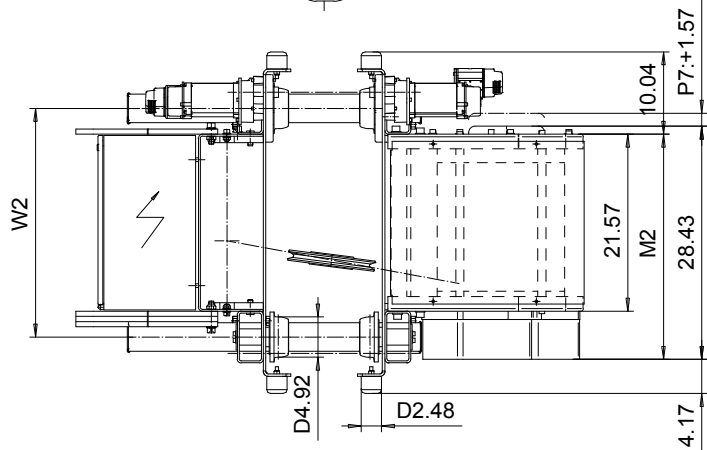
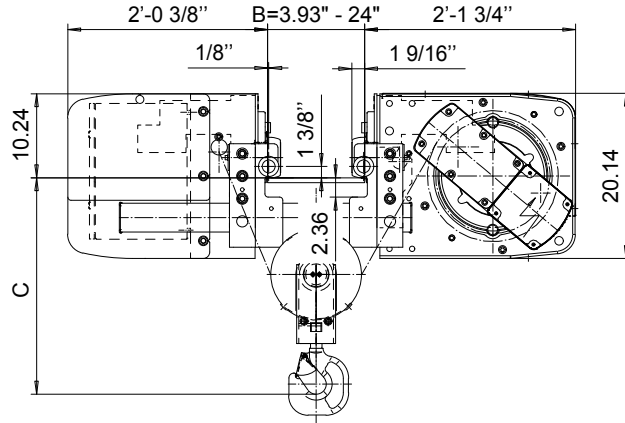
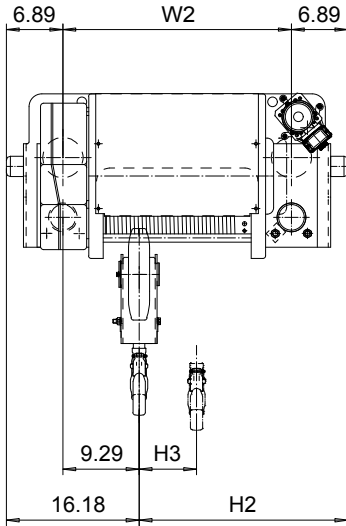


LOW HEADROOM, 2 PART SINGLE

Hoist type:

SX5 021...L0

US-60Hz



Flange Width, B (in)	Headroom, C (in)
3.93 - 7.83	24.8
7.87 - 10.19	23.6
10.23 - 17.32	22.8
17.36 - 21.26	25.2
21.69 - 24	26.8

Headroom is related to the flange width

Load (lb)	Class ASME	Hoisting speed (ft/min)			
		Gear+Motor code:			
		E+P5	F+P5	H+P6	J+P7
4	H4+	30/4.9	40/6.7	60/9.8	80/12.5
5	H4	30/4.9	40/6.7	60/9.8	80/12.5
+ weight (lb):		-	-	120	160

HOL (ft)	Length code	M2 (inch)	H2 (inch)	H3 (inch)	W2 (inch)	Weight (lb)
59'-0"	D	27.44	25.47	6.92	27.87	1499
78'-8"	E	32.16	30.19	9.25	32.59	1598
104'-11"	F	38.07	36.10	12.16	38.50	1708

This document is the absolute property of R&M Materials Handling, Inc. This document must not be copied without the written permission of R&M Materials Handling, Inc. The contents thereof must not be disclosed to a third party nor be used for any unauthorized purpose. Contravention will be prosecuted.

ETFPAL Design	ETFPAL Chd	Appd	Ref Drawing	QC-L-02
2002-08-29 Date	TROLLEY; LOW HEADROOM			1:10 Folder
SLEGRON Owner Dept	2 ROPE FALLS			Issue
R&M MATERIALS HANDLING, INC. HOIST & CRANE PRODUCTS SHERBOURNE, ONT.	D002112-A			4