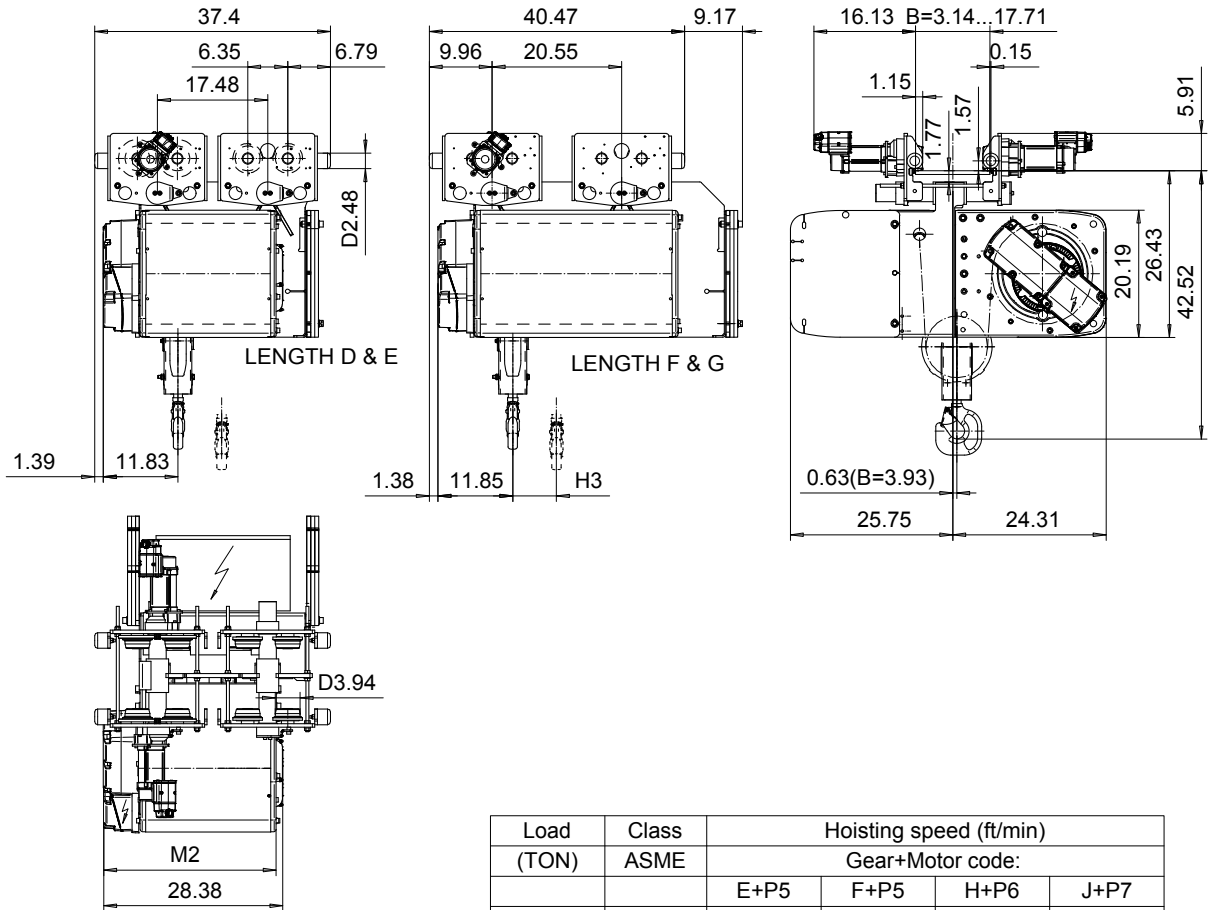


NORMAL HEADROOM, 2 PART SINGLE

Hoist type:
SX5 021...N0

US-60Hz



Load (TON)	Class ASME	Hoisting speed (ft/min)			
		Gear+Motor code:			
		E+P5	F+P5	H+P6	J+P7
4	H4+	30/4.9	40/6.7	60/9.8	80/12.5
5	H4	30/4.9	40/6.7	60/9.8	80/12.5
+ weight (lb):		-	-	120	160

HOL (ft)	Length code	M2 (inch)	H3 (inch)	Weight (lb)
59'-0"	D	27.44	6.92	1110
78'-8"	E	32.16	9.25	1210
104'-11"	F	38.07	12.16	1320
131'-2"	G	45.55	15.86	1420

This document is the absolute property of R&M Materials Handling, Inc. This document must not be copied without the written permission of R&M Materials Handling, Inc. The contents thereof must not be disclosed to a third party nor be used for any unauthorized purpose. Contravention will be prosecuted.

ETFPAL Design	ETFPAL Chd	Appd	Ref Drawing	QC-N-02
2002-08-29 Date	TROLLEY; NORMAL HEADROOM			1 of 15 Folder
SLEQDCV Owner Dept	2 ROPE FALLS			
R&M MATERIALS HANDLING, INC. HOIST & CRANE PRODUCTS SERRAVALLO, OHIO	D002114-A			Issue 3