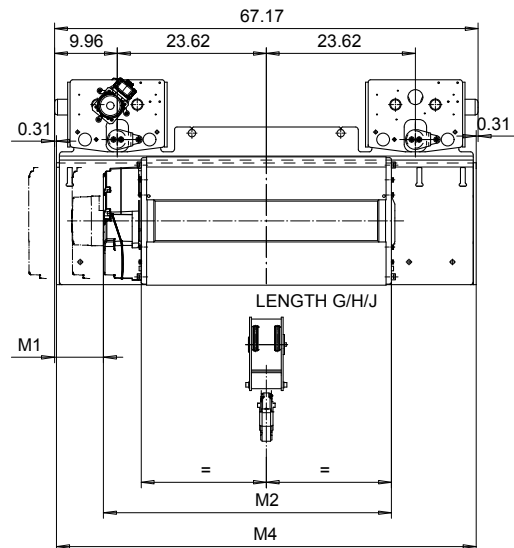
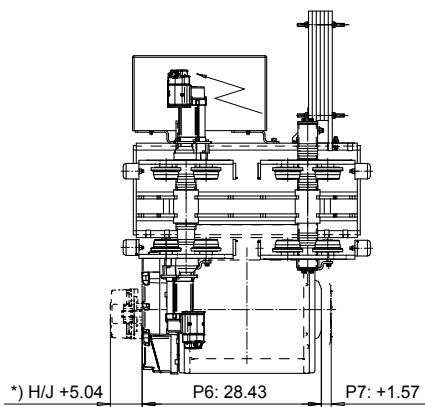
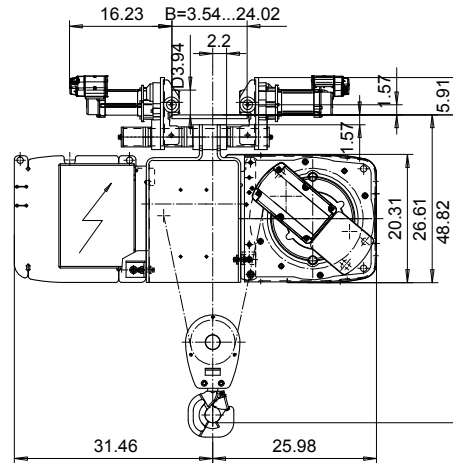
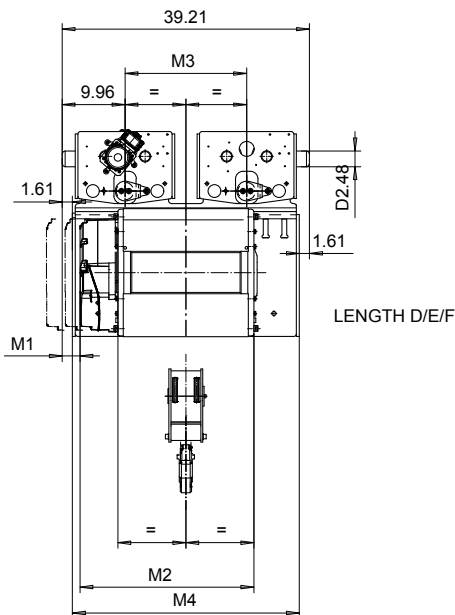


NORMAL HEADROOM, 2 PART DOUBLE

Hoist type:

SX5022...N0

US-60Hz



Load (TON)	Class ASME	Hoisting speed (ft/min)			
		Gear+Motor code:			
		E+P5	F+P5	H+P6	J+P7
4	H4+	30/4.9	40/6.7	60/9.8	80/12.5
5	H4	30/4.9	40/6.7	60/9.8	80/12.5
+ weight (lb):		-	-	120	160

HOL (ft)	Length code	M1 (inch)	M2 (inch)	M3 (inch)	M4 (inch)	Weight (lb)
27'-10"	D	2.83	27.44	19.29	35.98	1700
42'-7"	E	0.47	32.16	19.29	35.98	1740
59'-0"	F	- 2.48	38.07	19.29	35.98	1790
82'-0"	G	7.75	45.55	47.24	66.53	2270
109'-10"	H	2.83	55.39	47.24	66.53	2360
150'-11"	J	- 4.05	69.17	47.24	66.53	2470

Note:
Weight calculated with P5, when B=11.81

Note:
*) Gear brake as standard brake for drum lengths H and J

This document is the absolute property of R&M Materials Handling, Inc. This document must not be copied without the written permission of R&M Materials Handling, Inc. The contents thereof must not be disclosed to a third party nor be used for any unauthorized purpose. Contravention will be prosecuted.

ETVPH Design 2004-04-27 Date	ETVPH Chd Appd	Ref Drawing	QC-N-22
SLEQDCV Owner Dept	TROLLEY; NORMAL HEADROOM 2x2 ROPE FALLS		1 of 15 Folder
R&M R&M MATERIALS HANDLING, INC. HOIST & CRANE PRODUCTS SHEPHERDVILLE, OHIO	D003134-A		Issue 3