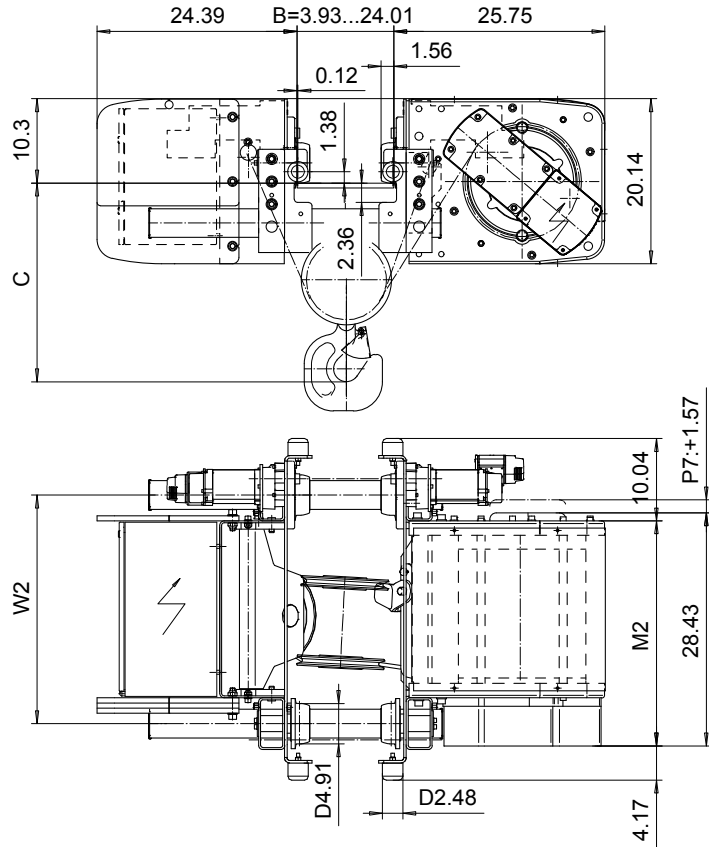
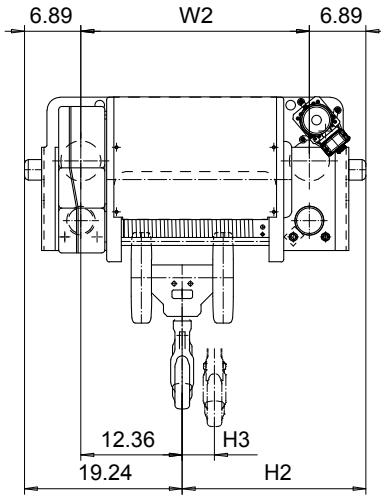


LOW HEADROOM, 4 PART SINGLE
Hoist type:
SX5 041...L0

US-60Hz



HEADROOM TABLE	
Flange Width, B (in)	Headroom, C (in)
3.93 - 7.83	24
7.87 - 10.19	22.6
10.23 - 17.32	20.9
17.36 - 21.26	23.5
21.69 - 24	25.6

Headroom is related to the flange width

Load (TON)	Class ASME	Hoisting speed (ft/min)			
		Gear+Motor code:			
		E+P5	F+P5	H+P6	J+P7
6	H4+	16/2.4	20/3.1	30/4.9	40/6.7
7 1/2	H4+	16/2.4	20/3.1	30/4.9	40/6.7
10	H4	16/2.4	20/3.1	30/4.9	40/6.7
+ weight (lb):		-	-	120	160

HOL (ft)	Length code	M2 (inch)	H2 (inch)	H3 (inch)	W2 (inch)	Weight (lb)
29'-6"	D	27.44	22.40	3.46	27.87	1120
39'-4"	E	32.16	27.12	4.64	32.59	1320
52'-5"	F	38.07	33.03	6.14	38.50	1420

This document is the absolute property of R&M Materials Handling, Inc. This document must not be copied without the written permission of R&M Materials Handling, Inc. The contents thereof must not be disclosed to a third party nor be used for any unauthorized purpose. Contravention will be prosecuted.

ETFPAL Design	ETFPAL Chd	Appd	Ref Drawing	QC-L-04
2002-08-29 Date	TROLLEY; LOW HEADROOM			 3 of 0 Folder
SLEQDOCV Owner Dept	4 ROPE FALLS			
R&M MATERIALS HANDLING, INC. HOIST & CRANE PRODUCTS	D002117-A			Issue 4