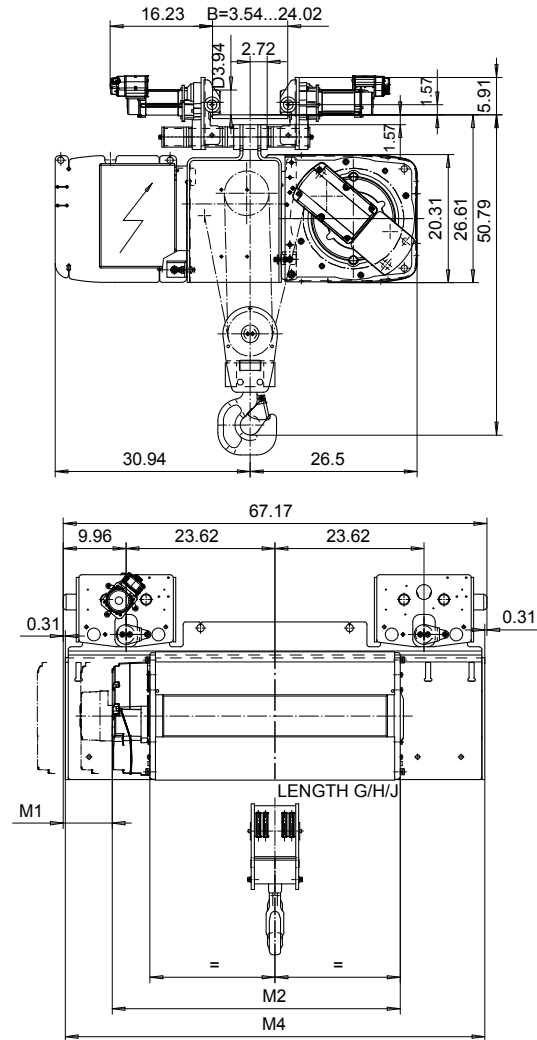
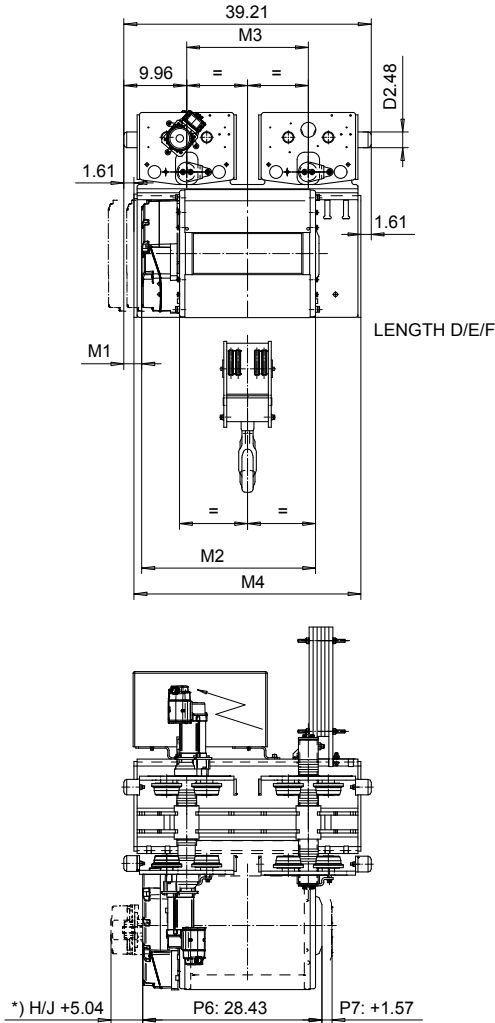


NORMAL HEADROOM, 4 PART DOUBLE
 Hoist type:
 SX5042...N0

US-60Hz



Load (TON)	Class ASME	Hoisting speed (ft/min)			
		Gear+Motor code:			
		E+P5	F+P5	H+P6	J+P7
6	H4+	16/2.4	20/3.1	30/4.9	40/6.7
7 1/2	H4+	16/2.4	20/3.1	30/4.9	40/6.7
10	H4	16/2.4	20/3.1	30/4.9	40/6.7
+ weight (lb):		-	-	120	160

Note:
 Weight calculated with P5, when B=11.81

HOL (ft)	Length code	M1 (inch)	M2 (inch)	M3 (inch)	M4 (inch)	Weight (lb)
13'-1"	D	2.83	27.44	19.29	35.98	1740
21'-4"	E	0.47	32.16	19.29	35.98	1760
29'-6"	F	- 2.48	38.07	19.29	35.98	1830
41'-0"	G	7.75	45.55	47.24	66.53	2310
54'-1"	H	2.83	55.39	47.24	66.53	2380
75'-5"	J	- 4.05	69.17	47.24	66.53	2490

Note:
 *) Gear brake as standard brake for drum lengths H and J

This document is the absolute property of R&M Materials Handling, Inc. This document must not be copied without the written permission of R&M Materials Handling, Inc. The contents thereof must not be disclosed to a third party nor be used for any unauthorized purpose. Contravention will be prosecuted.

ETTPH Design	ETTPH Chd	Appd	Ref Drawing	QC-N-24
2004-04-27 Date	TROLLEY; NORMAL HEADROOM			1 of 15
SLEQDCV Owner Dept	2x4 ROPE FALLS			Folder
R&M MATERIALS HANDLING, INC. HOIST & CRANE PRODUCTS SERRAVALLO, OHIO	D003135-A			Issue 3