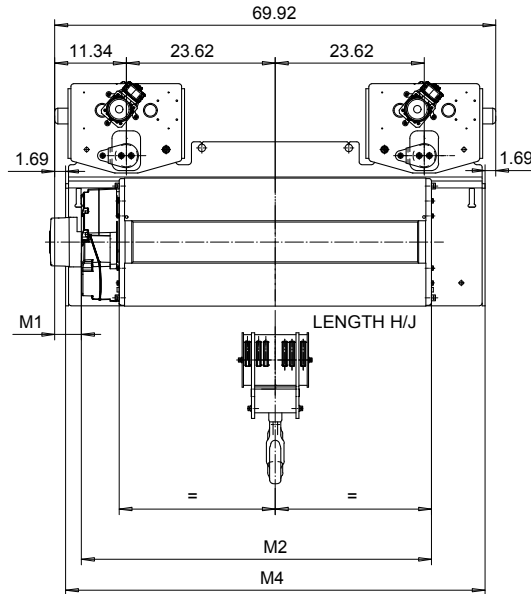
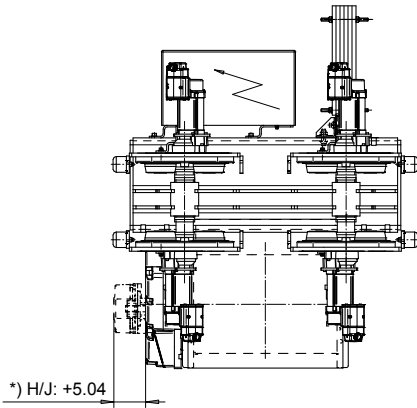
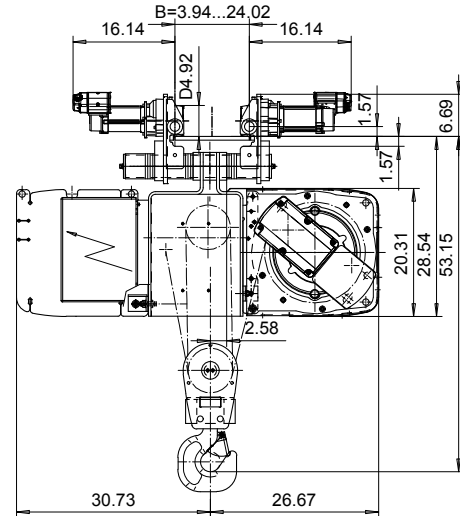
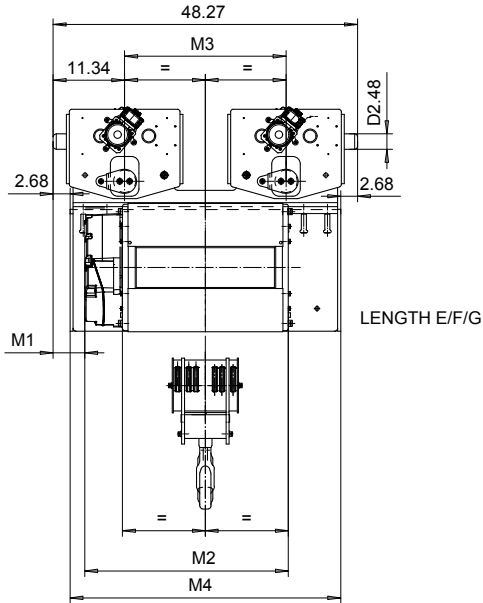


NORMAL HEADROOM, 6 PART DOUBLE  
 Hoist type:  
 SX5062...N0

US-60Hz



Load (TON)	Class ASME	Hoisting speed (ft/min)		
		Gear+Motor code:		
		F+P5	H+P6	J+P7
12	H4+	12.5/1.9	20/3.1	25/3.9
15	H4	12.5/1.9	20/3.1	25/3.9
+ weight (lb):		-	120	160

Note:  
 Weight calculated with P5, when B=11.81

HOL (ft)	Length code	M1 (inch)	M2 (inch)	M3 (inch)	M4 (inch)	Weight (lb)
13'-1"	E	5	32.16	25.59	42.91	2070
19'-8"	F	2.04	38.07	25.59	42.91	2140
26'-2"	G	- 1.69	45.55	25.59	42.91	2270
36'-1"	H	4.21	55.39	47.24	66.53	2690
49'-2"	J	- 2.67	69.17	47.24	66.53	2870

Note:  
 \*) Gear brake as standard brake for drum lengths H and J

This document is the absolute property of R&M Materials Handling, Inc. This document must not be copied without the written permission of R&M Materials Handling, Inc. The contents thereof must not be disclosed to a third party nor be used for any unauthorized purpose. Contravention will be prosecuted.

ETVPH Design	ETVPH Chk	Appd	Ref Drawing	QC-N-26
2004-04-27 Date	TROLLEY; NORMAL HEADROOM			1 of 15 Folder
SLEQDCV Owner Dept	2x6 ROPE FALLS			
R&M MATERIALS HANDLING, INC. HOIST & CRANE PRODUCTS SHEPHERDVILLE, OHIO	D003136-A			Issue 4