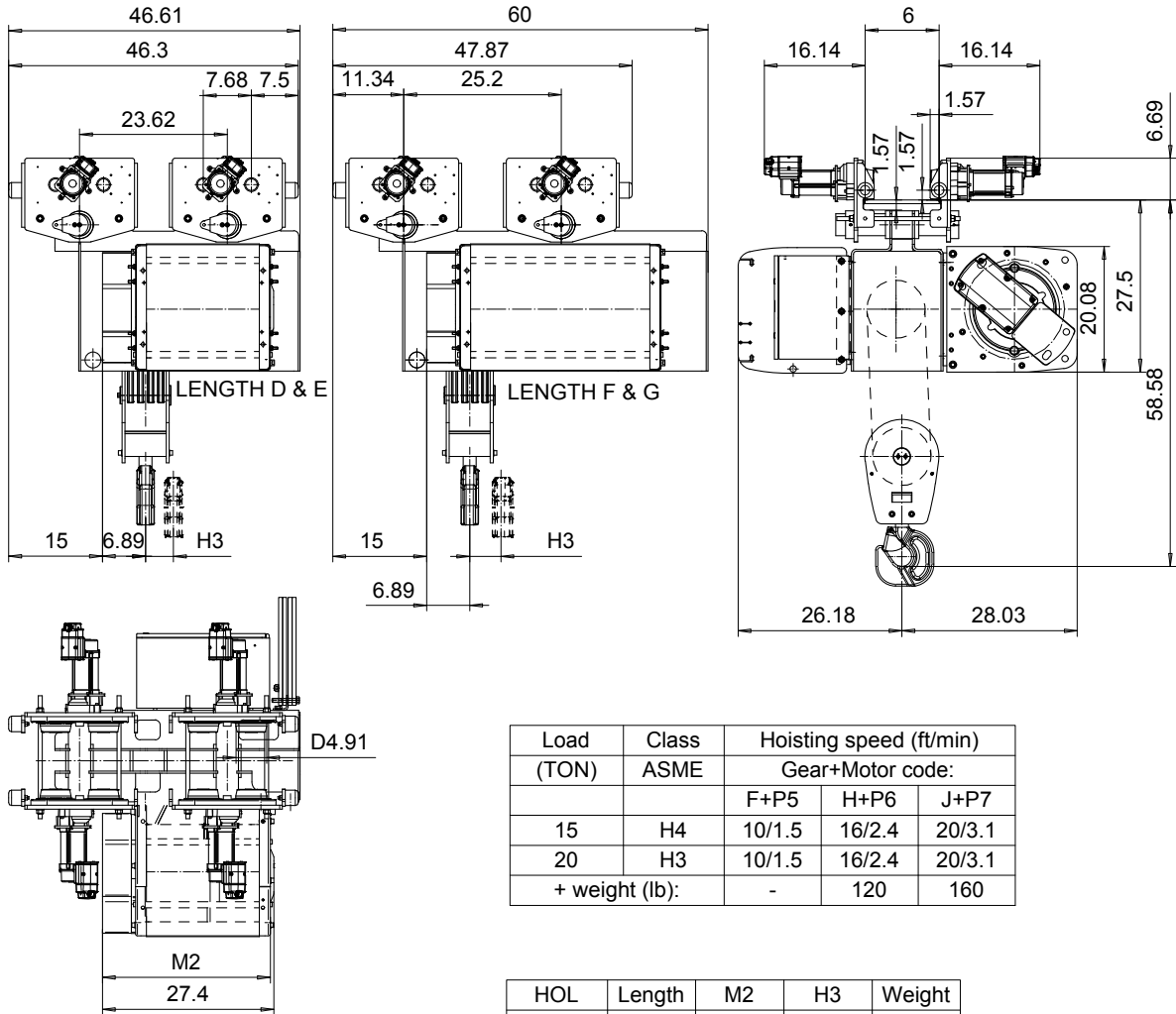


**NORMAL HEADROOM, 8 PART SINGLE**  
**Hoist type:**  
**SX5 081...N0**

**US-60Hz**



Load (TON)	Class ASME	Hoisting speed (ft/min)		
		Gear+Motor code:		
		F+P5	H+P6	J+P7
15	H4	10/1.5	16/2.4	20/3.1
20	H3	10/1.5	16/2.4	20/3.1
+ weight (lb):		-	120	160

HOL (ft)	Length code	M2 (inch)	H3 (inch)	Weight (lb)
14'-9"	D	26.85	1.73	1626
19'-8"	E	31.57	2.08	1660
26'-2"	F	37.48	2.99	1812
32'-9"	G	44.96	3.85	1860

This document is the absolute property of R&M Materials Handling, Inc. This document must not be copied without the written permission of R&M Materials Handling, Inc. The contents thereof must not be disclosed to a third party nor be used for any unauthorized purpose. Contravention will be prosecuted.

ETFPAL Design	ETFPAL Chd	Appd	Ref Drawing	QC-N-08
2002-08-30 Date	TROLLEY; NORMAL HEADROOM			1 of 15 Folder
SLEQDCV Owner Dept	8 ROPE FALLS			
R&M MATERIALS HANDLING, INC. HOIST & CRANE PRODUCTS	J28978 Approval Drawing			Issue 3