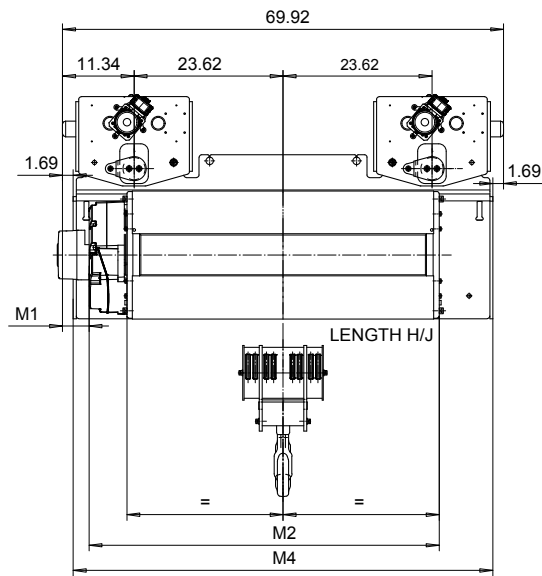
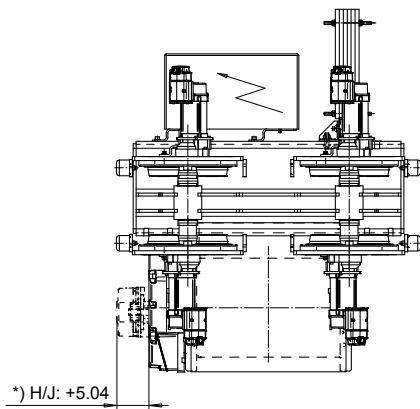
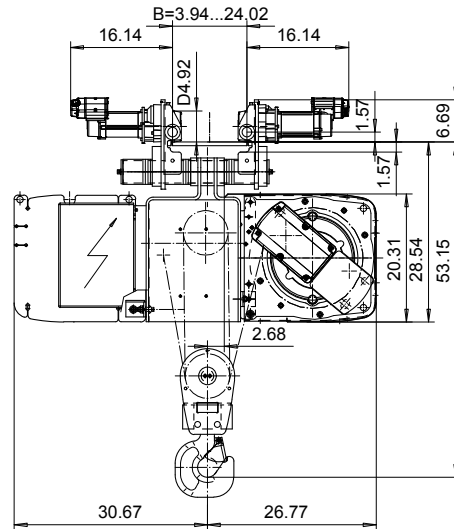
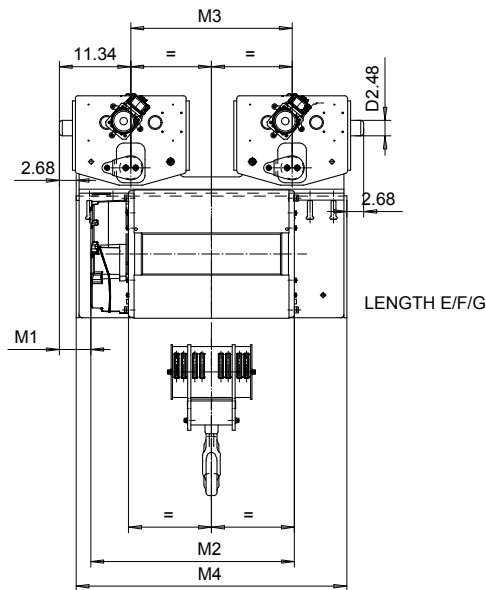


**NORMAL HEADROOM, 8 PART DOUBLE**  
**Hoist type:**  
**SX5082...N0**

**US-60Hz**



Load (TON)	Class ASME	Hoisting speed (ft/min)		
		Gear+Motor code:		
		F+P5	H+P6	J+P7
15	H4	10/1.5	16/2.4	20/3.1
20	H3	10/1.5	16/2.4	20/3.1
+ weight (lb):		-	120	160

HOL (ft)	Length code	M1 (inch)	M2 (inch)	M3 (inch)	M4 (inch)	Weight (lb)
14'-9"	F	2.04	38.07	25.59	42.91	2180
26'-2"	G	- 1.69	45.55	25.59	42.91	2290
36'-1"	H	4.21	55.39	47.24	66.53	2710
49'-2"	J	- 2.67	69.17	47.24	66.53	2910

Note:  
 Weight calculated with P5, when B=11.81

Note:  
 \*) Gear brake as standard brake for drum lengths H and J

This document is the absolute property of R&M Materials Handling, Inc. This document must not be copied without the written permission of R&M Materials Handling, Inc. The contents thereof must not be disclosed to a third party nor be used for any unauthorized purpose. Contravention will be prosecuted.

ETTVPH Design	ETTVPH Chd	Appd	Ref Drawing	QC-N-28
2004-04-27 Date	TROLLEY; NORMAL HEADROOM			1 of 15 Folder
SLEQDCV Owner Dept	2x8 ROPE FALLS			
R&M MATERIALS HANDLING, INC. HOIST & CRANE PRODUCTS	D003137-A			Issue 3