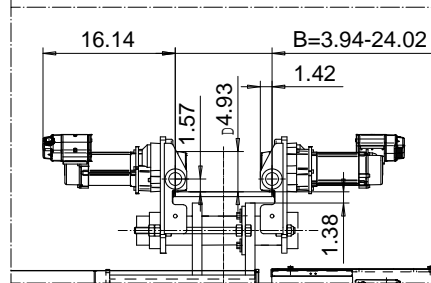
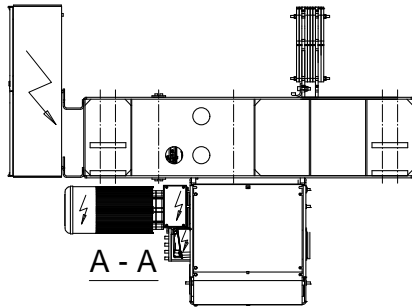
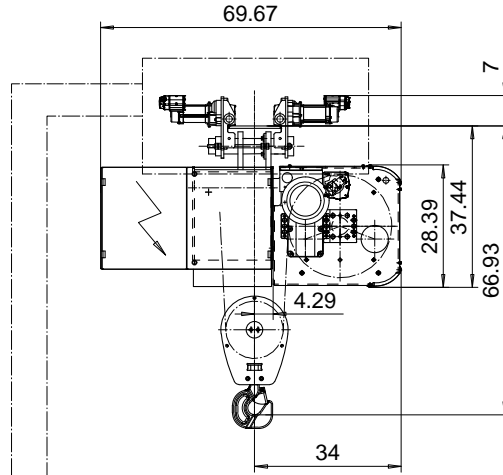
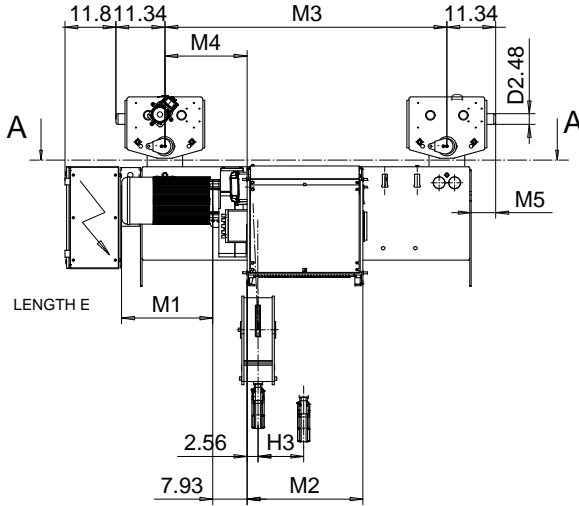
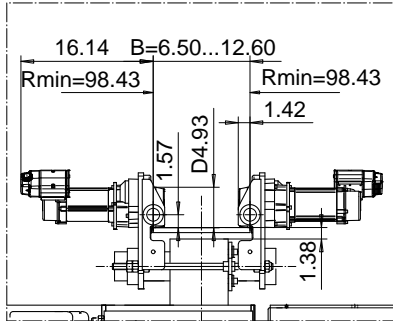


NORMAL HEADROOM, 2 PART SINGLE
Hoist type:
SX6 021...N0

US-60Hz



OPTION: CURVED TRACK SUSPENSION



Motor	P6,T6,T7,T8,T9	P7,TA	P8
M1 (inch)	21.10	22.67	27.99

HOL (ft)	Length code	M2 (inch)	M3 (inch)	M4 (inch)	M5 (inch)	H3 (inch)	Weight (lb)
50'- 10"	C	18.18	47.24	19.06	5.71	5.47	3475
68'- 10"	D	22.12	47.24	19.06	5.71	7.40	3525
91'- 10"	E	26.85	65.35	19.06	5.71	9.88	3850
118'- 1"	F	32.75	65.35	19.06	5.71	12.67	4075
154'- 2"	G	40.23	65.35	19.06	5.71	16.57	4400
200'- 1"	H	50.07	78.74	22.60	-10.63	21.49	4950
264'- 1"	J	63.85	78.74	22.60	-10.63	28.38	5625
318'- 2"	K	75.66	78.74	22.60	-10.63	34.17	6050

Note: Weight when B = 12"

Load (TON)	Class ASME	Hoisting motor					
		Hoisting speed (ft/min): Gear code					
		30/4.9:E	40/6.7:F	50/7.8:G	60:H	80:J	
6	H4+	P6,T6	P6,T6	P7,T7	T8	T9	
7 1/2	H4	P6,T6	P6,T6	P7,T7	T8	T9	
10	H3	P6,T6	P7,T7	P8,T8	T9	TA	

This document is the absolute property of R&M Materials Handling, Inc. This document must not be copied without the written permission of R&M Materials Handling, Inc. The contents thereof must not be disclosed to a third party nor be used for any unauthorized purpose. Contravention will be prosecuted.

ETVPH Design	ETTFAL Chd	Appd	Ref Drawing	QD-N-02
2003-09-03 Date	TROLLEY; NORMAL HEADROOM			1 of 19 Folder
SLEQDOCV Owner Dept	2 ROPE FALLS			
R&M MATERIALS HANDLING, INC. ELECT & CRANE PRODUCTS SHELTON, CT	D002692-A			Issue 3