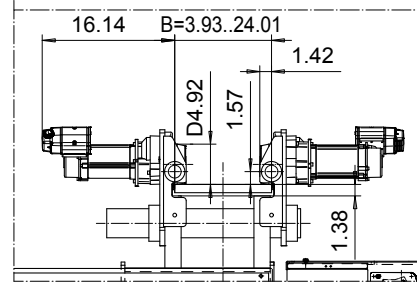
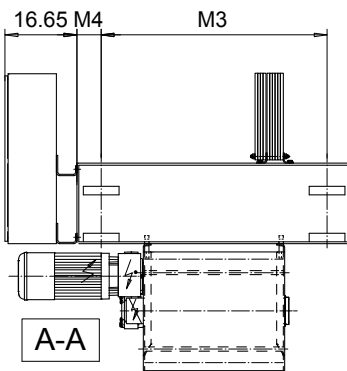
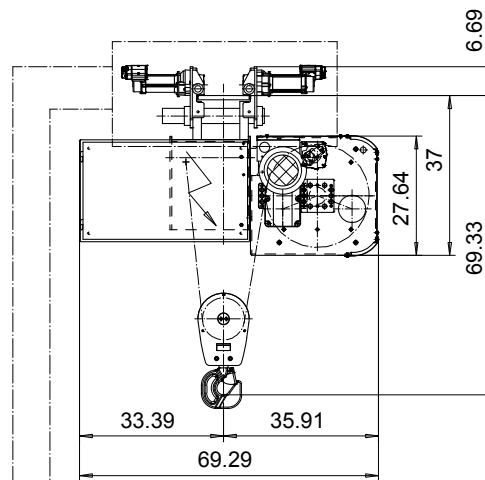
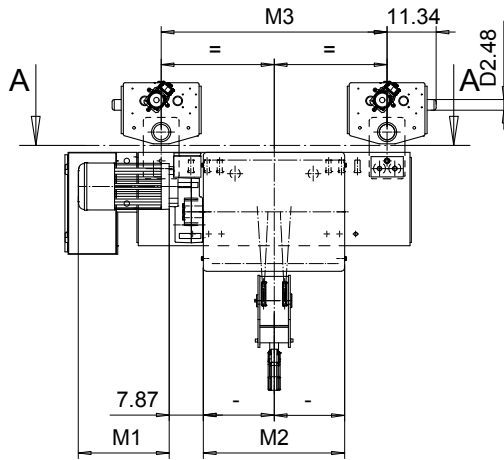
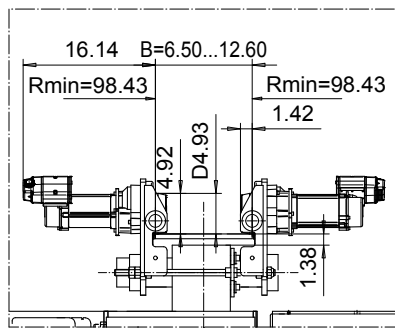


NORMAL HEADROOM, 2 PART DOUBLE
Hoist type:
SX6 022...N0

US-60Hz



OPTION: CURVED TRACK SUSPENSION



Motor	P6,T6,T7,T8,T9	P7,TA	P8
M1 (inch)	21.10	22.67	27.99

HOL (ft)	Length code	M2 (inch)	M3 (inch)	M4 (inch)	Weight (lb)
54'-2"	E	26.85	52.36	5.71	3200
72'-2"	F	32.75	52.36	5.71	3400
96'-9"	G	40.23	52.36	5.71	3600
127'-11"	H	50.07	75.98	5.71	4000
170'-7"	J	63.85	75.98	5.71	4500
208'-4"	K	75.66	52.36	20.87	4900
252'-7"	L	89.44	52.36	20.87	5600
283'-10"	M	99.29	52.36	31.69	6000
321'-6"	N	111.10	52.36	31.69	6500

Note: Weight when B = 12"

Load (TON)	Class ASME	Hoisting motor				
		Hoisting speed (ft/min): Gear code				
		30/4.9: E	40/6.7: F	50/7.8: G	60: H	80: J
6	H4+	P6,T6	P6,T6	P7,T7	T8	T9
7 1/2	H4	P6,T6	P6,T6	P7,T7	T8	T9
10	H3	P6,T6	P7,T7	P8,T8	T9	TA

This document is the absolute property of R&M Materials Handling, Inc. This document must not be copied without the written permission of R&M Materials Handling, Inc. The contents thereof must not be disclosed to a third party nor be used for any unauthorized purpose. Contravention will be prosecuted.

CSDTLI Design	KHHMKKH Chd	Appd	Ref Drawing	QD-N-22
2003-04-15 Date	TROLLEY; NORMAL HEADROOM			1 of 19
SLEQDOCV Owner Dept	2X2 ROPE FALLS			Folder
R&M R&M MATERIALS HANDLING, INC. HOIST & CRANE PRODUCTS	D002535-A			Issue 3