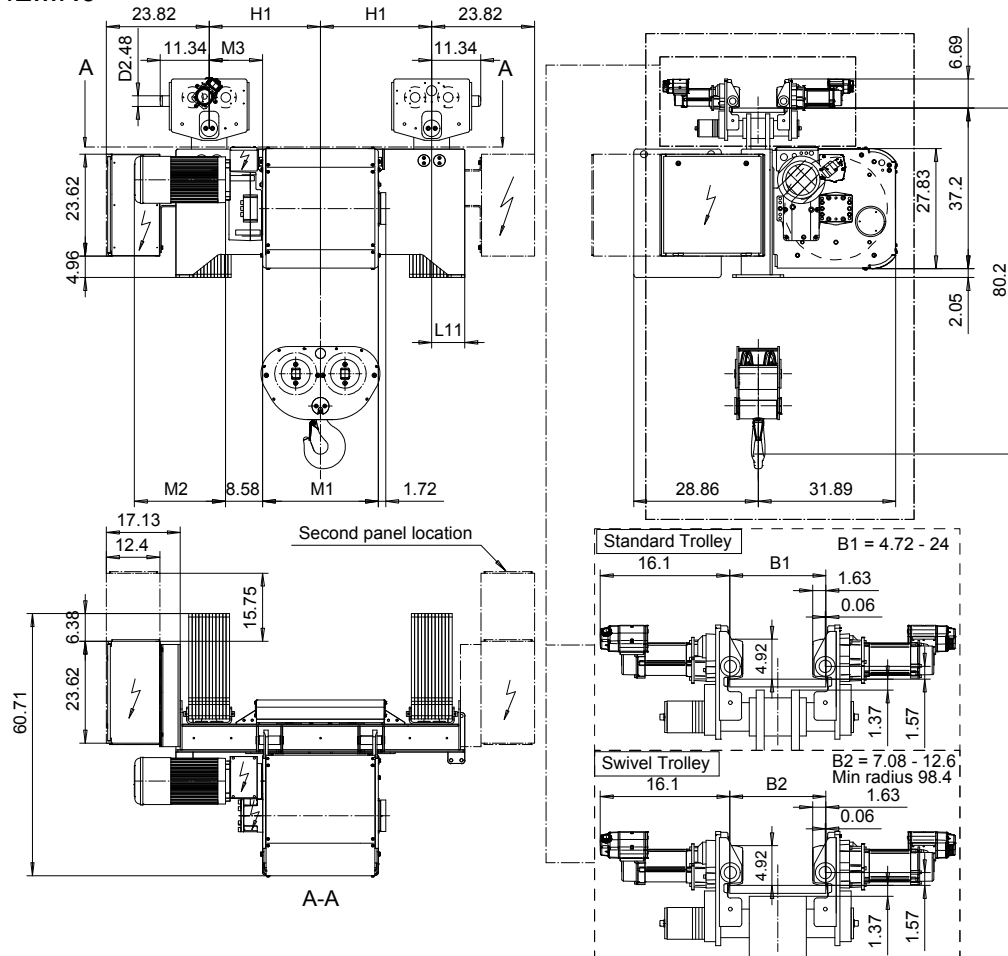


NORMAL HEADROOM, 4 PART DOUBLE

Hoist type:

US-60Hz

SX6 042...N0



HOL (ft)	Length code	M1 (inch)	M3 (inch)	H1 (inch)	L11 (inch)	Wgt - Std Trlly (lb)	Wgt - Swivel Trlly (lb)
26'-3"	E	26.85	12.36	25.79	7.68	4630	5071
36'-1"	F	32.75	9.41	25.79	7.68	4850	5291
47'-7"	G	40.23	5.67	25.79	7.68	5291	5732
64'-0"	H	50.07	12.56	37.6	7.68	5732	6393
85'-4"	J	63.85	9.41	37.6	7.68	6393	6834
103'-4"	K	75.66	-12.05	25.79	20.47	6834	7496
126'-4"	L	89.44	-18.94	25.79	20.47	7496	8157
141'-1"	M	99.29	-12.05	37.6	19.49	8157	9039
160'-9"	N	111.10	-18.94	37.6	19.49	8598	9480

Note: Weight when B = 12"

Motor	P6,T6,T7,T8,T9	P7,TA	P8
M2 (inch)	21.1	22.68	28

Load (TON)	Class ASME	Hoisting motor				
		Hoisting speed (ft/min): Gear code				
		16/2.4: E	20/3.1: F	25/3.9: G	30: H	40: J
12 1/2	H4+	P6,T6	P6,T6	P7,T7	T8	T9
15	H4	P6,T6	P6,T6	P7,T7	T8	T9
20	H4	P6,T6	P7,T7	P8,T8	T9	TA

Hoist Panel Dimensions WxD (inch) + Configuration for Monorail Hoists				
Trolley control type	2-spd or CMXC	CM Select 002	CM Select 003-004	CM Select 005-007
Panel size + 2nd panel size - 380-500V	39.37 x 23.62	39.37 x 23.62	39.37 x 23.62	39.37 x 23.62 + 39.37 x 23.62
Panel size + 2nd panel size - Other Voltages	39.37 x 23.62	39.37 x 23.62	39.37 x 23.62 + 23.62 x 15.75	39.37 x 23.62 + 39.37 x 23.62

CSDTLI Design 2010-11-30 Date	KHHMKH Chd Appd	Ref Drawing	QD-N-24
SLEODOCV Owner Dept	TROLLEY; NORMAL HEADROOM 2x4 ROPE FALLS		1 of 19 Folder
R&M MATERIALS HANDLING INC.		R&M MATERIALS HANDLING, INC HOIST & CRANE PRODUCTS SPRINGFIELD, OHIO	D006896-A Issue 11/2010

This document is the absolute property of R&M Materials Handling, Inc. This document must not be copied without the written permission of R&M Materials Handling, Inc. The contents thereof must not be disclosed to a third party nor be used for any unauthorized purpose. Contravention will be prosecuted.