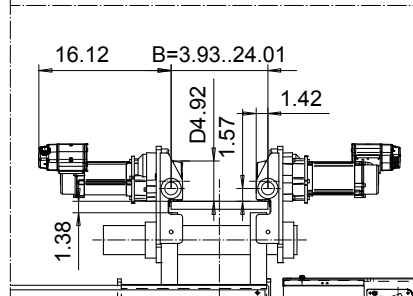
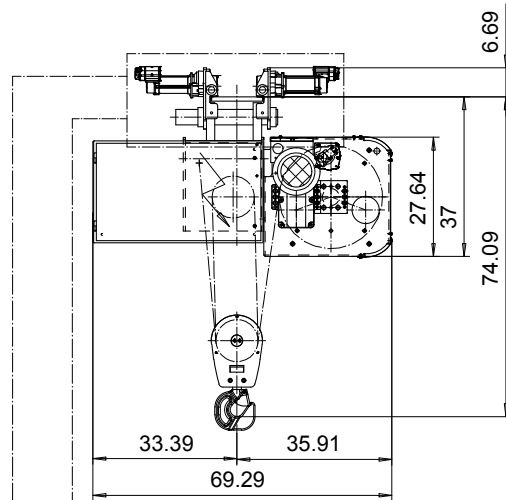
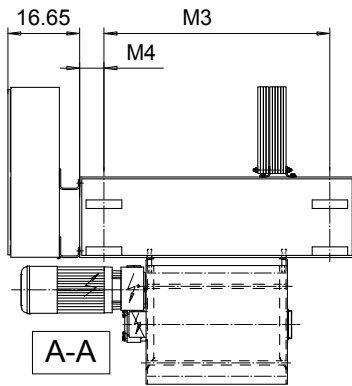
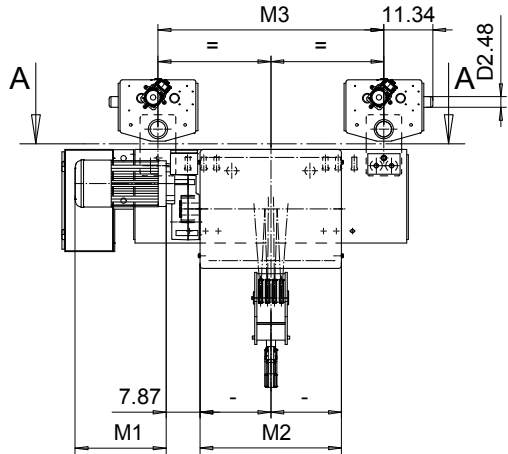
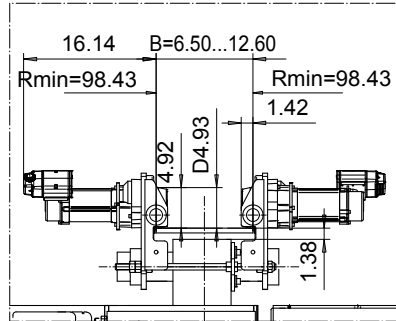


NORMAL HEADROOM, 4 PART DOUBLE
Hoist type:
SX6 042...N0

US-60Hz



OPTION: CURVED TRACK SUSPENSION



Motor	P6,T6,T7,T8,T9	P7,TA	P8
M1 (inch)	21.10	22.67	27.99

HOL (ft)	Length code	M2 (inch)	M3 (inch)	M4 (inch)	Weight (lb)
26'-3"	E	26.85	52.36	5.71	3300
36'-1"	F	32.75	52.36	5.71	3500
47'-7"	G	40.23	52.36	5.71	3700
64'-0"	H	50.07	75.98	5.71	4100
85'-4"	J	63.85	75.98	5.71	4600
103'-4"	K	75.66	52.36	20.87	5000
126'-4"	L	89.44	52.36	20.87	5700
141'-1"	M	99.29	52.36	31.69	6100
160'-9"	N	111.10	52.36	31.69	6600

Note: Weight when B = 12"

Load (TON)	Class ASME	Hoisting motor				
		Hoisting speed (ft/min): Gear code				
		16/2.4: E	20/3.1: F	25/3.9: G	30: H	40: J
12 1/2	H4+	P6,T6	P6,T6	P7,T7	T8	T9
15	H4	P6,T6	P6,T6	P7,T7	T8	T9
20	H4	P6,T6	P7,T7	P8,T8	T9	TA

CSDTLI Design 2003-04-14 Date	KHHMKKH Chd Appd	Ref Drawing	QD-N-24
SLEQDOCV Owner Dept	TROLLEY; NORMAL HEADROOM 2x4 ROPE FALLS		1 of 19 Folder
R&M R&M MATERIALS HANDLING, INC. HOIST & CRANE PRODUCTS GREENSBORO, NC	D002531-A		Issue 3

This document is the absolute property of R&M Materials Handling, Inc. This document must not be copied without the written permission of R&M Materials Handling, Inc. The contents thereof must not be disclosed to a third party nor be used for any unauthorized purpose. Contravention will be prosecuted.