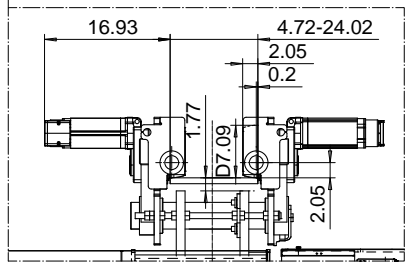
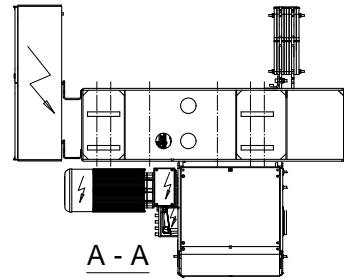
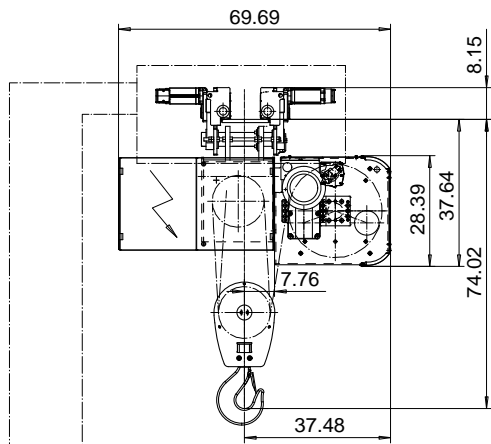
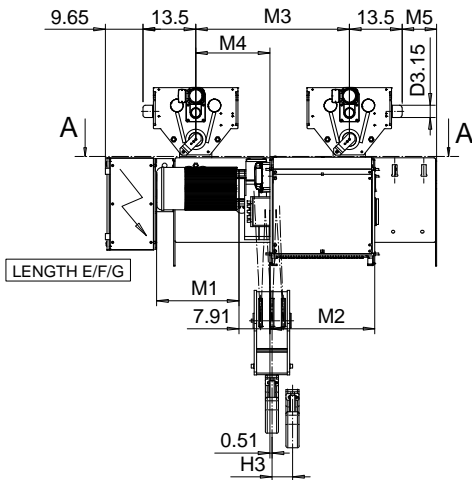


US-60Hz

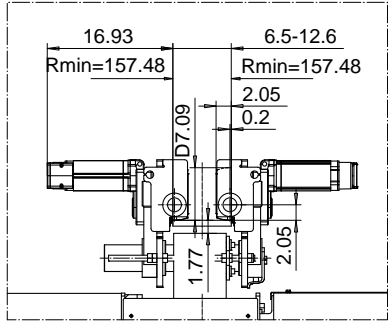
NORMAL HEADROOM, 6 PART SINGLE

Hoist type:

SX6 061...N0



OPTION: CURVED TRACK SUSPENSION



Motor	P6,T6,T7,T8,T9	P7,TA	P8
M1 (inch)	21.10	22.67	27.99

HOL (ft)	Length (inch)	M2 (inch)	M3 (inch)	M4 (inch)	M5 (inch)	H3 (inch)	Weight (lb)
16'- 4"	C	18.19	47.24	19.06	- 7.87	1.81	4350
22'-11"	D	22.13	47.24	19.06	- 7.87	2.48	4400
29'- 6"	E	26.85	39.37	19.06	8.86	3.30	4625
39'- 4"	F	32.76	39.37	19.06	8.86	4.21	4850
50'-10"	G	40.24	39.37	19.06	8.86	5.51	5175
65'- 7"	H	50.08	57.09	22.60	30.12	7.16	5850
86'-11"	J	63.86	57.09	22.60	30.12	9.44	6500
105'-0"	K	75.67	57.09	22.60	30.12	11.37	6950

Note: Weight when B = 12"

Load (TON)	Class ASME	Hoisting motor				
		Hoisting speed (ft/min): Gear code				
		10/1.5: E	12.5/1.9: F	16/2.4: G	20: H	25: J
20	H4+	P6,T6	P6,T6	P7,T7	T8	T9
25	H4	P6,T6	P6,T6	P7,T7	T8	T9
30	H3	P6,T6	P7,T7	P8,T8	T9	TA

This document is the absolute property of R&M Materials Handling, Inc. This document must not be copied without the written permission of R&M Materials Handling, Inc. The contents thereof must not be disclosed to a third party nor be used for any unauthorized purpose. Contravention will be prosecuted.

ETVPH Design	ETTPAL Cltd	Appd	Ref Drawing	QD-N-06
2003-09-09 Date	TROLLEY; NORMAL HEADROOM			1 of 19 Fol/Doc
SLEQDOCV Owner Dept	6 ROPE FALLS			Issue
R&M MATERIALS HANDLING, INC. SERIES 4 SHAW PROTECT SUSPENDED HOIST	D002711-A			2