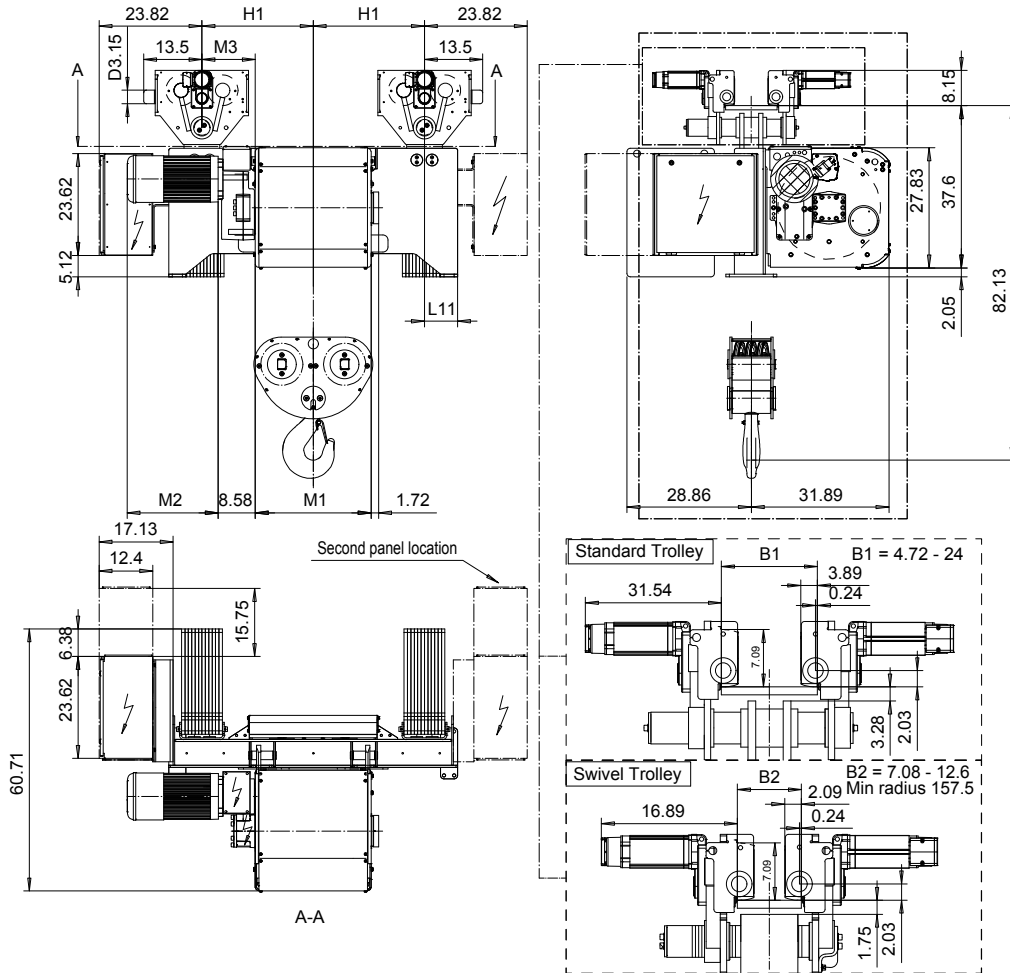


**NORMAL HEADROOM, 6 PART DOUBLE**  
**Hoist type:**  
**SX6 062...N0**

**US-60Hz**



HOL	Length	M1	M3	H1	L11	Wgt - Std Trolley	Wgt - Swivel Trolley
(ft)	code	(inch)	(inch)	(inch)	(inch)	(lb)	(lb)
18'-1"	E	26.85	12.36	25.79	7.68	5291	5732
23'-0"	F	32.75	9.41	25.79	7.68	5512	5952
31'-2"	G	40.23	5.67	25.79	7.68	5952	6393
42'-8"	H	50.07	12.56	37.6	7.68	6393	7055
55'-9"	J	63.85	5.67	37.6	7.68	7055	7496
68'-11"	K	75.66	-12.05	25.79	20.47	7496	8157
83'-8"	L	89.44	-18.94	25.79	20.47	8157	8818
93'-6"	M	99.29	-12.05	37.6	19.49	8818	9700
106'-8"	N	111.10	-17.95	37.6	19.49	9259	10362

Note: Weight when B = 12"

Load (TON)	Class ASME	Hoisting motor				
		Hoisting speed (ft/min): Gear code				
		10/1.5: E	12.5/1.9: F	16/2.4: G	20: H	25: J
20	H4+	P6,T6	P6,T6	P7,T7	T8	T9
25	H4	P6,T6	P6,T6	P7,T7	T8	T9
30	H3	P6,T6	P7,T7	P8,T8	T9	TA

Motor	P6,T6,T7,T8,T9	P7,TA	P8
M2 (inch)	21.1	22.68	28

Hoist Panel Dimensions WxD (inch) + Configuration for Monorail Hoists				
Trolley control type	2-spd or CMXC	CM Select 002	CM Select 003-004	CM Select 005-007
Panel size + 2nd panel size - 380-500V	39.37 x 23.62	39.37 x 23.62	39.37 x 23.62	39.37 x 23.62 + 39.37 x 23.62
Panel size + 2nd panel size - Other Voltages	39.37 x 23.62	39.37 x 23.62	39.37 x 23.62 + 23.62 x 15.75	39.37 x 23.62 + 39.37 x 23.62

This document is the absolute property of R&M Materials Handling, Inc. This document must not be copied without the written permission of R&M Materials Handling, Inc. The contents thereof must not be disclosed to a third party nor be used for any unauthorized purpose. Contravention will be prosecuted.

CSDTLI Design 20103-11-30 Date	KHHMKH Chd Appd	Ref Drawing	QD-N-26
SLEODOCV Owner Dept	TROLLEY; NORMAL HEADROOM 2x6 ROPE FALLS		1 of 19 Folder
R&M MATERIALS HANDLING INC.	R&M MATERIALS HANDLING, INC HOIST & CRANE PRODUCTS SPRINGFIELD, OHIO	D006897-A	Issue 11/2010