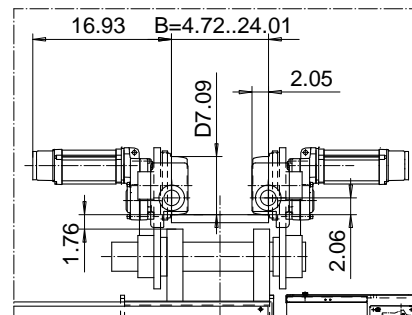
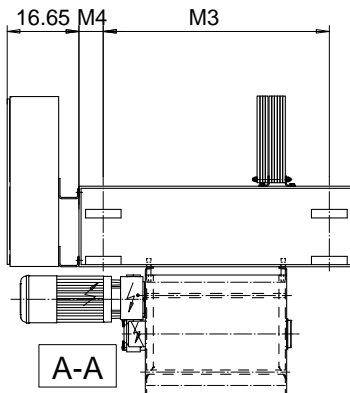
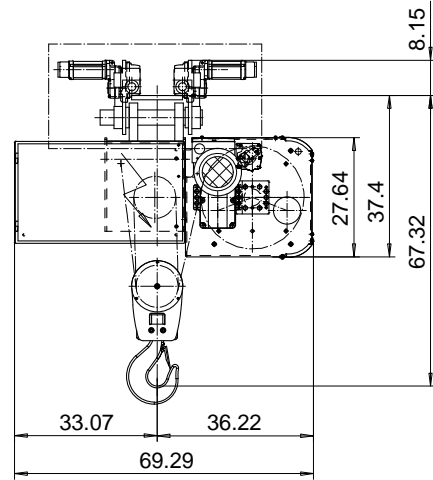
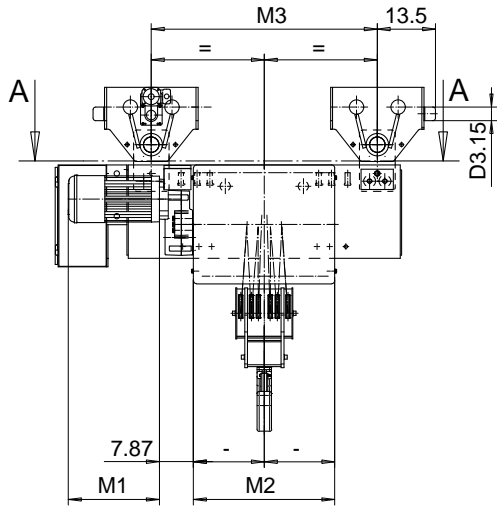
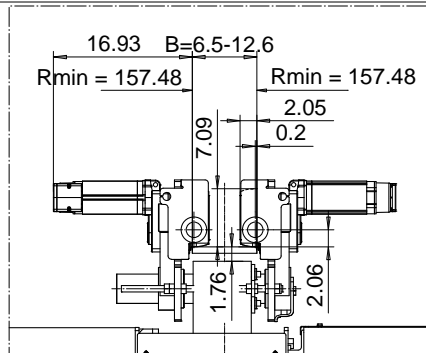


NORMAL HEADROOM, 6 PART DOUBLE
Hoist type:
SX6 062...N0

US-60Hz



OPTION: CURVED TRACK SUSPENSION



Motor	P6,T6,T7,T8,T9	P7,TA	P8
M1 (inch)	21.10	22.67	27.99

HOL (ft)	Length code	M2 (inch)	M3 (inch)	M4 (inch)	Weight (lb)
18'-1"	E	26.85	52.36	5.71	3700
23'-0"	F	32.75	52.36	5.71	3900
31'-2"	G	40.23	52.36	5.71	4100
42'-8"	H	50.07	75.98	5.71	4500
55'-9"	J	63.85	75.98	5.71	5000
68'-11"	K	75.66	52.36	20.87	5400
83'-8"	L	89.44	52.36	20.87	6100
93'-6"	M	99.29	52.36	31.69	6500
106'-8"	N	111.10	52.36	31.69	7000

Note: Weight when B = 12"

Load (TON)	Class ASME	Hoisting motor				
		Hoisting speed (ft/min): Gear code				
		10/1.5: E	12.5/1.9: F	16/2.4: G	20: H	25: J
20	H4+	P6,T6	P6,T6	P7,T7	T8	T9
25	H4	P6,T6	P6,T6	P7,T7	T8	T9
30	H3	P6,T6	P7,T7	P8,T8	T9	TA

This document is the absolute property of R&M Materials Handling, Inc. This document must not be copied without the written permission of R&M Materials Handling, Inc. The contents thereof must not be disclosed to a third party nor be used for any unauthorized purpose. Contravention will be prosecuted.

CSDTLI Design 2003-04-15 Date	KHHMKH Chd Appd	Ref Drawing	QD-N-26
SLEQDOCV Owner Dept	TROLLEY; NORMAL HEADROOM 2x6 ROPE FALLS		1 of 19 Folder
R&M MATERIALS HANDLING, INC. SHEET & GEAR PRODUCTS SHELDONVILLE, OHIO	D002536-A		Issue 3