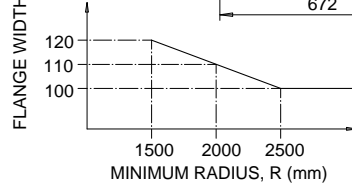
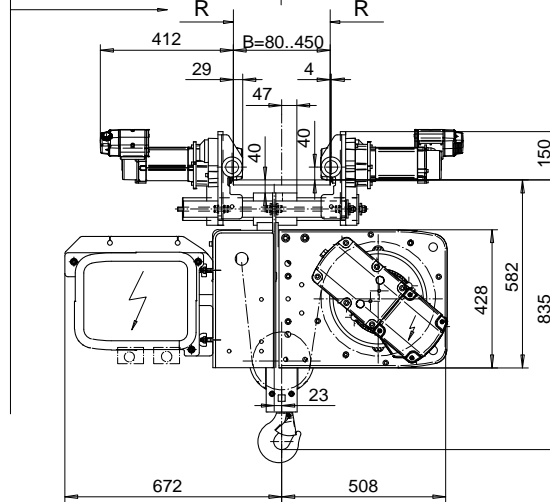
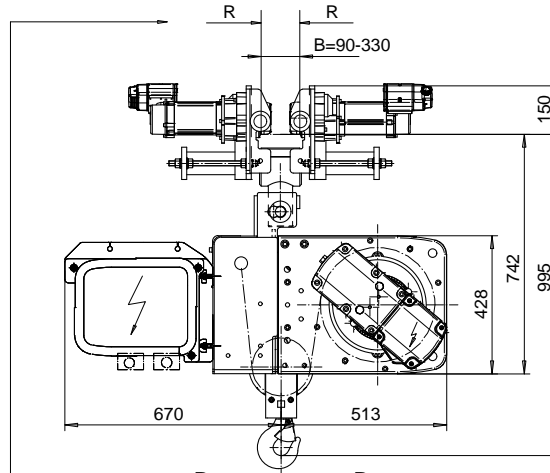
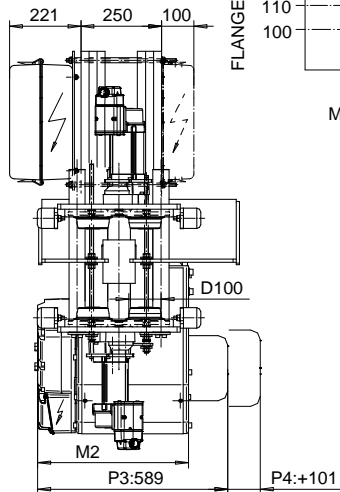
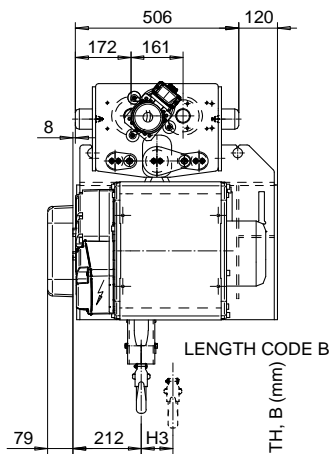
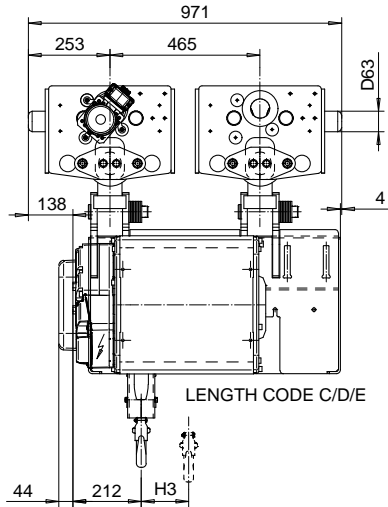


**NORMAL HEADROOM, CURVED TRACK; 2 PART SINGLE**  
**Hoist type:**  
**SX4021...N0**

SI-50Hz



Load (kg)	Class Fem/ISO	Hoisting speed (m/min)		
		Gear+Motor code:		
		E+P3	F+P3	H+P4
1600	3m/M6	8/1.3	10/1.7	16/2.7
2000	3m/M6	8/1.3	10/1.7	16/2.7
2500	2m/M5	8/1.3	10/1.7	16/2.7
+ weight (kg):		-	-	40

HOL (m)	Length code	M2 (mm)	H3 (mm)	Weight (kg)
12	B	467	98	380
18	C	567	147	500
24	D	667	198	540
30	E	787	258	550

This document is the absolute property of R&M Materials Handling, Inc. This document must not be copied without the written permission of R&M Materials Handling, Inc. The contents thereof must not be disclosed to a third party nor be used for any unauthorized purpose. Contravention will be prosecuted.

ETTVPH Design 2004-12-23 Date	ETTVPH Chd Appd	Ref Drawing	QB-N-02
SLEQDOCV Owner Dept	TROLLEY; NORMAL HEADROOM CURVED TRACK; 2 ROPE FALLS		1:10 Folder
R&M MATERIALS HANDLING, INC. 8001 S. GARDEN GROVE SARASOTA, FL 34238	D003840-A		Issue 1